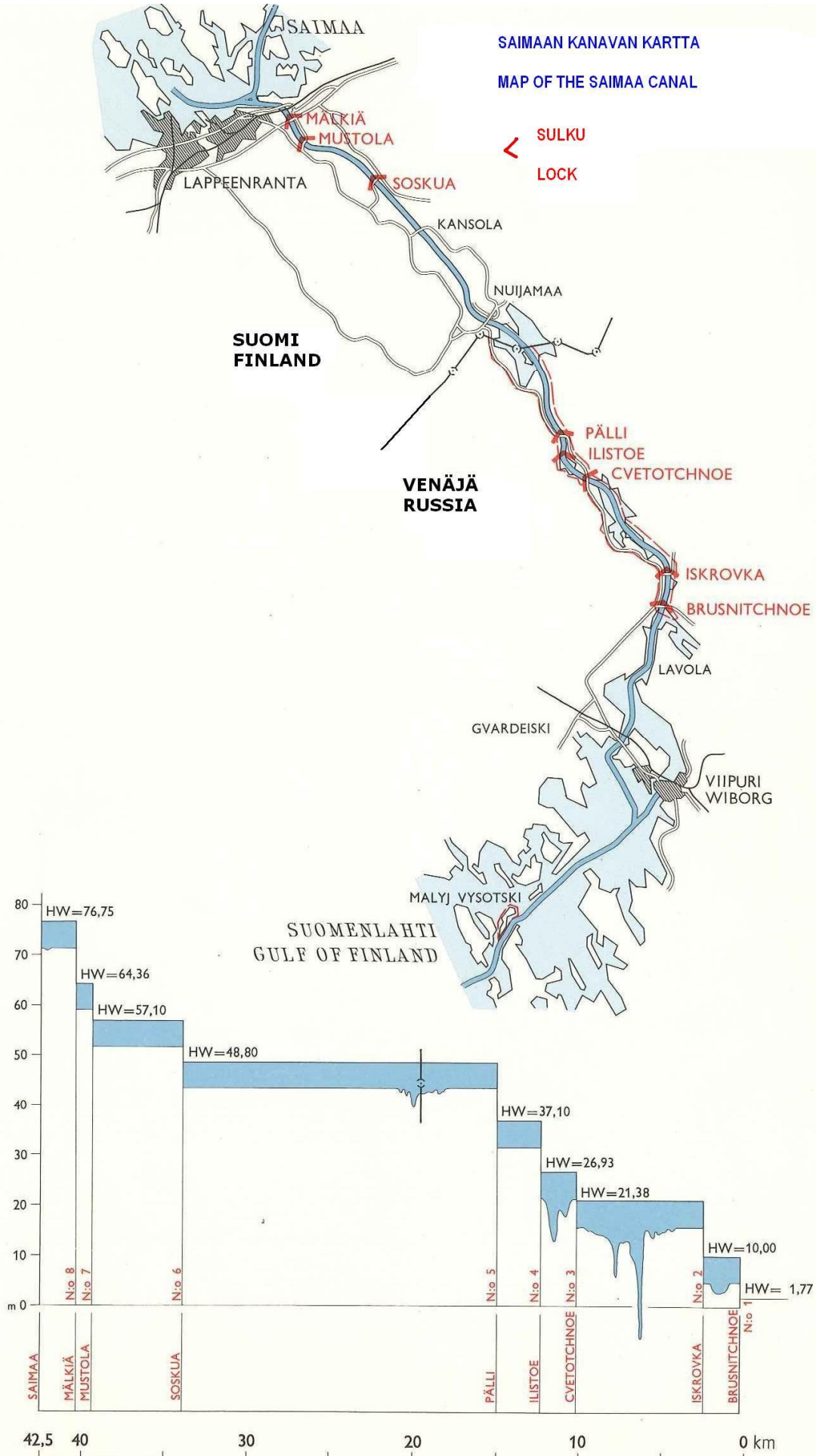


SAIMAA CANAL GUIDE  
FOR LEISURE BOATS  
2016

**SAIMAAN KANAVAN KARTTA**  
**MAP OF THE SAIMAA CANAL**



## LIST OF CONTENTS

1	LEISURE BOATS.....	4
2	EXTENT OF TRAFFIC ALLOWED.....	4
3	REQUIREMENTS SET FOR THE BOAT AND MASTER .....	4
4	PASSENGER DOCUMENTS ON A TRANSIT VOYAGE .....	5
5	CALLING AT VYBORG.....	5
6	MEASURES WITH THE FINNISH AUTHORITIES .....	6
7	MEASURES WITH THE RUSSIAN AUTHORITIES .....	6
8	ORDERING A PILOT ON A TRANSIT JOURNEY .....	8
9	MEASURES WITH THE SAIMAA CANAL AUTHORITIES .....	8
10	MAPS, CHARTS AND FAIRWAYS.....	8
11	RULES AND REGULATIONS TO KNOW.....	9
12	SAFETY INSTRUCTIONS FOR THE CANAL .....	11
13	NAVIGATION FEES .....	11
14	GENERAL INSTRUCTIONS.....	11
	MAP OF THE BORDER CROSSING POINT AT NUIJAMAA.....	14
	MAP OF THE BORDER CROSSING POINT AT SANTIO ISLAND.....	15
	MAP OF THE BORDER CROSSING POINT AT HAAPASAARI ISLAND.....	16
	VHF CALLS TO LOCKS, POSITION OF BOLLARDS, AND PHONE NUMBERS.....	17
	CONTACT DETAILS.....	18
	LEISURE BOAT EQUIPMENT REQUIRED AT THE SAIMAA CANAL AND VYBORG.....	20
	RULE concerning pilot-free navigation of small leisure boats in the Bay of Vyborg.....	21
	INSTRUCTION to captains of foreign small size vessels bounding for the Russian Federation (in the waters of the Vyborg Bay and the Gulf of Finland and Saimaa Canal).....	22

# Instructions for leisure boats through the Saimaa Canal

## 1 Leisure boats

Leisure boats (sports boats) refer to sail boats, motor boats and motor-sailing boats used for other purposes than gainful employment.

## 2 Extent of traffic allowed

Leisure boating from the Gulf of Finland to Lake Saimaa through the Saimaa Canal and vice versa is allowed for leisure boats of all countries. They may also call at Vyborg. The channels to be used are the south-western channel running south of Someri (the open-sea channel) or the coastal channel past Santio island.

## 3 Requirements set for the boat and master

The boat must be seaworthy and it must carry lifesaving appliances for everyone on board. If the legislation of the flag country so requires, the boat must also be registered and have a seaworthiness certificate issued by the authorities of the country in question or by Finnish authorities.

All leisure boats must display the lights and shapes required by the relevant international regulations (see p. 20, Leisure-boat equipment required at the Saimaa Canal and the Bay of Vyborg).

Boats registered in Finland must display the boat's registration number on its both sides in accordance with section 7 of the Government decree on watercraft register (641/2007), available in Finnish at <http://www.finlex.fi/fi/laki/alkup/2007/20070641/>. In other cases, if the flag country of a boat so requires, both sides of the boat must display the registration number so that it is easy to see. However a minimum requirement in all cases is that the sides of a boat must display an easily detectable name or other identifier if the boat in question does not have a registration number.

At the Bay of Vyborg, leisure boats with a hull length not more than 24 metres may sail without a pilot, provided that there is a VHF radio telephone on board and the master of the boat or a member of the crew has English or Russian language skills.

The master of the boat must be in possession of a document in English certifying his/her ownership of the boat and/or right to navigate it.

The master of a pleasure boat must have sufficient experience in navigating his/her boat at sea.

#### 4 Passenger documents on a transit voyage

ATTENTION! FOLLOW THE INSTRUCTION OF THE RUSSIAN FEDERATION AUTHORITIES ON THE PAGES 22-23.

Transit through the Saimaa Canal requires that the master of a boat fills in the following documents:

1. Travel documents (passport)
2. Crew list in five (5) copies/direction
3. Copy of the vessel holder's passport to the Russian Border Guard and the Russian Customs
4. Leisure boat inspection note to the Finnish Customs
5. Registration documents of a small-size vessel
6. Copy of the registration document of a small-size vessel to the Russian Customs
7. Passenger customs declaration form to the Russian Customs filled in by the master of the boat. Passenger customs declaration forms filled in by the crew members and passengers (if required by customs legislation in force)

'Crew list' form

Before the voyage, the boat's master must fill in the 'Crew list' form, which includes a list of passengers. The master must reserve 5 copies of the form for navigation through the Saimaa Canal. The form has been approved by the Finnish and Russian border authorities. It must be filled in carefully, paying particular attention to the passenger list and the identification and contact information of the boat.

The boat's master is to submit copies of the form to Finnish and Russian border authorities. The border authorities stamp the pieces on board the boat, and these must be kept for upcoming border inspections.

Leisure boat inspection note to the Finnish Customs

The authority carrying out the departure inspection verifies the form, filled in by the master, at Haapasaari, Santio or Nuijamaa. The form must be kept on board for the duration of the voyage, and handed in to the Finnish official carrying out the entry inspection at the end of the voyage.

Forms are available at the place of inspection from the authority in charge.

#### 5 Calling at Vyborg

ATTENTION! FOLLOW THE INSTRUCTION OF THE RUSSIAN FEDERATION AUTHORITIES ON THE PAGES 22-23.

It is possible to call at Vyborg Port either on a transit journey from the Gulf of Finland to Lake Saimaa or vice versa or to sail only to the city of Vyborg and back. Everyone (with the exception of Russian citizens) calling at Vyborg Port on a leisure boat must have a valid passport and visa. All the rules applying to transit voyages, such as the 'Vessel's report' form, leisure boat inspection note, registration document and certificate of ownership or right to use and the passenger customs clearance, also apply to calling at Vyborg Port.

Instructions under paragraph 7 must be followed in transit, and the captain must fill in a "CAPTAIN'S REPORT" form.

When coming from the sea to Vyborg and going back to the sea, the provisions on transit voyages are not applicable with the exception of the provisions concerning passports, visas and pilot orders.

## 6 Measures with the Finnish authorities

### Border inspection and customs control at Santio and Haapasaari

When coming from the sea, the inspections are carried out at Santio border crossing point for boats using the coastal fairway, and at Haapasaari coast guard station for boats using the fairway past Haapasaari island. When arriving at Santio or Haapasaari, the boat must follow the official navigational fairways, or the so-called custom fairway. The master of the boat must report to the border crossing point one hour before arrival. To Santio reports are made by VHF radio telephone (call channel 68) or by telephone +358 295 426 110, and to Haapasaari by VHF radio telephone (call channel 68) or by telephone +358 295 426 130. At the inspection, the master of a boat hands in the 'Vessel's report' form and makes a leisure boat inspection notification to the Customs.

### Border inspection and customs control at Nuijamaa

All leisure boating through the Saimaa Canal is regarded as traffic across the EU's external borders in respect of border inspections. Finnish entry/exit checks on leisure boats arriving at Lake Saimaa from the sea through the canal or leaving Lake Saimaa are carried out at the customs quay in Nuijamaa. At the inspection, passports must be presented to the officials together with visas, if necessary (when going to Russia). Completed 'Vessel's report' forms must also be presented, and when entering the country, a leisure boat inspection note received at the point of departure and verified by the officials.

## 7 Measures with the Russian customs and border control authorities

Border checks on leisure boaters take place at the Pälli Lock and customs clearance and control at the Brusnisnoje Lock. Border control officers in Pälli work 24 hours a day. Customs officers work at the Brusnitsnoje Lock 24 hours a day.

### Documents required at the Russian border check (Pälli Lock)

When entering the Russian Federation, leaving the Russian Federation and on a transit journey, the following documents must be presented to the Russian border authorities:

1. Crew list
2. Documents authorising the crossing of a state border
3. A copy of the vessel holder's passport
4. A copy of the boat's registration document

A valid visa and passport are required to call a Russian port.

### Documents required at the Russian customs check when arriving in Russia (Brusnitsnoje Lock)

1. Crew list (Vessel report)
2. A copy of the vessel holder's passport
3. Registration document of the boat or its certified copy.

A copy of registration certificate is left with the customs officials.

4. Vehicle customs clearance in two copies.

(In accordance with the Eurasian Customs Union resolution No 422 of 14 October 2010 "Instructions for filling a vehicle customs clearance form")

5. Passenger customs clearance in two copies filled by everyone aboard with personal items that must be cleared through the customs.

A list of personal items that have to be declared is at the end of the instructions on page 24.

(In accordance with a Eurasian Customs Union resolution No 287 of 18 June 2010 "Procedure of Filling in the Passenger Customs Declaration").

Vehicle and passenger customs declaration forms are available from customs officials at the Brusnitsnoje Lock.

### Documents required at the Russian customs check when leaving Russia (Brusnitsnoje Lock):

1. Crew list (Vessel report)
2. A copy of the vessel holder's passport
3. A registration document of the boat or its certified copy.

A copy of the registration certificate is left with the customs officials.

4. A vehicle customs declaration that was filled by the master of the boat in customs clearance when arriving in the Russian Federation.
5. Passenger customs declaration filled by everyone aboard with personal items that must be cleared through the customs.

## 8 Ordering a pilot on a transit journey

### Pilotage in Russia

Leisure boats with a hull length not more than 24 metres may sail without a pilot, provided that there is a VHF radio telephone on board and the master of the boat or a member of the crew has English or Russian language skills to take care of communications. A boater may choose to use a pilot in the Bay of Vyborg even if the conditions for pilot-free navigation are met.

Pilotage in the Russian territory is arranged only during the light hours, from 8.00 until 20.00 Moscow time. Pilot orders should be made on weekdays by phone or fax, +7813 783 2294. The order must contain the name of the boat, its length, speed and draught, along with the time of arrival at the boarding place and the name of the person ordering the service. Information given should be as precise as possible, because otherwise you may end up having to wait for the Russian pilot. Orders must be made in English or Russian.

### Pilotage in Finland

In the Finnish part of the Canal, boaters must also make their own pilot orders. Leisure boats exceeding 35 metres in length must have a pilot on board in the Saimaa Canal.

Pilot orders may be submitted to Finnpilot Pilotage Ltd,  
tel. +358 40 487 3133, fax +358 29 525 3011 or  
email [pilotorder.east\(at\)finnpilot.fi](mailto:pilotorder.east@finnpilot.fi).

The communications facilities of border or coastguard stations cannot be used for making pilot orders.

## 9 Measures with the Saimaa Canal authorities

Boaters are not required to visit or call at Saimaa VTS when reaching Mälkiä Lock.

## 10 Maps, charts and fairways

The fairways leading to the Canal from the sea are marked on Chart Folio A (Vyborg-Helsinki) and the fairways leading from Vyborg to the Canal on Lake

Chart Folio S (Saimaa Canal). Charts are for sale at John Nurminen Marine Oy, Karttakeskus and their sales agents, including certain book shops.

The length of the route from Kotka to Brusnitsnoje, for example, is 162 km along the south-western channel and 144 km along the coastal channel. The length of the Saimaa Canal from Brusnitsnoje to Lake Saimaa is 43 km.

## 11 Rules and regulations to know

Traffic in the Canal is governed by the decree on the traffic rules for canals and movable bridges.

<http://www.finlex.fi/fi/laki/ajantasa/1991/19910512>

<http://www.liikennevirasto.fi/vesivaylat/kanavat/>

The following points should be noted in particular:

Maximum speeds allowed

Ships with a breadth of 11.8 metres or more may sail at a maximum speed of 9 km/h in the Saimaa Canal and 12 km/h in the Canal lakes.

Depending on the draught, the maximum speeds allowed in the Saimaa Canal for cargo ships, passenger or leisure boats and tugboats no more than 11.8 metres are as follows:

draught	maximum speed allowed
more than 3.9 m	9 km/h
3.9 - 3.0 m	12 km/h
less than 3.0 m	15 km/h

Depending on the draught, the maximum speeds allowed in the Canal lakes for ships with a breadth not exceeding 11.8 metres are as follows:

draught	maximum speed allowed
3.0 m or more	15 km/h
less than 3.0 m	18 km/h

No ship may navigate in the canals at such a high speed that the wave it generates could reach the road alongside the Canal or damage the canal structures.

Yield way to an oncoming vessel by moving to the right.

Overtake a vessel from the left and remember not to cause any danger to other traffic.

Unauthorised crossing of the borders of the leased area is forbidden.

Remember to stay in the marked channels on Lake Nuijamaanjärvi and in the Russian section of the Canal as well as in the territorial waters of Russia.

No disembarkation is allowed in the above sections.

If several boats arrive in the Saimaa Canal at the same time, the boats should remain as a group in the Canal so that more than one leisure boat can be locked at the same time.

While navigating in the Canal, please remember that cargo and passenger ships are not able to manoeuvre quickly, which means that small boats have to stay out the centre of the Canal while near them.

At the locks, small boats sometimes have to wait for their turn because of cargo and passenger traffic. When choosing a mooring place, you must follow the instructions of the personnel at the locks. If have to act on your own, remember not to cause any harm or danger to other traffic.

While in the Canal, you may spend the night at the following places:

In the leased area of the Saimaa Canal, at the upper waiting harbour of Brusnitsnoje Lock on the same side as the pilot station, only when going to the sea.

Disembarkation is strictly prohibited!

In the area of the leisure boat customs quay at Nuijamaa,

Behind the upper waiting harbour west of Soskua Lock (NB: there may be propeller currents),

On the upper side of Mustola Lock, at the 'kiosk' shore, or behind the lower waiting harbour east of the lock.

If you spend the night in the Canal, you must inform of your plan and of when you will continue your voyage to the Saimaa Canal remote control centre at Mälkiä or Brusnitchnoe Lock (phone numbers on page 19).

To ensure smooth traffic, please comply with the instructions of the Canal authorities and with "good seamanship" at all times.

While your boat is in the border zone, photography is strictly prohibited. Cameras must be kept below the deck in their cases.

Photography of military installations is also prohibited.

## 12 Safety instructions for the Canal

If you have a VHF radio telephone on board, please keep it turned to channel 11 at all times.

When arriving in the Canal from Lake Saimaa, please contact the Mälkiä Lock in advance and ask for permission to enter the Canal, tel. +358 295 34 4157.

**ABSOLUTELY NO MOORING TO THE FIXED BOLLARDS ON THE LOCK WALLS!**

Absolutely no mooring or waiting is allowed in the following dangerous points in the waiting harbours of the locks:

The upper and lower waiting harbours east of Iskrovka Lock (mooring and waiting on the western side), the lower waiting harbour on the eastern side of Cvetotsnoje Lock (mooring allowed only behind the quay), the lower waiting harbour east of Pälli Lock (mooring or waiting on the western side).

Avoid meeting cargo and passenger ships in the open canal south-east of Lake Bolchoe Cvetotsnoje.

## 13 Navigation fees

Transit traffic

Fees are not collected from leisure boats in the Saimaa Canal.

Fees charged by Russia

Boaters must check pilotage fees themselves when making a pilot order.

## 14 General instructions

Before embarking on your voyage, please make sure that your boat and documents are in order. The master of a boat is responsible for his/her boat, its crew, seaworthiness and sufficiency of fuel. The last place to get more fuel is Klamila when coming from the sea and Lappeenranta when coming from Lake Saimaa.

Under normal circumstances, passage through the Canal in the section with locks takes about 6-8 hours from Brusnitsnoje Lock to Lake Saimaa.

Since the Russian guard vessels and pilot stations use the International Code of Signals, it is advisable to learn at least the one-letter code before the trip.

While in the territory of Russia or in the Canal, all the instructions and orders given by the Russian or Finnish authorities must be complied with.

If a Russian guard vessel calls the boat by VHF radio telephone, the call must be answered. Guard vessels test, for example, that the boat has a VHF radio telephone if it is navigating without a pilot.

In the territorial waters of Russia near Santio, a Russian guard vessel often keeps watch anchored to a buoy. When approaching or leaving Santio, leisure boats are requested to navigate close to the Russian guard vessel and to slow down so that the identification signs of the boat can be seen. Signals given by a guard vessel must be observed at all times.

The Russian border officials have, if needed, the right to check that the documents of a boat and its crew are in order.

It is advisable that no contact is made with other boats navigating in the Canal and trying to sell something. In such a case, you should continue your voyage as usual. However, if there are any incidents during your voyage, please report them immediately to the Canal Delegate's Office so that we can do our best to eliminate the inconvenience.

Animals on board:

Please FIND OUT well in advance of your trip what vaccination orders apply to animals. Nuijamaa Customs tel. +358 295 527 023.

<https://www.evira.fi/en/animals/import-and-export/>

If boating takes place only in the Finnish part of the Saimaa Canal between Lake Saimaa and Lake Nuijamaanjärvi, no authorisations are needed, nor need any fees to be paid. The instructions of sections 9 and 11 of this manual, however, apply as appropriate. It should also be noted that most parts of Lake Nuijamaanjärvi belong to the border zone, and access to these areas is subject to special permits and authorisations. When crossing the national border in normal order, a border zone permit is not required in addition to the above documents.

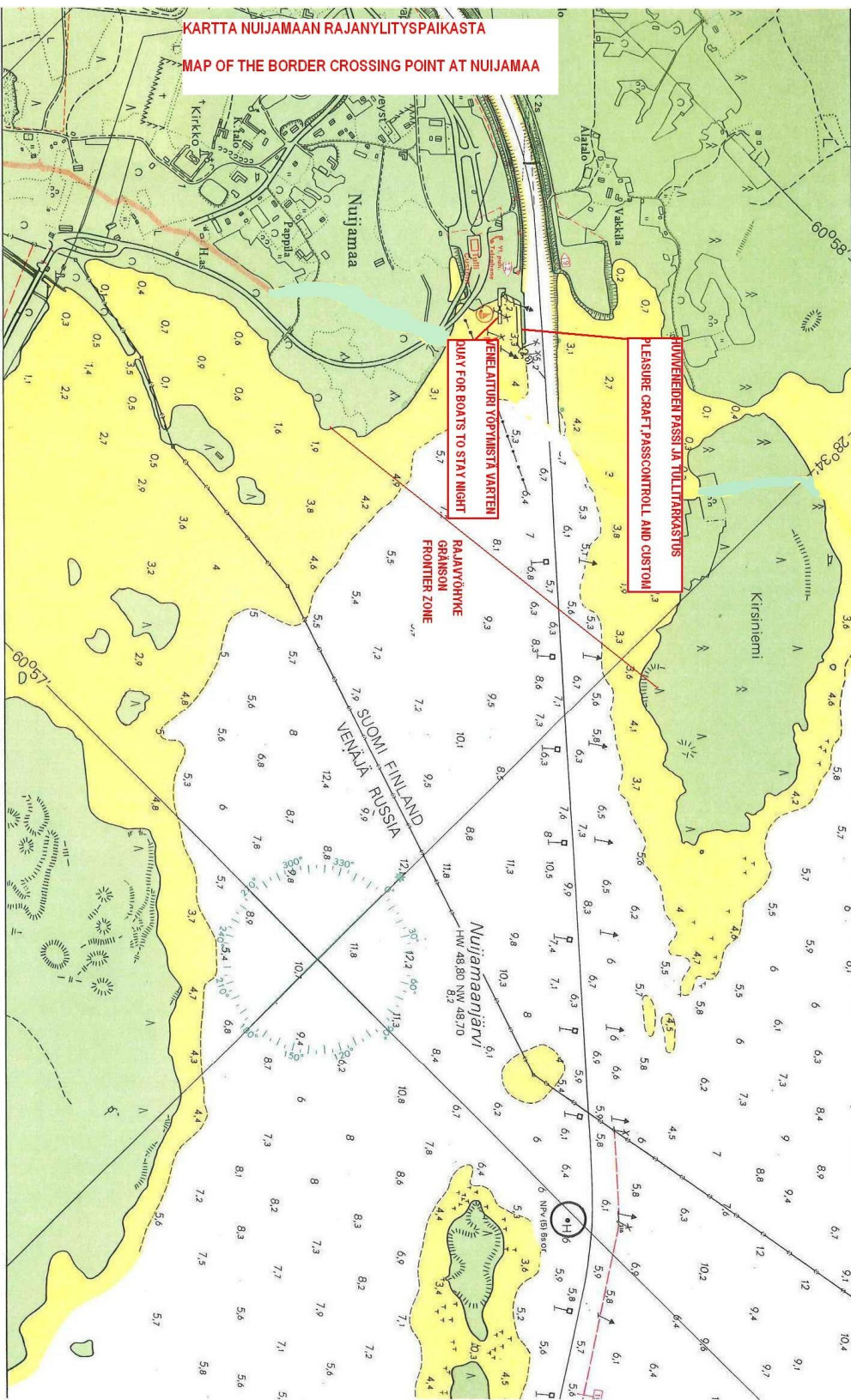
At Lake Nuijamaanjärvi and the Canal section connected to it, border control authorities supervise that no unauthorised border-crossing or other incidents contrary to the frontier régime agreement between Finland and Russia take place. In this purpose, they may carry out checks on the documents of boats and their crew.

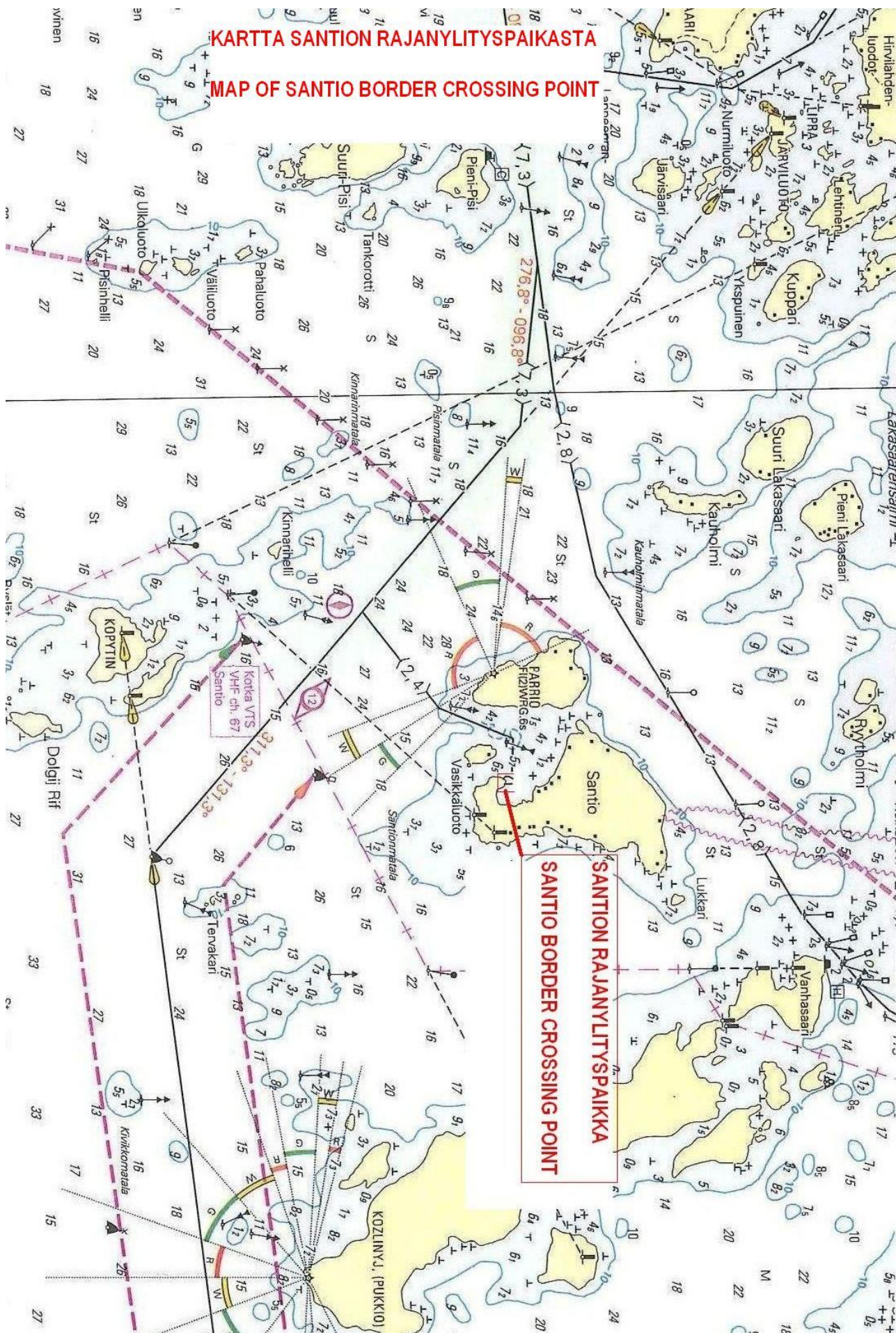
If the voyage has already begun and delays occur during it (such as an engine failure), the authorities must be notified of this in order to avoid unnecessary searches and enquiries. You may inform e.g. the coastguard or

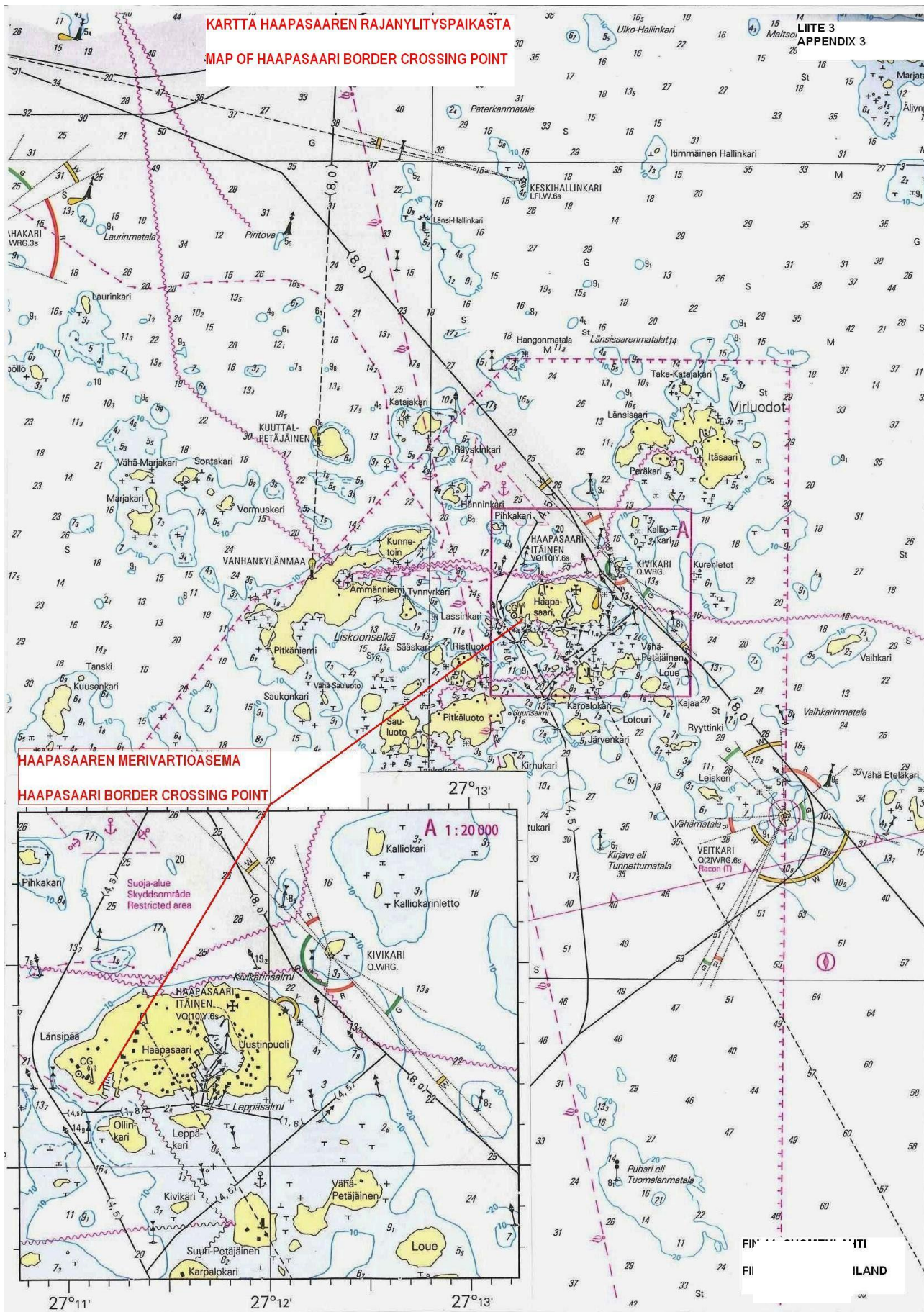
Saimaa VTS, and they will forward the notification. If necessary, you can ask the Russian authorities to forward your notification to the Finnish authorities.

Ministry of Transport and  
Communications

Saimaa Canal Delegate's Office







## VHF CALLS TO LOCKS, POSITION OF FLOATING BOLLARDS, AND PHONE NUMBERS

VHF call	position of bollard		telephone
BRUSNITSNOJE	east	(E)	+358(0) 295 34 4159
ISKROVKA	east	(E)	+358(0) 295 34 4157
CVETOTSNOJE	west	(W)	+358(0) 295 34 4157
ILISTOE	east	(E)	+358(0) 295 34 4157
PÄLLI	west	(W)	+358(0) 295 34 4157
SOSKUA	west	(W)	+358(0) 295 34 4157
MUSTOLA	west	(W)	+358(0) 295 34 4157
MÄLKIÄ	east	(E)	+358(0) 295 34 4157

Locks are controlled by the Saimaa Canal remote control centre, which is situated at Mälkiä Lock, or by the operating centre at Brusnitsnoje Lock.

The Saimaa Canal remote control centre can operate all eight locks and seven movable bridges along the Canal. The Brusnitsnoje operating centre operates the Canal's first three locks and movable bridges from the sea.

### **How to moor during lockage**

Use large-enough fenders (at least 4).

#### Mooring when going upstream

##### Direction

*Use a straight rope to moor tightly to a floating bollard on the lock wall. Mooring from the boat's middle. If no other boats arrive at the lock, moor to the first floating bollard from the lower gate.*

#### Mooring when going downstream

##### Direction

*Loop to be tied from the aft of the boat. Moor to the floating bollard closest to the lower gate, if there are no other boats in the lock.*

## USEFULL CONTACT DETAILS

Saimaa Canal Delegate's Office Itäinen kanavatie 2 FI-53420 LAPPEENRANTA	tel. +358 5 458 5170 fax +358 5 436 8068 saimaankanava@lvm.fi
Saimaa Canal remote control centre Mälkiä Lock	tel. +358 295 34 4157 +358 295 34 4158
Vessel Traffic Service Saimaa VTS	tel. +358 20 637 3745
Consulate of the Russian Federation Tehtaankatu 1D FI-00140 HELSINKI	tel. +358 9 612 3025
Consulate of the Russian Federation Kievarinkatu 1A FI-53100 LAPPEENRANTA	tel. +358 5 872 0700 fax +358 5 872 0777
Santio border crossing point	tel. +358 295 426 110 Marine VHF radio: channel 16 and 68 call: Santio passport control
Haapasaari coast guard station	tel. +358 295 426 130 Marine VHF radio: channel 16 and 68
Nuijamaa border control station Nuijamaantie 1760 FI-54230 NUIJAMAA	tel. +358 295 422 500 fax +358 295 411 517
John Nurminen Marine Oy (charts and maps) Heikkiläntie 8 FI-00210 Helsinki	Customer service: tel. +358 9 682 3180 marine@johnnurminen.com www.johnnurminenmarine.com Webshop: www.merikartat.fi
Nordic Morning Oyj publication subscriptions Kuninkaantammenkierto 3 / Hakuninmaantie 2 FI-00043 NORDIC MORNING	tel. +358 20 450 00 fax +358 20 450 2437 tiedotus@nordicmorning.com www.nordicmorning.com

Karttakeskus Oy  
Atomitie 2  
FI-00370 HELSINKI

puh. +358 20 577 7580  
myynti@karttakeskus.fi  
www.karttakeskus.fi  
Webshop: www.karttakauppa.fi

Savonlinna Travel Ltd  
Kauppatori 2  
FI-57130 SAVONLINNA

tel. +358 600 30007  
sales@savonlinnatravel.com  
www.savonlinna.travel

## LEISURE BOAT EQUIPMENT REQUIRED AT THE SAIMAA CANAL AND THE BAY OF VYBORG

- Navigation lights
- Anchor light
- Anchor and cable
- Drift anchor
- Mooring ropes
- Towing rope
- Fenders
- Steering wheel and spare steering device (no steering wheel required in sailing boats)
- Oars or paddle
- Boat hook
- Hand pump
- Bucket or bailer
- Signal horn
- Fire extinguisher (a manual extinguisher complying at least with class B II C)
- Life jackets for everyone on board
- Life buoy
- Lifeline (floating)
- Distress flares
- Hand-held lamp
- First-aid kit
- Compass
- Navigation charts
- Stern flag
- Decree (538/77) on rules for the prevention of collision at sea

<http://www.finlex.fi/fi/sopimukset/sopsteksti/1977/19770030>

The life jackets, fire extinguishers and distress flares must be approved by the Finnish Maritime Administration.

In addition to the above, boats passing through the Saimaa Canal must have:

- Decree on the prevention of collisions in inland waterway routes
- Decree on traffic rules for canals and movable bridges
- Sea charts numbers 11 and 12, Gulf of Finland

Sailing boats must further have:

- Storm sails
- Safety belt (harness type) with ropes
- Boats passing through the Saimaa Canal must also have auxiliary motors

## RULE

Concerning pilot-free navigation of small leisure boats in the Bay of Vyborg

1 The provisions and requirements of this rule apply to the pilot-free navigation of such foreign small leisure boats and sailing boats (hereafter leisure boats) the hull length of which does not exceed 24 metres and which are on a transit journey from the sea to the Saimaa Canal or vice versa, or which arrive at the ports of Vyborg or Vysotsk through the Saimaa Canal or from the sea.

Leisure boats may sail during the light hours, between 8.00 and 20.00 Moscow time.

2 When navigating in port waters or in the Bay of Vyborg, leisure boats must strictly comply with the provisions of the Convention on the International Regulations for Preventing Collisions at Sea (COLREG-1972). In the section between Brusnitchnoe Lock and Vysotsk port, boats must navigate with their sails down, using only engine.

3 Leisure boats must listen to marine VHF channel 16 at all times when navigating in the area from the national border line to the port water boundaries in the Russian territorial and inland waters of the Gulf of Finland.

In port waters, boats must at all times listen to marine VHF channel 12, as ordered by the harbourmaster.

4 Leisure boats not equipped with communications facilities together with leisure boats whose masters do not speak English or Russian are strictly required to use a pilot.

5 In port waters, leisure boats must remain close to the buoys delimiting the fairway. Manoeuvring of leisure boats in the fairway must not disturb cargo vessels. If leisure boats and merchant vessels arrive at the strait of Lavola, Vysotski bend, at the same time, leisure boats must give way to merchant vessels.

6 The master of a leisure boat must, when navigating in port waters or in the Bay of Vyborg, at all times be at the place from where the leisure boat is manoeuvred.

7 Leisure boats are not allowed to:

- come close to moving vessels or disturb them in any way;
- go ashore in places not designed for this purpose or moor to hydrotechnical structures and navigation equipment;
- take on board any external parties or hand over any objects (goods) to other vessels;
- discharge oil, throw dry litter or food leftovers overboard.

8 The master of a leisure boat is responsible for navigating his/her ship and for complying with the provisions issued in this rule. Should the master of a leisure boat fail to comply with this rule, the competent authority will issue him/her a fine and the harbourmaster will reject his/her permission to pilot-free navigation.

9 In the event that a leisure boat finds itself in a dangerous situation in the Bay of Vyborg, the master of the boat is obliged to notify this to port administration, using communications equipment.

(In rescue situations, the agreement between Finland and Russia on cooperation in the field of search and rescue services in maritime and air transport is to be observed, see Article 1 of the agreement).

10 The master of a leisure must possess a document certifying he/she owns the leisure boat he/she is navigating and/or has the right to navigate it. An English translation of this document must be available.

(NB: Port waters include the entrance fairway to Saimaa Canal, Vyborg sea channel and fairway number 6 until the reception buoy.

#### INSTRUCTION

to captains of foreign small size vessels bounding for the Russian Federation (in the waters of the Vyborg Bay and the Gulf of Finland and Saimaa channel)

Navigating in the waters of Saimaa channel all small size vessels must stop at Sluice # 5 of "Pjalli" to pass the border control and at Sluice # 1 "Brusnitsnoje" to pass customs control.

Navigating to the port of Vyborg the captain of a small size vessel must inform the Russian border authorities about the arrival over phone +7(81378)93362, +79214491071 no later than an hour before the arrival. The point of registration for small size vessels is berth #1 of Vyborg Port. It is prohibited embarkation (disembarkation) persons, loading (unloading) cargo, goods before the border and customs control.

Pursuant to the requirements of the Russian legislation foreign small size vessels can ride out in the territory of the Russian Federation only after border and custom control.

For visiting the seaport it's required to produce an identification document [bearing a mark of a border control body confirming the entry into](#) the Russian Federation to the guard official.

Before the departure the captain of a small size vessel must inform the Russian border authorities about it over phone +7(81378)93362, +79214491071 no later than an hour before the planning departure. The departure is permitted only after border control and customs control.

To pass the border control are required to present: identification documents for the right to cross the State Border (international passports), 2 crew lists, copy of owner passport, small vessel's registration documents and all crewmembers should fill in migration cards (only for those who arrive at Russian Federation, migration cards are not filled in during transit sailing).

To pass the customs control are required to present: a crew list, a copy of small vessel's registration documents, a passenger customs declaration filled by the captain of small size vessel and passenger customs declarations, filled by the crewmen and passengers (in the cases provided by current customs legislation).

Navigating in the waters of the Gulf of Finland in order to ensure the safety of navigation and to control location of vessels, all small size vessels should have onboard technically sound communication facilities to support radio communication with divisions of the Border Guard of the Russian Federation.

Every small size vessel must cross the State Border at the intersections of the channels, according recommended routes and ship-traffic separation zones from the State Border (to the west of island Kozliniy, to the west of island Sommers - between 15 and 16 border buoys, to the west of island Rodsher). During bounding from the state border to the checkpoint and back, or during transit sailing (without entering the ports of the Russian Federation) small size vessels should go along with the fairways, recommended routes and ship-traffic separation zones. It is prohibited embarkation (disembarkation) persons, loading (unloading) cargo, goods, money, animals, launching or taking on board any watercraft, lifting into the air, landing or taking on board any aircraft. It's also prohibited to do fishing, researching, surveying or other activities without special permit of the Russian Border Guard or with such permit, but in violation of the terms of such permit.

When crossing the State Border of the Russian Federation the captain of small size vessel must inform about the purpose of calling at the territory of the Russian Federation. Liaison with the Border Service of the Russian Federation is in the range of the maritime mobile service (16 channel, 156.8 MHz). Unit-based stationary call-sign of the Russian Border Service is - "The Swan"(Lebed'), the border vessels is - "Whale-boat"(Vel'bot), coastguard boats is- "Lombard".

In case of [emergency circumstances](#) or circumstances requiring unauthorized landfall, stop, launching any watercraft or other illegal acts all vessels must ask coastguard of Russian Border Guard's permission on radio 16 channel, 156.8 MHz (call signs- "Coastguard – St. Petersburg", "Coastguard – Vysotsk"), or according above listed call sings. In the presence of mobile communication by telephone: in the city of St. Petersburg - +7 (813) 271-45-88, in the city of Vysotsk, +7(81378) 41-332, +7(81378) 93-370, +7911 1115687

A CUSTOMS DECLARATION FORM MUST BE SUBMITTED IN WRITING OF THE FOLLOWING ITEMS:

1. personal items that are transported separately or have been submitted for transport by a carrier to an address of a natural person;
  2. personal items, regardless of the type of transport, if there are prohibitions or limitations attached to them other than in terms their quantity or technical regulations;
  3. personal items, regardless of the type of transport used, including temporarily imported items, if their value and/or quantity exceeds the limits set for custom-free goods. The provisions on such goods are laid down in the international agreement between Customs Union member states (in 2014 a customs clearance has to be made if the value of the goods is more than EUR 1,500 and/or 50 kg);
  4. vehicles for personal use, regardless of the type of transport used, excluding vehicles that are registered in the territory of Customs Union member states and that are temporarily exported from the territory of the Customs Union and then imported back to the territory;
  5. Customs Union member states' currency, securities and/or cash and traveller's cheques in cases on which provisions are laid down in national and/or international legislation of a Customs Union member state (in 2014 a customs declaration has to be made of financial assets and/or payment instruments, if their value exceeds the equivalent of USD 10,000);
  6. cultural items;
  7. personal hand luggage, if their carrier has also sent goods in a separate shipment;
- other items that are provided in customs legislation of the Customs Union