



CHANNEL DATA

Alignment and buyoage: The fairway begins E of Helsinki Lighthouse, continues to the pilot boarding position and further past Gråskärsbådan northwards in the direction of the West Harbour. Length approx. 24 km/13 nautical miles. There are 6 lines, 4 of which are marked by boards, sector lights and direction lights. The approach (from Helsinki Lighthouse to Katajaluoto) has cardinal marks, the inner section (from Katajaluoto to the harbour) lateral marks. Lit.

Dimensions: Design ship (container ship): l = 210 m, b = 30 m, t = 10.8 m. Design vessel (passenger and cruise ship): l = 330 m, b = 35 m, t = 10.8 m.

The maximum authorised draught in the outer section of the channel up to Melkki is 11.0 m (Sc = -13.0 m and Sc = -12.5 m) and in the inner section of the channel from Melkki to Jätkäsaari, the maximum authorized draught is 10.8 m (Sc = -11.9 m) to quays LJ7 and LJ8 and to the new Hernesaari cruise quay LHD. Further in, there is first a fairway area (Sc = -9.8 m) to quays LJ6 and LHC and after that safe clearance areas to quays LJ5, LJ4, LJ3, LHB and LHA*). Minimum width 253 m.

Anchorage and other special areas: The anchorage area of the channel is situated north of Helsinki Lighthouse. Anchoring is permitted only according to pilot or VTS instructions. There is a widened fairway area where the safe clearance depth is less than in the rest of the channel. The safe clearance depth (Sc) in the widened fairway area is 10.2 m.

NAVIGABILITY

Navigational conditions: The approach is in the open sea and unsheltered from E-S-W winds. From Katajaluoto to the harbour, the channel is protected by islands and skerries.

Ice conditions: Ice usually causes problems only in the harbour basins, where slush may make manoeuvring difficult. Occasionally ice ridges between Hramtsow and Gråskärsbådan.

RECOMMENDATIONS (fairway and harbour)

Speed limits: North of latitude 60°06'N (Koirasaari), the speed limit for all merchant vessels is 30 km/h. West of Hernesaari in the harbour area, the speed limit is 10 km/h.

Wind recommendations: Max. recommended wind speed for vessels of more than 215 m in length is 15 m/s.

Visibility recommendations: All ships should have a visibility of at least 300 m. In addition, for ships of more than 200 m in length, visibility should be at least 1.0 nm.

TRAFFIC SERVICE

Pilotage: E-mail: pilotorder.south@finnpilot.fi. Order from www.pilotonline.fi. +358 (0) 400 907 977, fax: +358 (0) 29 52 53010. Pilot boarding position 60°00,37' N / 24°56,46' E. Pilotage distance 10 nautical miles.

VTS: Helsinki VTS, VHF Channel 71. Tel. +358 20 448 5391, [helsinki.vts\(at\)fintraffic.fi](mailto:helsinki.vts(at)fintraffic.fi) and [supervisors.hki\(at\)fintraffic.fi](mailto:supervisors.hki(at)fintraffic.fi).

Tugs: Privately owned tugs available.

PORT

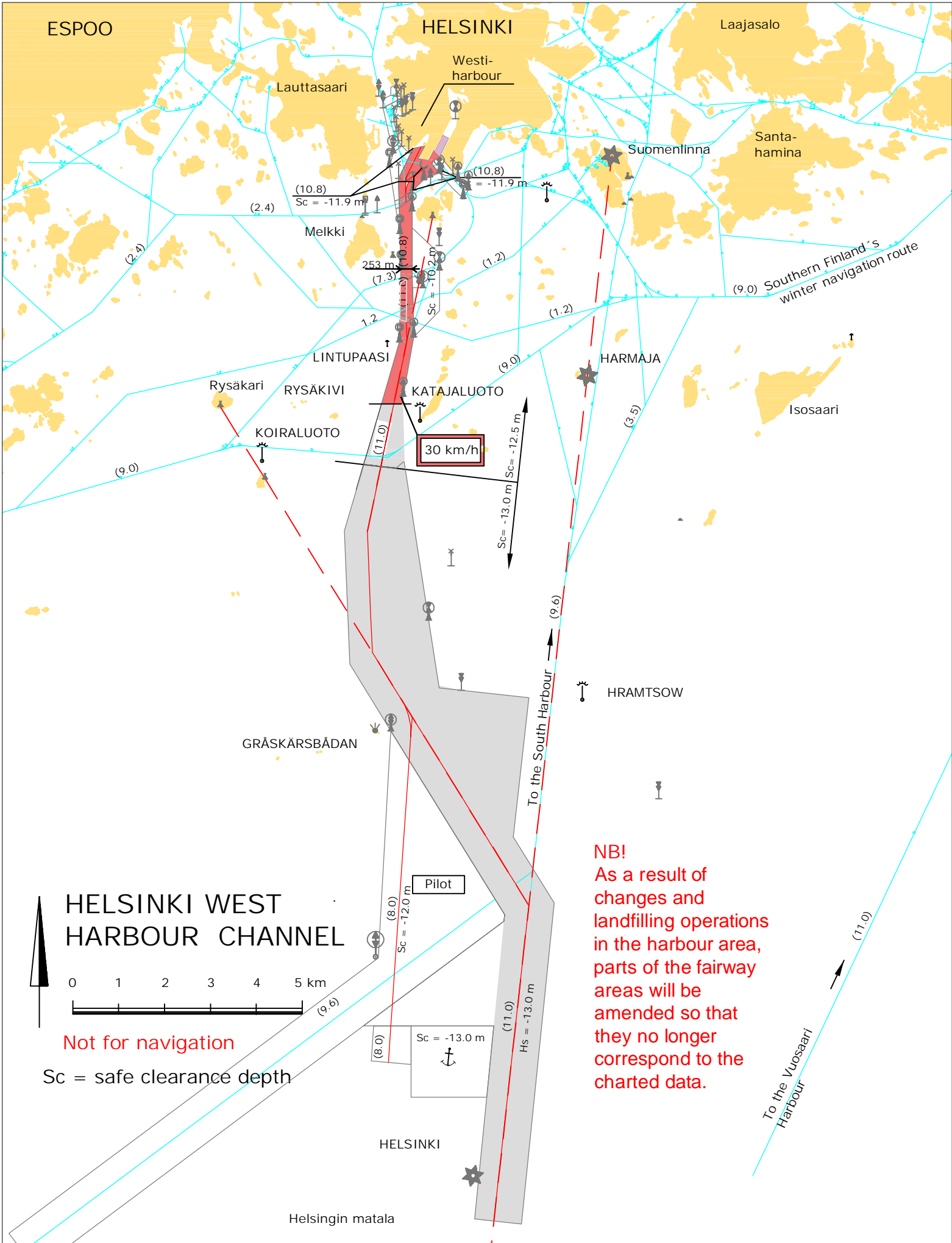
Quays:

Jätkäsaari Quays: LJ3: length 150 m, Sc -7.8 m; LJ4: length 200 m, Sc -8.8 m; LJ5: length 195 m, Sc -8.8 m; LJ6: length 255 m, Sc -9.8 m; LJ7: length 237 m, Sc -11.9 m; LJ8: length 265 m, Sc -11.9 m;
Munkkisaari Quays: LHA length 196 m, Sc *); LHB: length 320 m, Sc -9.15 m; LHC: length 355 m, Sc -9.8 m;
Hernesaari Quay LHD: length 313 m, Sc -11.9 m;
Hietalati Quay LKL: length 85 m, Sc *);
Oil/coal Quay: LEL length 137 m, Sc -9.2 m/-9.8 m.

*) no safe clearance depth information in the fairway database of the Finnish Transport Infrastructure Agency

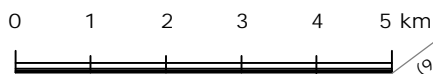
CONTACT

Port of Helsinki, Helsinki
Telephone +358 9 310 1621
Fax +358 9 310 33802
E-mail: port.helsinki@portofhelsinki.fi



NB!
 As a result of changes and landfilling operations in the harbour area, parts of the fairway areas will be amended so that they no longer correspond to the charted data.

HELSINKI WEST HARBOUR CHANNEL



Not for navigation

Sc = safe clearance depth

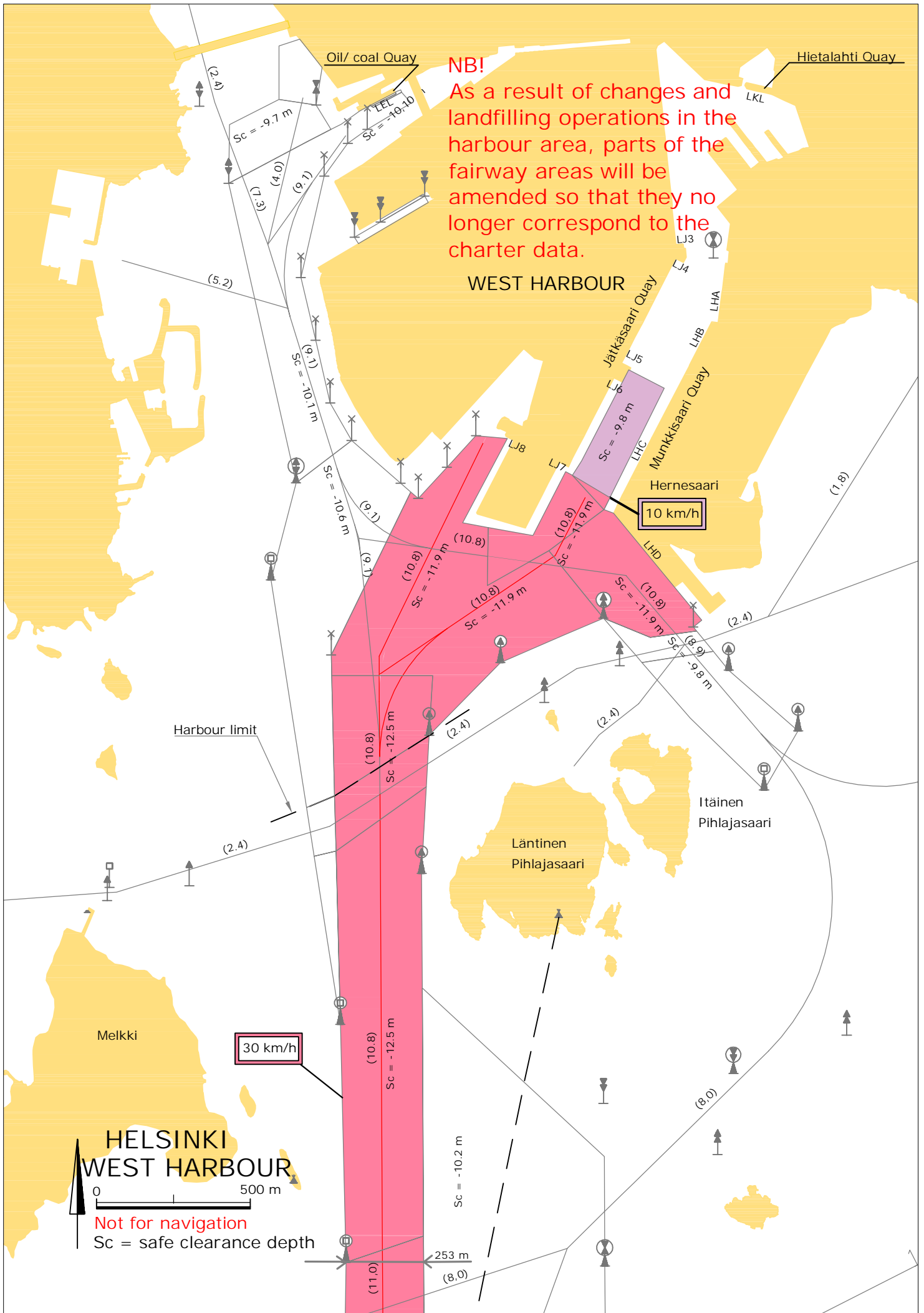
Pilot

Sc = -13.0 m

To the South Harbour

To the Vuosaari Harbour

Helsingin matala



NB!
 As a result of changes and landfilling operations in the harbour area, parts of the fairway areas will be amended so that they no longer correspond to the charter data.

WEST HARBOUR

30 km/h

10 km/h

HELSINKI WEST HARBOUR

0 500 m

Not for navigation
 Sc = safe clearance depth