



FAIRWAY CARD

UTÖ-LÖVSKÄR CHANNEL (10.0 M)

6.7.2021

CHANNEL DATA

Alignment and buoyage: The Utö-Lövsjär channel (10.0 m) starts at the Utö-Naantali channel N of Utö and continues from south to north between Nagu and Korpo towards Lövsjär. The fairway ends W of Lövsjär in the Utö-Naantali channel. 14 lines marked with boards and lights. Length approx. 59.5 km/32.1 nm. Cardinal marking. Lit.

Dimensions: Design ship l = 200 m, b = 32 m, t = 10 m. Maximum authorised draught 10.0 m. Safe clearance depths (MW 2000) Lövsjär-Hällers -11.5 m, Hällers-Utö -12.0 m. Minimum width 221 m. Minimum turning radius 1,000 m.

NAVIGABILITY

Instead of the route which goes in open sea, this fairway offers a route in the Archipelago Sea (Utö-Lövsjär-Isokari), which is shorter, more sheltered against wind and with lighter ice conditions during difficult ice winters.

Navigational conditions: The first leg of the fairway, from Utö to Lohm, goes through a more open archipelago where navigation can be hampered by hard winds and heavy seas. The leg between Lohm and Lövsjär in the sound between Nagu and Korpo is sheltered and well marked. The channel has mainly two traffic lanes, but on the line W of Vandrock the fairway area narrows down to one lane. At the Lövsjär bend and Korpo ferry berth special attention and caution should be observed due to the crossing traffic.

Ice conditions: In the approach, Utö-Lohm, the ice conditions vary: sometimes there is no formation of ice, at times there is moving ice and the buoys can be pressed beneath the surface. At the entrance, Lohm-Lövsjär) there is normally 10 – 60 cm thick fast ice, which remains passable all winter due to the heavy traffic.

RECOMMENDATIONS

Speed: The maximum permitted speed in the vicinity of the Korpo cable ferry is 16 km/h. Vessels with a draught equalling the maximum authorised draught are warned to beware of squat (design speed in the channel 13.5 knots with safe clearance depth -12.0 m).

Wind gauge: Utö.

TRAFFIC SERVICE

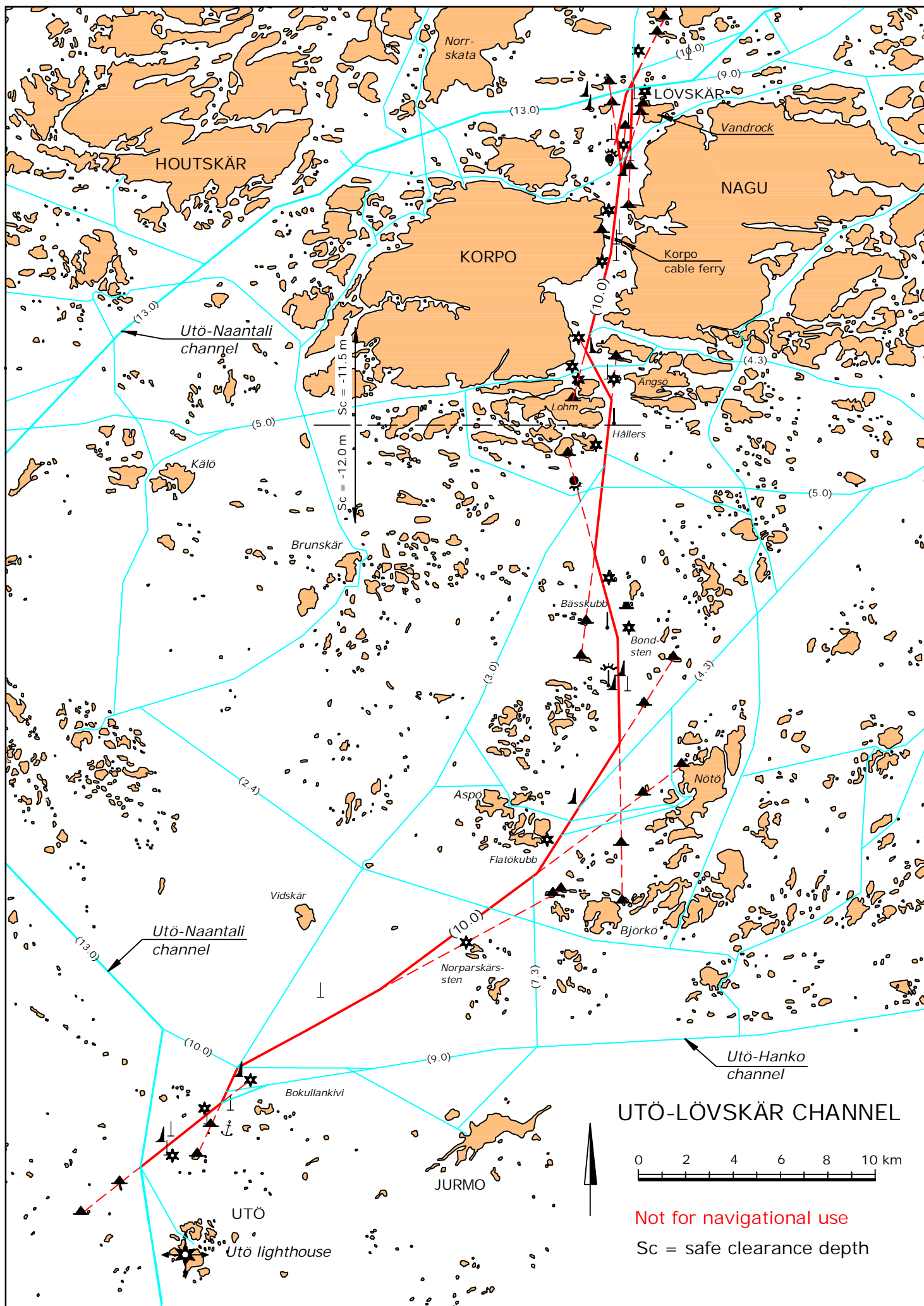
Pilotage: E-mail: pilotorder.west@finnpilot.fi. Order form: www.pilotorder.fi.

Tel.: +358 (0) 400 907979, fax: 358 (0) 29 52 53012. Pilot boarding position 59°44.57', 21°20.52' (off chart).

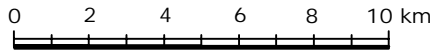
NB. Pilot boarding position to be agreed upon in winter and in adverse weather conditions.

VTS: Archipelago VTS, VHF channel 71. Telephone 0204 48 6521, e-mail: archipelago.vts@fintraffic.fi

Tugs: Privately owned tugs.



UTÖ-LÖVSKÄR CHANNEL



Not for navigational use

Sc = safe clearance depth