

#### FAIRWAY DATA

Alignment and buoyage: From the pilot boarding area, approx. 2,7 km W of Pietarsaari edge mark to the port. Length approx. 13 km / 7 nautical miles. Three lines in the channel, all marked with boards. Lateral marks. Lit.

Dimensions: Design ship: dry cargo ship, L = 200 m, B = 35 m, T = 11,0 m. Design draft 11,0 m. Safe clearance depth: in the outer fairway -12,9 m, in the dredged inner fairway, -12,6 m in the harbour area -12,1 m and to the berth -11,5 m. Minimum width 120 m. Design speed in the outer fairway 11 knots, in the inner fairway 9 knots, in the harbour area 6 knots.

Southern most fairway area in the harbour sc -8.0 m leads to the quays BQ, SQ and PK.

Note. Depth information reference level is N2000 (Baltic Sea Chart Datum 2000 / BSCD 2000).

<https://www.traficom.fi/en/transport/maritime/n2000-fairway-and-nautical-chart-reform-improved>

Areas with meeting and overtaking prohibitions: The channel has one permanent area of meeting and overtaking prohibitions, look closer to Bothnia VTS Masters´ Guide.

<https://tmfg.fi/en/vts/masters-guide>

Anchorage and other special areas: There is an anchorage area (depth approx. 20 m) suitable for larger vessels in the outer channel, 2,8 km W of Pietarsaari edge mark.

#### NAVIGABILITY

Navigational conditions: The outer fairway from Kallan to Mässkär is open and unsheltered from N-W-E winds. The inner part of the fairway a length of 3 km has been dredged and forms a 120 m wide canal. No heavy swell is created but due to the narrowness of the channel winds and squat effect might affect the navigation of the vessel.

Ice conditions: The area is normally ice-covered from December to April. During ice formation winds and currents may create a heavy brash ice barrier between Pietarsaari edge mark and Mässkär. Later on ice ridges may occur off Pietarsaari edge mark. Ice movement may cause buoys and spar buoys to be pressed under ice (surface) over the whole length of the fairway.

#### OPERATIONAL RECOMMENDATIONS

Wind: Recommendations for vessels of more than 150 m in length, for inbound < 10 m/s and for outbound < 15 m/s.

Wind gauges: Marine weather observations: Pietarsaari Kallan.

Sea level: Pietarsaari mareograph.

#### TRAFFIC SERVICE

Pilotage: E-mail [pilotorder.west@finnpilot.fi](mailto:pilotorder.west@finnpilot.fi) . Order a pilot: [www.pilotonline.fi](http://www.pilotonline.fi) Tel. +358 (0) 400 907 979, fax +358 (0) 29 52 53012. Pilot boarding position Pietarsaari: 63°44,51' N, 22°28,49' E. Pilotage distance 7 nautical miles. NB. In winter and adverse weather conditions the pilot boarding position is separately agreed.

VTS: Bothnia VTS, VHF Channel 67. Tel. +358 20 448 7356. Email: [bothnia.vts@fintraffic.fi](mailto:bothnia.vts@fintraffic.fi)

Tugs: Oy Kraftline Ab / [www.kraftline.fi](http://www.kraftline.fi) : tugboat M/S Simson 1235 kW, M/S Bock 1560 kW, tel. +358 40 557 5692 / 24h.

#### PORT

Quays: Laukko Quay L1, L2 and L3: Ro-Ro berth, oil and general cargo, length 502 m, safe clearance depth -12,1m and to the berth -11,5 m; BQ Buskö Quay: Ro-Ro berth, length 160 m, safe clearance depth -8,0 m. SQ South Quay: length 180 m, safe clearance depth -8,0 m; PK Cement Quay: safe clearance depth -8,0 m.

Harbour basin: Swinging area 350 m x 750 m

Contact: Port of Pietarsaari Ltd.

tel. +358 6 723 6128

[office@portofpietarsaari.fi](mailto:office@portofpietarsaari.fi)

Port Control

tel. +358 6 723 1388

VHF 16 & 13

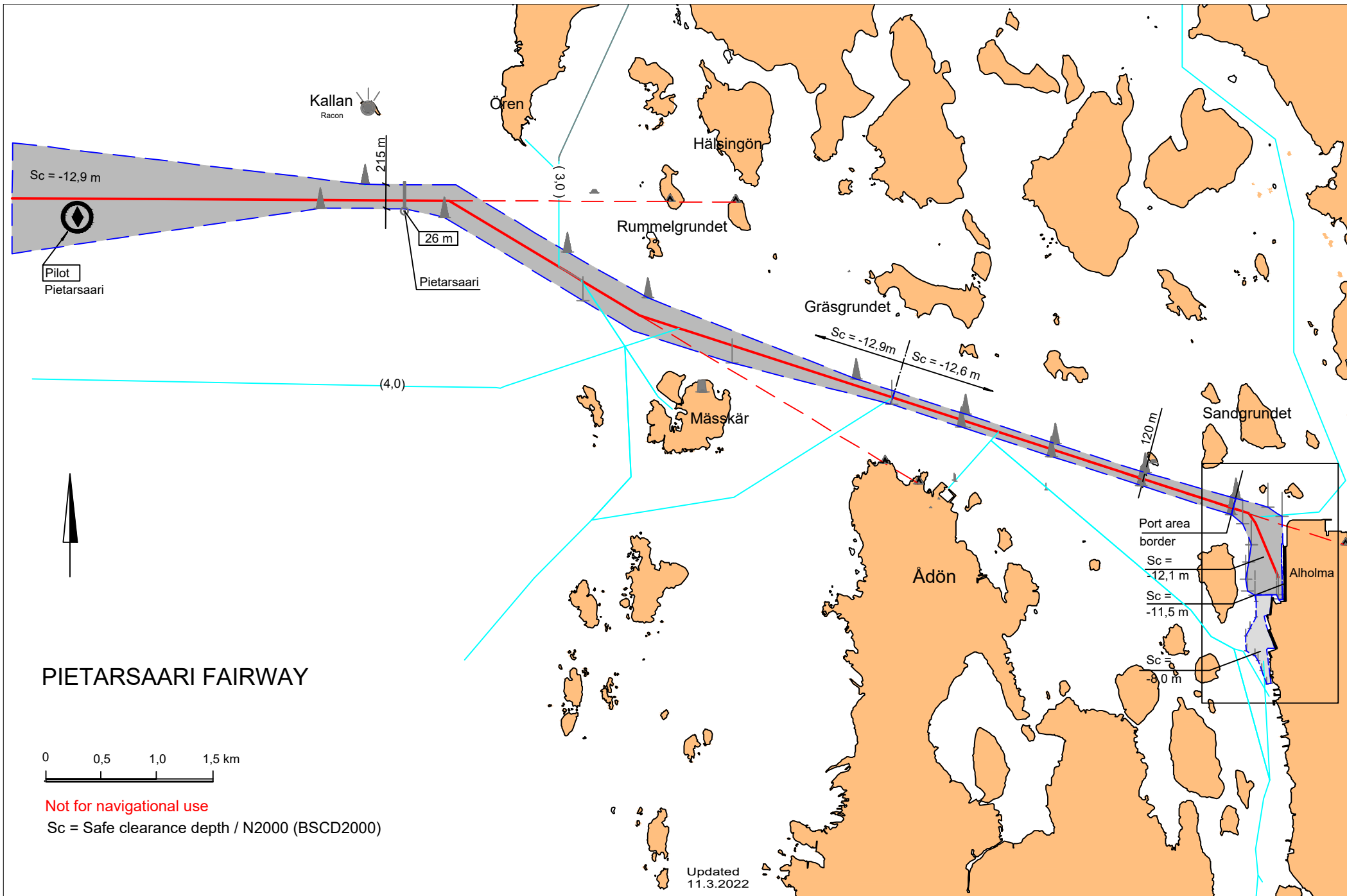
[satamavalvojat@portofpietarsaari.fi](mailto:satamavalvojat@portofpietarsaari.fi)

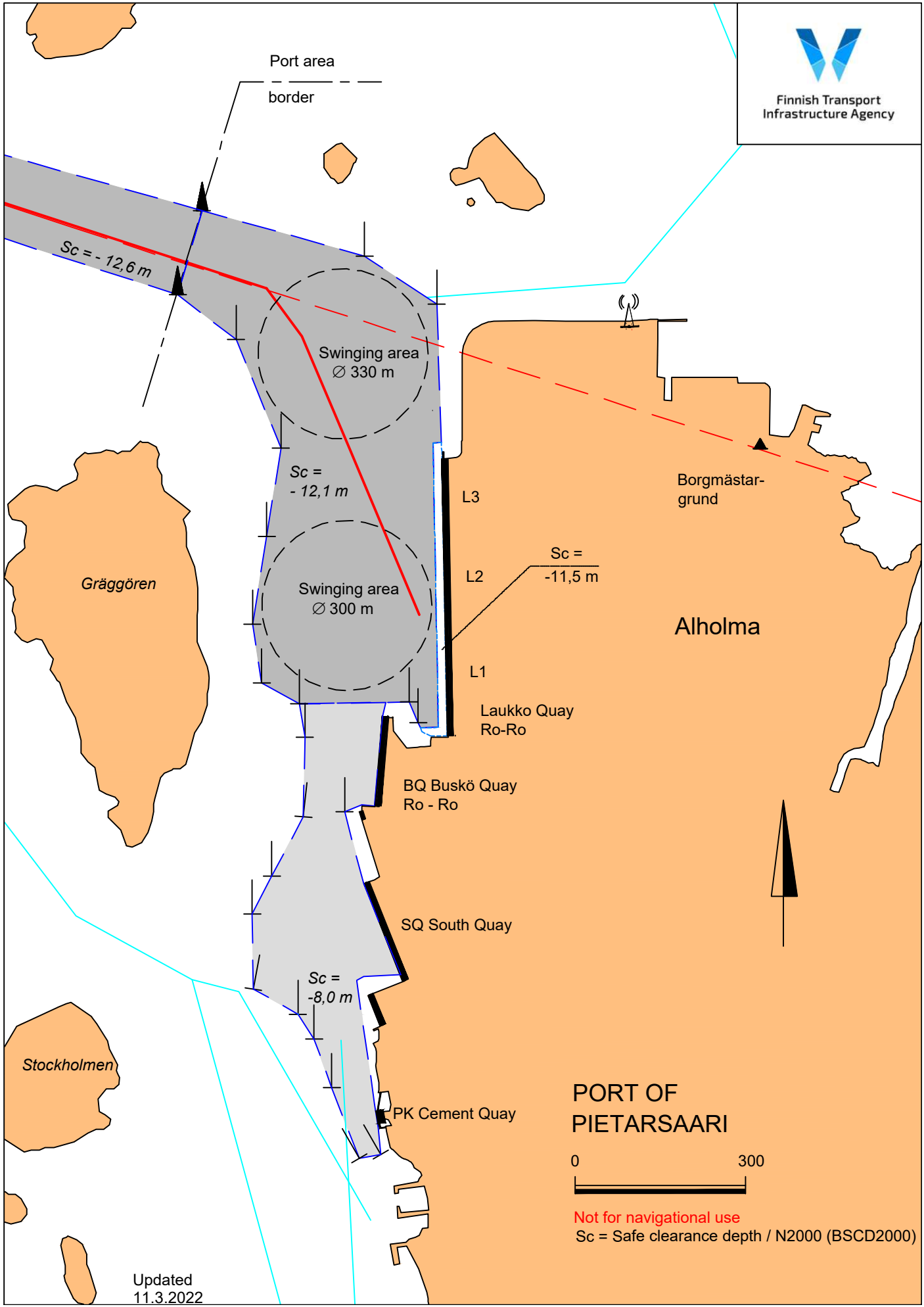
managing director Juha Hakala

tel. +358 40 585 2332

technical manager / PFSO Johanna Heinoja

tel. +358 40 508 1906





Updated  
11.3.2022

## PORT OF PIETARSAARI



Not for navigational use  
Sc = Safe clearance depth / N2000 (BSCD2000)