

CHANNEL DATA

Alignment and buoyage: The fairway starts S of Kemi 1 lighthouse and leads to the port of Oulu Oritkari. Length a. 80 km/ 43 nautical miles. 13 navigation lines. Marked with boards, edge marks, buoys, spar buoys in combined use. Lateral marks. Lit.

Dimensions: Design vessel: L= 240 m, B= 33, T= 12,5 m. Design draft 12,5 m. Safe clearance depth: -14.8 m in the approach, -14,3 m in the entrance and in port -13,6 m. Minimum width 116 m, turning radius 1200 m. Design speed in the outer part 13 knots, in the inner part 11 knots, in the channel outside the port 8 knots.

Note. Depth information reference level is N2000 (Baltic Sea Chart Datum 2000 / BSCD 2000).

<https://www.traficom.fi/en/transport/maritime/n2000-fairway-and-nautical-chart-reform-improved>

Areas with meeting and overtaking prohibitions: The channel has one permanent area of meeting and overtaking prohibitions, look closer to Bothnia VTS Masters´ Guide

<https://tmfg.fi/en/vts/masters-guide>

Speed limits and recommendations: Between Löyhänmutka – Kotakari a speed limit 22 km/h.

Anchorage areas etc.: Anchorage close to Kyrönkari, N of the fairway, about 3 km before Vihreäsaari harbour (depth -14,3 m, mud seabed) and west of Kotakari is a wider area on right.

NAVIGABILITY

Navigational conditions: The approach between Kemi 1 and Suurhiekkä consists of open sea; W - SW winds create heavy seas. Sea state is reduced by shallows from Kattilankalla onwards. Between Kattilankalla and port the fairway is sheltered by some small islands and skerries. The final, approximately 2,5 km long part, between Kyrönkari anchoring area and port is a dredged 116 m wide channel

NB:

Ice conditions: In early winter there is drifting ice along the entire fairway. Outside Kemi 1 and Suurhiekkä the ice is usually also ridged. May cause buoys and spar buoys to be pressed under ice (surface) all the way to Kattilankalla. From January to April there is 50–80 cm thick fast ice between port and Kattilankalla. Warm water effluents alleviate ice conditions in Oritkari harbour.

RECOMMENDATIONS

Speed: Ships with a design draught of 12,5 m should make allowance for that squat effect might affect the navigation of the vessel between Kyrönkari and the port.

Wind gauges: Marine weather observations, Hailuoto Marjaniemi and Oulu Vihreäsaari and Kemi 1 lighthouse.

Sea level: Kemi mareograph, Oulu mareograph outside of Oulu , Toppila harbour.

TRAFFIC SERVICE

Pilotage: Email: pilotdispatch.bothnia@finnpilot.fi Order a pilot: www.pilotonline.fi

Tel.: +358 29 5253 440, fax +358 (0) 29 52 53012. Pilot boarding positions for vessels using design draft 11.5 m Oulu W: 65° 05.01' N 024 ° 03.30 E.

Safe clearance depth of the area (sc -14.0 m, designed speed 14.0 knots) which vessels can use to and from the pilot boarding position is displayed on the map.

The area is marked with virtual AIS AtoNs, broadcasting of virtual AIS marks for secured area will be started if needed.

Vessels with design draft over 11.5 m, pilot boarding and disembarking will be agreed separately.

Pilot boards or disembarks the vessel at the pilot position, but the actual pilotage begins/ends at the Oulu fairway, 65° 20.8940' N, 023° 58.2420' E.

NB. In winter and adverse weather conditions the pilot boarding position is agreed separately.

VTS: Bothnia VTS, VHF channel 67. Tel. +358 (0) 20 448 7356. Email: bothnia.vts@fintraffic.fi

Towage: Tuura 3 x 883 kW, R-Towing Inc.

Booking: +358 400 256517 eller +358 400 382652, VHF 12/67

PORT

Quays: Vihreäsaari harbour: oil terminal, 301, length 72 m, bulk terminal, 303, 302, length 150 m, safe clearance depth of -11.3 m and a fairway area with sc -6,9 m).

Oritkari harbour: main quay 103, length 343 m, Ro/Ro ramp 102 sc -9,2 m;

North Quay 101: length 160, Ro/Ro ramp, sc -10,8 m,

Chemical terminal 1: 204, length 162 m, sc -8,0 m,

Chemical terminal 2: 203, length 70 m, sc -10,8 m,

West Quay: berths 2, 105, length 290 m, sc -13,6 m.

Nuottasaari Quay: berths 1,2 and 3, 202, 201, length 320 m, sc -6.8 m.

Harbour basin: Vihreäsaari harbour: diameter of turning circle 330 m. Oritkari harbour: diameter of turning circle 320 m.

Contact Information:

Port of Oulu Ltd

mobile +358 44 703 2753

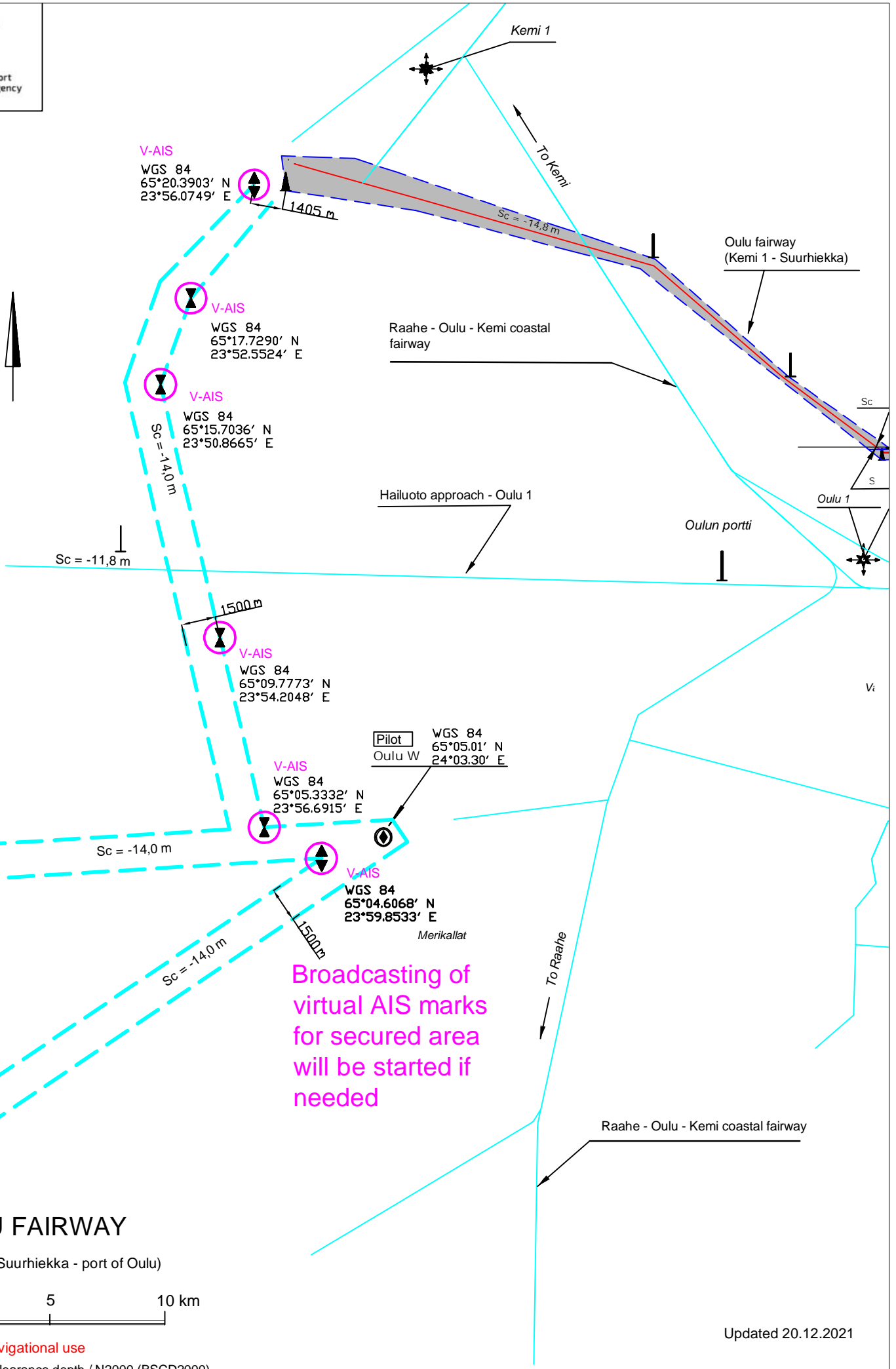
fax +358 8 557 2040

Port Director Marko Mykkänen

mobile +358 44 703 2750

Port Traffic Manager Sampo Kananen

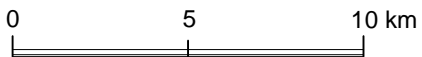
mobile +358 44 703 2751



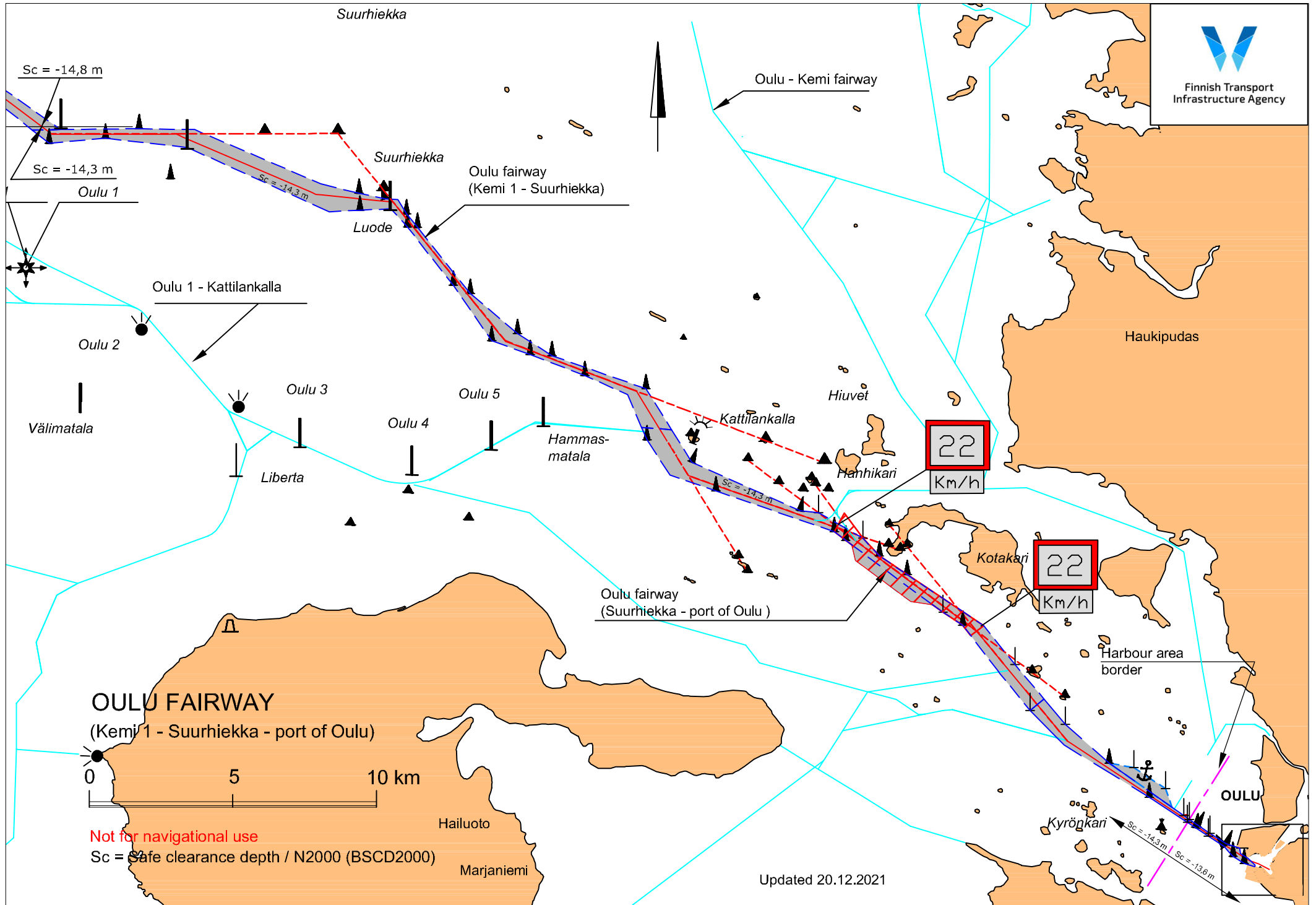
Broadcasting of
virtual AIS marks
for secured area
will be started if
needed

OULU FAIRWAY

(Kemi 1 - Suurhiekkä - port of Oulu)



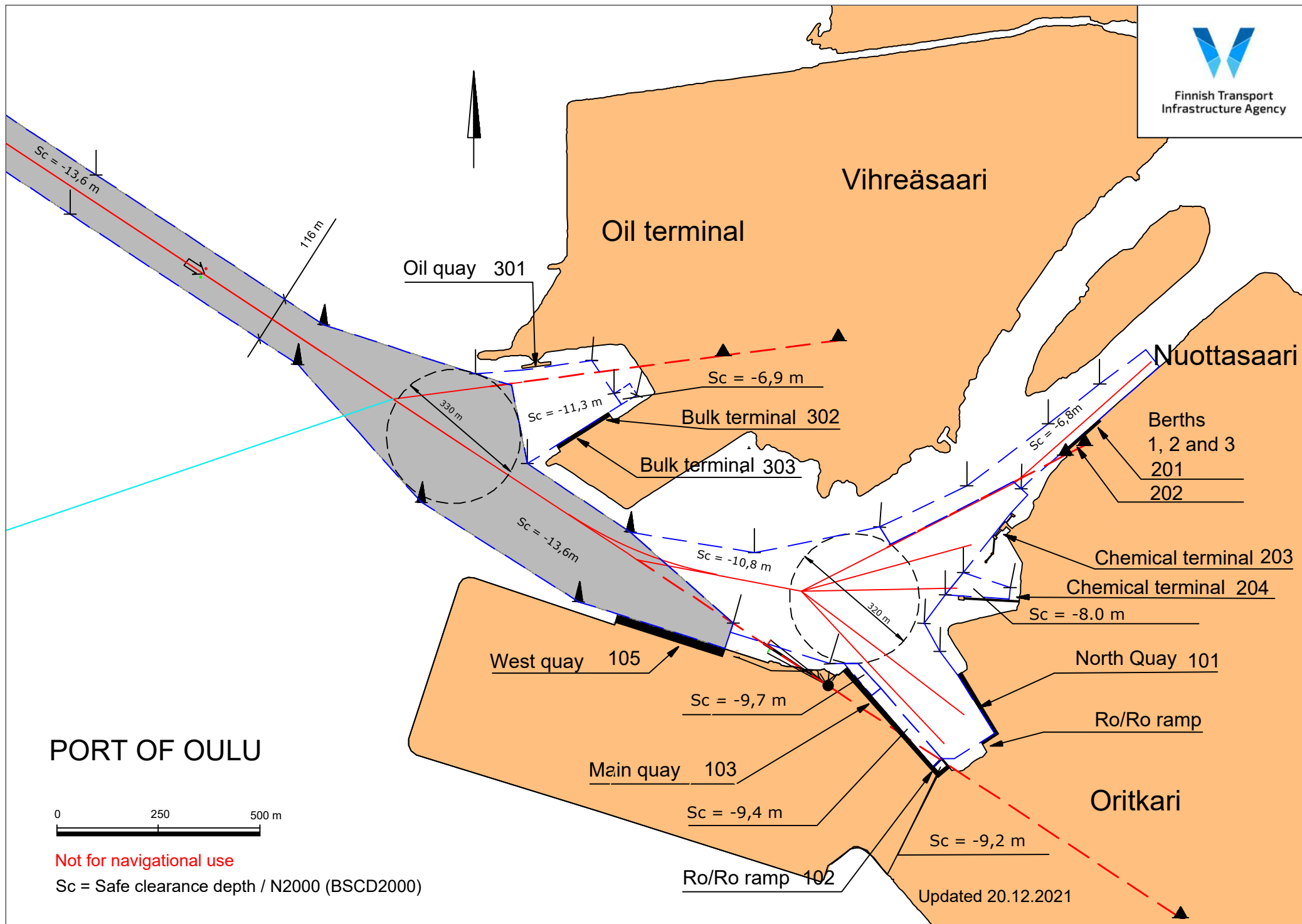
Not for navigational use
Sc = Safe clearance depth / N2000 (BSCD2000)



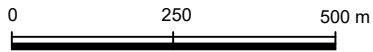
OULU FAIRWAY
(Kemi 1 - Suurhiekkä - port of Oulu)

0 5 10 km

Not for navigational use
Sc = Safe clearance depth / N2000 (BSCD2000)



PORT OF OULU



Not for navigational use

Sc = Safe clearance depth / N2000 (BSCD2000)

Updated 20.12.2021