



FAIRWAY CARD

MARIEHAMN CHANNEL (8.2 M)

1.7.2021.2021

CHANNEL DATA

Alignment and buoyage: The fairway starts S of Nyhamn from the channel Turku-Stockholm (9.0 m) or SW and S of Marhällan lighthouse. The three routes converge W of Korsö and continue to the port of Mariehamn. Length from Nyhamn approx. 18.5 km/10 nm. 7 navigation lines. Length from Marhällan approx. 10.5 km/5.7 nm. 6 navigation lines. Cardinal marking. Lit.

Dimensions: Design vessel: car ferry. Maximum authorised draught 8.2 m, safe clearance depth (MW2000) -9.2 m. Minimum width 200 m. Design speed 13.0 knots.

Anchorage areas etc.: Anchoring and overtaking in the outer channel NE of Skogsö.

NAVIGABILITY

Navigational conditions: The outer channel is unsheltered against S-W winds. The channel continues W of Korsö sheltered by the archipelago and mainland to the port of Mariehamn.

Ice conditions: The fairway is often open in the winter or there can be formation of thin ice.

RECOMMENDATIONS (fairway and harbour)

Speed: In the inner harbour the speed limitation is 17 km/h.

Wind gauges: on Korsö and another in the harbour area.

TRAFFIC SERVICE

Pilotage: e-mail: pilotorder.west@finnpilot.fi Order form: www.pilotorder.fi

Tel: +358 20754 6153, fax: +358 20754 6163. Pilot boarding positions: Marhällan 60°01.3' 19°50.3', pilotage distance 10.5 km; Nyhamn 59°56.5', 19°57.5', pilotage distance 18.5 km.

VTS: Archipelago VTS, VHF channel 71. Tel. +358 20 448 6521. E-post: archipelago.vts@fintraffic.fi

Towage: Privately owned tugs available.

PORT

Quays: *Västerhamn:* Quays 1 and 2, length 250 m, depth 7,7 m and 8,1 m
quay 3, length 205 m, depth 8,5 m, ro/ro ramp
quay 4, length 156 m, depth 8.4 m, ro/ro ramp
quay 5, length 140 m, depth 8.2 m, ro/ro ramp
quay 6, length 150 m, depth 9.2 m, ro/ro ramp
Klintkajen: length 30 m, authorised draught 5.0 m (not on the chart).

Cargo handling: quay 1-2 only for passenger ships. Quay 3-6 only for ro-ro ships.
The oil terminal is located in the northern part of the bay.

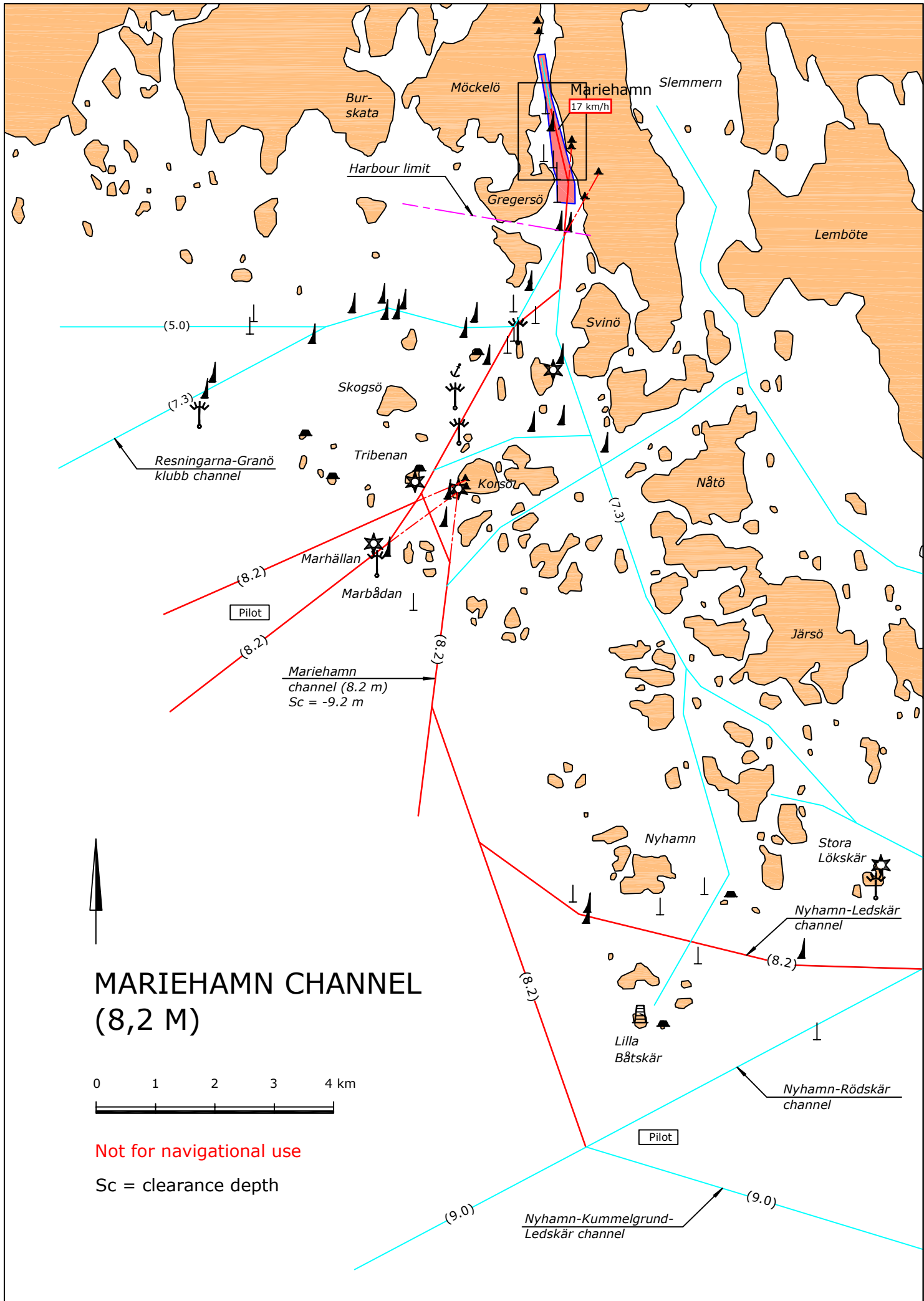
Harbour basin: Max draught -8.2 m

Contact

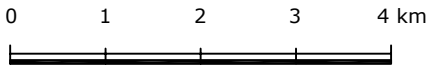
Port of Mariehamn; tel. +358(0)18 5310

Harbour master Helena Jansson; puh +358(0)18 531473, helena.jansson@hamnen.ax

Port service; tel +358(0)18 531476



MARIEHAMN CHANNEL (8,2 M)



Not for navigational use

Sc = clearance depth

