



FAIRWAY CARD

**PORI, MÄNTYLUOTO CHANNEL (12.0 M)**

1.7.2021

FAIRWAY DATA

**Alignment and buoyage:** The channel (12.0 m) starts at the pilot boarding position SW of Kaijakari light-house and continues to the port of Mäntyluoto. Length approx. 11.2 km. Three lines marked with boards. Lateral marks. Lit.

**Fairway dimensions:** Design ship: general cargo ship, l = 210 m, b = 35 m, t = 12.0 m. Authorised draught 12.0 m, safe clearance depths (MW2005): in the approach -14.0 m, in the entrance -13.8 m and in the harbour area -13.5 m. Minimum width in the channel 170 m, in the harbour 172 m.

**Anchorage and special areas:** Anchorage outside the channel in the vicinity of the pilot boarding position. In addition there is a secured area with the water depth -11.2 m NW of the harbour basin which can be used e.g. as a waiting area.

FAIRWAY NAVIGABILITY

**Navigation conditions:** The channel consists of open sea and is unsheltered as far as the breakwaters at the harbour entrance. Strong especially S-W-NW winds create heavy seas.

**Ice conditions:** Fast ice in the channel only during very cold winters. In normal winters the ice is in movement in the fairway all winter. Westerly winds cause ridges at the channel entrance. Ice movement may cause buoys to be pressed beneath the surface and their lighting devices of the light buoys may be damaged.

TRAFFIC RECOMMENDATIONS (channel and harbour)

**Speed limits and recommendations:** Vessels with a draught equalling the maximum authorised draught are warned to beware of squat (design speed in the channel with minimum safe clearance depth 12.5 kn).

VESSEL TRAFFIC SERVICES

**Piloting:** E-mail: [pilotorder.west@finnpilot.fi](mailto:pilotorder.west@finnpilot.fi). Order form [www.pilotorder.fi](http://www.pilotorder.fi). Tel. +358 (0) 400 907979, fax +358 (0) 29 5253012. Pilot boarding position 61°33.5', 21°16'. Pilotage distance 4 nm. NB. Pilot boarding position to be agreed upon in winter and in adverse weather conditions.

**VTS:** West Coast VTS, VHF channel 9; phone +358 (0) 20 448 6645  
e-mail: [westcoast.vts@fintraffic.fi](mailto:westcoast.vts@fintraffic.fi)

**Tugs:** Orders placed by phone +358 400 591 560. First tug to be ordered 2 h and second tug 4 h in advance.

HARBOUR

Quay no 1: length 250 m, safe clearance depth 13,5 m  
Kallonlahti: quay no 20-25; length 650 m, safe clearance depth 11,2 m  
Quay no 3-5, 7 and 14-19, safe clearance depth 8,1 m

**Cargo handling:** Quay no 1: 2 x Liebherr 140 t crane; Kallonlahti quay no 20-25: 60 t, 50 t cranes and two 40 t cranes; Quay no 14-19: two 40 t cranes and one 200 t crane.

**Harbour basins:** Swinging area, diameter 343 m.

CONTACTS

**Port of Pori, Pori**

e-mail: [info.port@portofpori.fi](mailto:info.port@portofpori.fi)

Managing Director Vesa Mäkilä; phone 044 702 2601, e-mail: [vesa.makila@portofpori.fi](mailto:vesa.makila@portofpori.fi)

Pekka Friman; phone 044 701 2633, e-mail: [pekka.friman@portofpori.fi](mailto:pekka.friman@portofpori.fi)

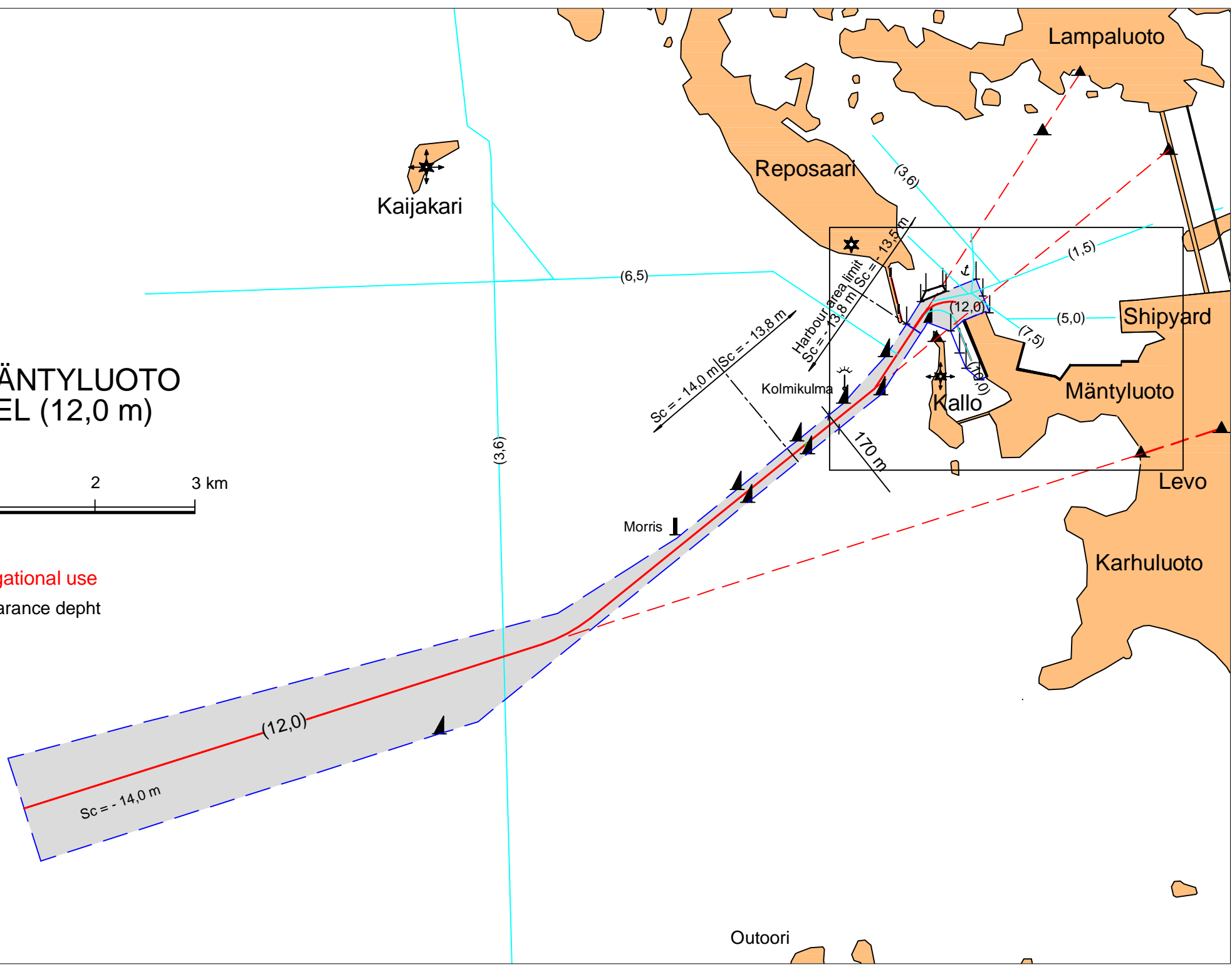
Port Control 24 h; phone 044 701 2623, e-mail: [valvojat.satama@portofpori.fi](mailto:valvojat.satama@portofpori.fi)

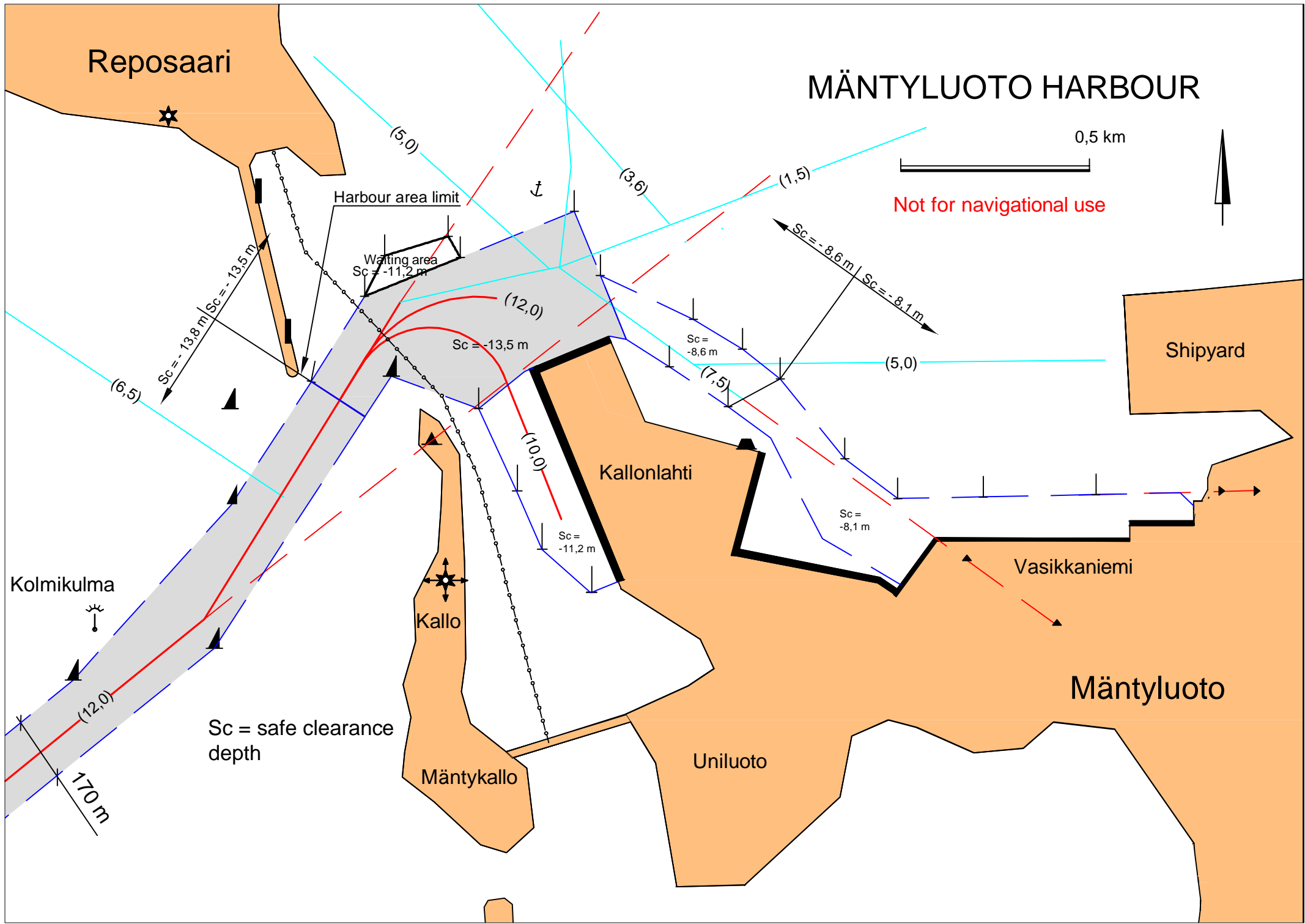
# PORI MÄNTYLUOTO CHANNEL (12,0 m)



Not for navigational use  
Sc = safe clearance depth

Pilot





Reposaari

# MÄNTYLUOTO HARBOUR

0,5 km

Not for navigational use

Shipyard

Kallonlahti

Kallio

Vasikkaniemi

Mäntyluoto

Uniluoto

Mäntykallo

Kolmikulma

Sc = safe clearance depth

170 m

(12,0)

Sc = -13,8 m

Sc = -13,5 m

Waiting area  
Sc = -11,2 m

Harbour area limit

Sc = -13,5 m

(12,0)

Sc = -8,6 m

(7,5)

Sc = -8,6 m

(5,0)

Sc = -8,1 m

Sc = -11,2 m

(10,0)

(12,0)

(1,5)

(3,6)

(5,0)