



Finnish Transport  
Infrastructure Agency

FAIRWAY CARD

19.11.2021

LOVIISA CHANNEL (9.5 m)

CHANNEL DATA

Alignment and buoyage: The channel branches off from the 10.0 m deep Orregrund–Kotka channel at the pilot boarding position S of Orregrund and continues, 9.5 m deep, to Valko harbour. Length approx. 21 km/11 M. Seven navigation lines, marked by boards and sector lights. Cardinal marks in the approach, lateral marks in the entrance, i.e. between the Gulf of Finland Winter Route and the Bay of Loviisa. Lit.

Dimensions: Design vessel: l = 185 m, b = 28 m, t = 9.5 m. Authorised draught 9.5 m. Safe clearance depth -12,0 m in the approach, -11.5 m E of Hudö, -11.0 m in the entrance and -10.5/10.2 m in the harbour area. Minimum width 100 m. Design speed 11 knots.

Anchorage areas etc.: Anchorage in the bay E of Ratholmen and Lindholmen. Anchoring possible also in the anchorage area of the Orregrund–Kotka channel, 4.5 m SW of Tainio Lighthouse.

NAVIGABILITY

Navigational conditions: The approach is unsheltered against SE-S-SW winds as far as the ramark Lodgrund, after which the channel continues, sheltered by islands and the mainland, to port. There is a narrow passage, 120 m wide, E of Hudö and another one, 100 m wide, E of Trollholmen, with increased risk of bank suction.

In the passage E of Trollholmen, the gross underkeel clearance of mere 1.5 m and the small water cross-section may affect the navigability of vessels sailing at max. draught. In these passages, part-loaded oversized vessels in particular should take prevailing wind directions into account and use tugs for assistance, if necessary. In the entrance and the port there is practically no swell.

Ice conditions: There is a bubbling device in the harbour basin; as a rule, ice difficulties do not arise.

RECOMMENDATIONS (channel and harbour)

Harbour basin: Use of anchors prohibited in winter to protect the bubbling tubes at the bottom.

TRAFFIC SERVICE

Pilotage: e-mail [pilotorder.east@finnpilot.fi](mailto:pilotorder.east@finnpilot.fi). Order form [www.pilotonline.fi](http://www.pilotonline.fi). Tel. +358 (0) 400 907 978, fax: +358 (0) 29 52 53011. Pilot boarding position 60°15.43', 26°26.79'. Pilotage distance 12 M.

VTS: Kotka VTS, VHF Channel 67. Tel. +358 20 448 5391, [kotka.vts\(at\)finntraffic.fi](mailto:kotka.vts(at)finntraffic.fi) and [supervisors.hki\(at\)finntraffic.fi](mailto:supervisors.hki(at)finntraffic.fi).

Towage: Privately owned tugs. Tug assistance non-mandatory.

PORT

Quays: Grain Silo Quay, authorised draught -9.2 m; Bulk/Deep Water Quay, authorised draught -10.0 m; two more berths, authorised draught -7.5 m, and 1-2 berths, authorised draught -8.4 m.

Grain and cement pier and ramp, Quays 1a-1b: total length 163.5 m, **safe clearance depth 9.5 m**;

Quay 2: length 114 m, **safe clearance depth 8.0 m**;

Quays 3 and 4 total length 280m, **safe clearance depth 7.3m**;

Quay 3: length 105 m, **safe clearance depth 7.3 m**; Quay 4, length 175 m, **safe clearance depth 9.0 m**;

bulk / deep pier, Quay 6, length 141m, **safe clearance depth 9.5m**.

In the northern part of the port is also located on the dock piers, the contact directly from the dock operator

Cargo handling: Cranes, mobile cranes.

**Mooring and removal services:** Valkon Satamapalvelu Oy tel. +358 (0) 40 071 7215 (24h).

Incoming vessels: The pilot orders mooring on board after boarding by telephone.

For a vessel arriving without a pilot, a ship or agent orders mooring 2 hours before arrival.

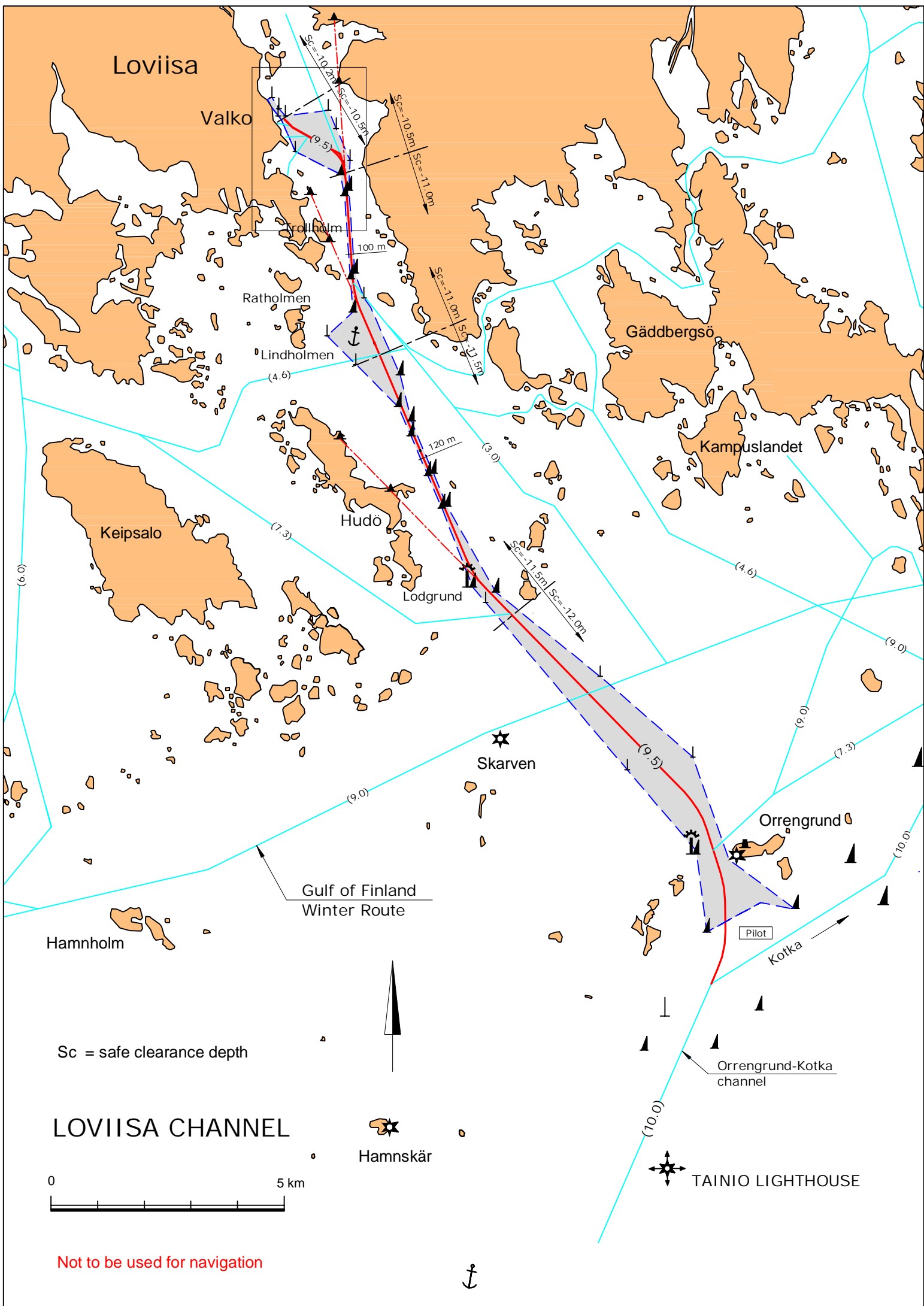
Departing vessels: The ship's agent will order the disembarkation at least 1.5 hours before departure.

Harbour basin: sheltered against swell and winds. Water depth 10.2/10.5 m.

Diameter of swinging area 986 m.

Contact: Traffic service and other supervision 24h tel. +358 (0)40 071 7215

Loviisan Satama Oy Managing Director Tiina Vepsäläinen tel. +358 (0) 440 555 731  
Up-to-date information: [www.portofloviisa.fi](http://www.portofloviisa.fi)



Loviisa

Valko

Ratholmen

Lindholmen

Hudö

Keipsalo

Hamnholm

Skarven

Orregrund

Gulf of Finland  
Winter Route

Pilot

Orregrund-Kotka  
channel

Hamnskär

TAINIO LIGHTHOUSE

Not to be used for navigation

(9.5)

Sc=10.5m

Sc=11.0m

Sc=11.0m

Sc=11.5m

(7.3)

(3.0)

Sc=11.5m

Sc=12.0m

(9.0)

(4.6)

(9.0)

(9.0)

(7.3)

(10.0)

(10.0)

100 m

120 m

(6.0)

(7.3)

(9.0)

(4.6)

(9.0)

(9.0)

(7.3)

(10.0)

(10.0)

# PORT OF LOVIISA

Monäs



Not to be used for navigation

Sc = safe clearance depth

Bay of Loviisa

Bulk/  
Deep Quay

Sc = - 9.9 m

Sc = - 10.2 m

Sc = -10.5 m

Swinging area  
Ø 986 m

VALKO

Grain Silo Quay

Sc=-10.2 m  
- 8.4  
- 7.5

Sc=-10.5 m  
- 7.7  
- 9.2

(9.5)

(7.5)

(8.5)

(4.2)

(9.5)

Harbour limit

Fishing harbour

Sc=-10.5 m

Sc=-11.0m

100 m

Tavistholmen

Vårdöudden

