



Finnish Transport
Infrastructure Agency

FAIRWAY CARD
KOKKOLA FAIRWAY

15.2.2023
N2000 (BSCD2000)

FAIRWAY DATA

Alignment and buoyage: From the pilot boarding position NW of Kokkola Lighthouse to the Deep Port in Port of Kokkola. Five lines, marked with boards, edge marks, buoys, spar buoys in combined use. Length approx. 22 km/12 nautical miles. Lateral marks, lit. The fairway continues 3 km/1.6 nautical miles to General Port in Port of Kokkola.

Dimensions: Design ship: bulk carrier 80 000 DWT, L = 240 m, B = 36,5 m, T = 14.0 m. Design draft 14,0 m. Safe clearance depth outward from Repskär -16.2 m, inward from Repskär -15.7 m in the port basin -15,7 m, -12,4 m and -10,4 m. Width 178 m (minimum width) almost throughout the fairway. The Repskär and Klädesklippan lines are eccentric with respect to the fairway area (starboard/port 80/120 m). Minimum bend radius 1200 m. Design speed in the approach 13 knots, in the entrance 10 knots.

General Port in Port of Kokkola: Design ship: bulk carrier 25000 DWT, L = 175 m, B = 25 m, T = 9,5 m. Design draft 9,5 m. Safe clearance depth -10,3 m. Design speed 10 knots.

Note. Depth information reference level is N2000 (Baltic Sea Chart Datum 2000 / BSCD 2000).

<https://www.traficom.fi/en/transport/maritime/n2000-fairway-and-nautical-chart-reform-improved>

Areas with meeting and overtaking prohibitions: The channel has one permanent area of meeting and overtaking prohibitions, look closer to Bothnia VTS Masters´ Guide.

<https://tmfg.fi/en/vts/masters-guide>

Anchorage and other special areas: There is a sheltered anchorage area, marked by cardinal marks, in the southern part of the Ykspihlaja line. Depth 14,8 m, silt bottom, diameter of turning circle is 900 m. Adjacent to the anchorage area, east of the fairway, there is an area where anchoring is prohibited.

NAVIGABILITY

Navigational conditions: Open sea from Kokkola Lighthouse to Bergbådan, exposed to westerly and north-westerly winds. From Bergbådan the fairway (dredged almost in its entirety) passes in between shoals to the port.

Ice conditions: The ice is in constant movement between Kokkola Lighthouse and Bergbådan virtually during the whole winter, between Bergbådan and Repskär in beginning of winter and spring, and it may cause buoys and spar buoys to be pressed under ice (surface). From Repskär to the port there is normally fast ice during the whole winter.

RECOMMENDATIONS (fairway and port)

Wind gauges: Marine weather observations, Tankar lighthouse.

Sea level: Pietarsaari mareograph.

TRAFFIC SERVICE

Pilotage: E-mail: pilotdispatch.bothnia@finnpilot.fi Order a pilot: www.pilotonline.fi
Tel. +358 29 5253 440. Pilot boarding position Kokkola: 64°00,52' N, 22°49,09' E. Pilotage distance 10,3 nautical miles to the Deep Port, 11,7 nautical miles to the General Port.

VTS: Bothnia VTS, VHF Channel 67. Tel. +358 20 448 7356. Email: bothnia.vts@fintraffic.fi

Tugs: Yxpila Hinaus-Bogsering Oy Ab, orders, tel. +358 10 2190 750.

PORT

Quays: Deep Port: Quay 12 length 140, safe clearance depth -15,7 m, Quay 11, length 250 m, safe clearance depth -15,7 m; Quay 10, length 250 m, safe clearance depth -15,7 m; Quay 9, length 180 m, safe clearance depth -12,4 m; Quay 8, length 100 m, safe clearance depth -10,4 m; Quay 7, length 140 m, safe clearance depth -10,4 m; Quay 6, length 160 m, safe clearance depth -10,4 m, Silverstone quay 2 length 150 m, safe clearance depth -12,4 m, Silverstone quay 3 length 120 m, safe clearance depth -12,4 m.

General Port: Quay 1, length 150 m, safe clearance depth -10,3 m; Quay 2, length 150 m, safe clearance depth -10,3 m; Quay 5 (chemical terminal), length 83 m, safe clearance depth -10,3 m. AWT, length of quay 125 m, safe clearance depth -9.1 m, basin 25 m x 125 m, max. Height 24 m.

Cargo handling: 4 forty-ton cranes, one ten-ton and one eight-ton crane in the Deep Port. Two eight-ton cranes in the General Port. One 50-ton bridge crane at the AWT. One 60-ton crane in the port area.

Harbour basins: Diameter of turning circles: in the Deep Port 600 m, in General Port at the chemical terminal 400 m, at Quay 1 and 2 and the AWT 250 m.

Contact: Port of Kokkola

Tel. +358 6 8242 400

CEO Torbjörn Witting

Tel. +358 6 8242 400

Port captain Tomas Mikkola

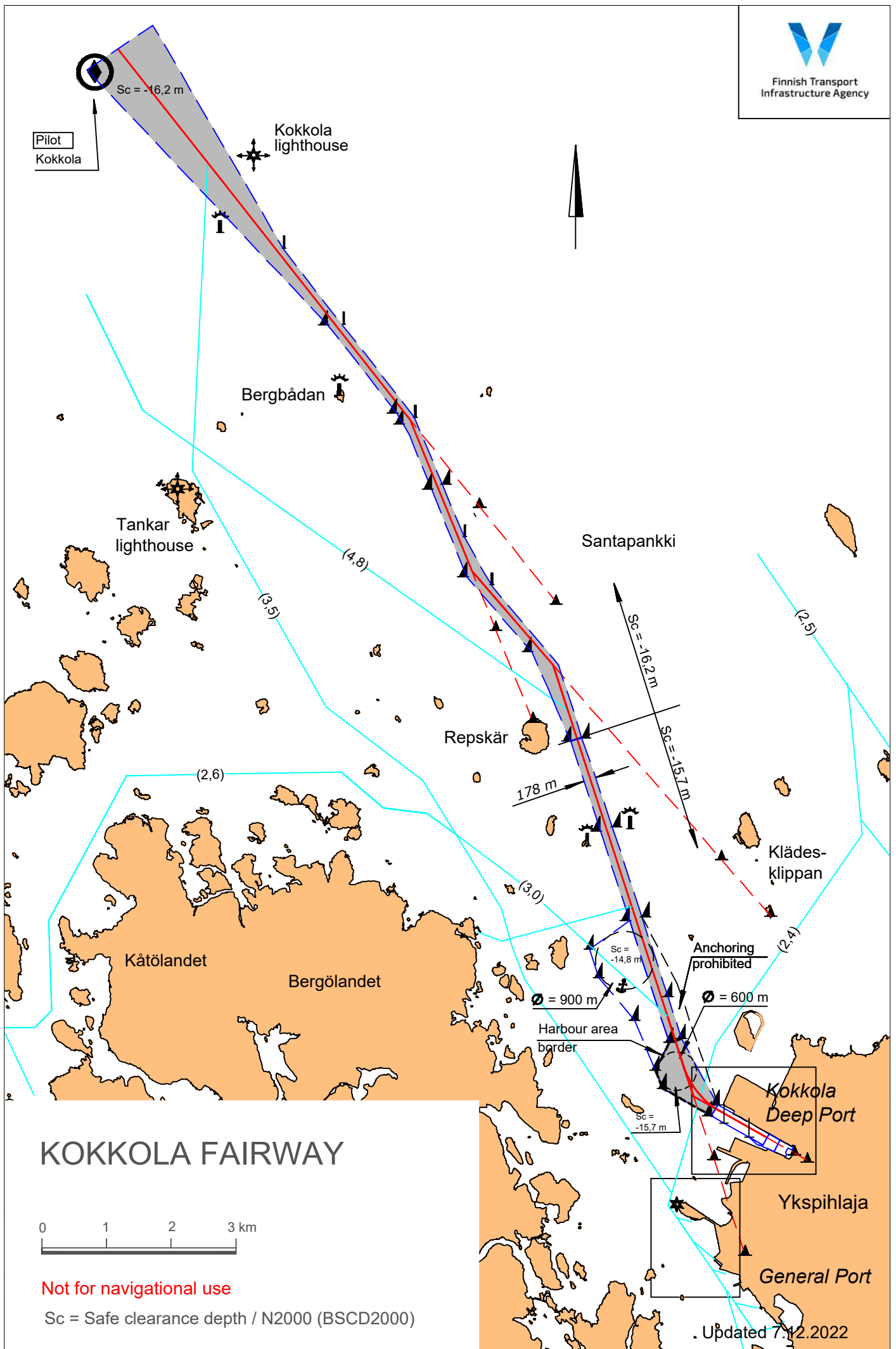
Tel. +358 50 5725 514

Port Control

Tel. +358 400 432 694



Finnish Transport
Infrastructure Agency



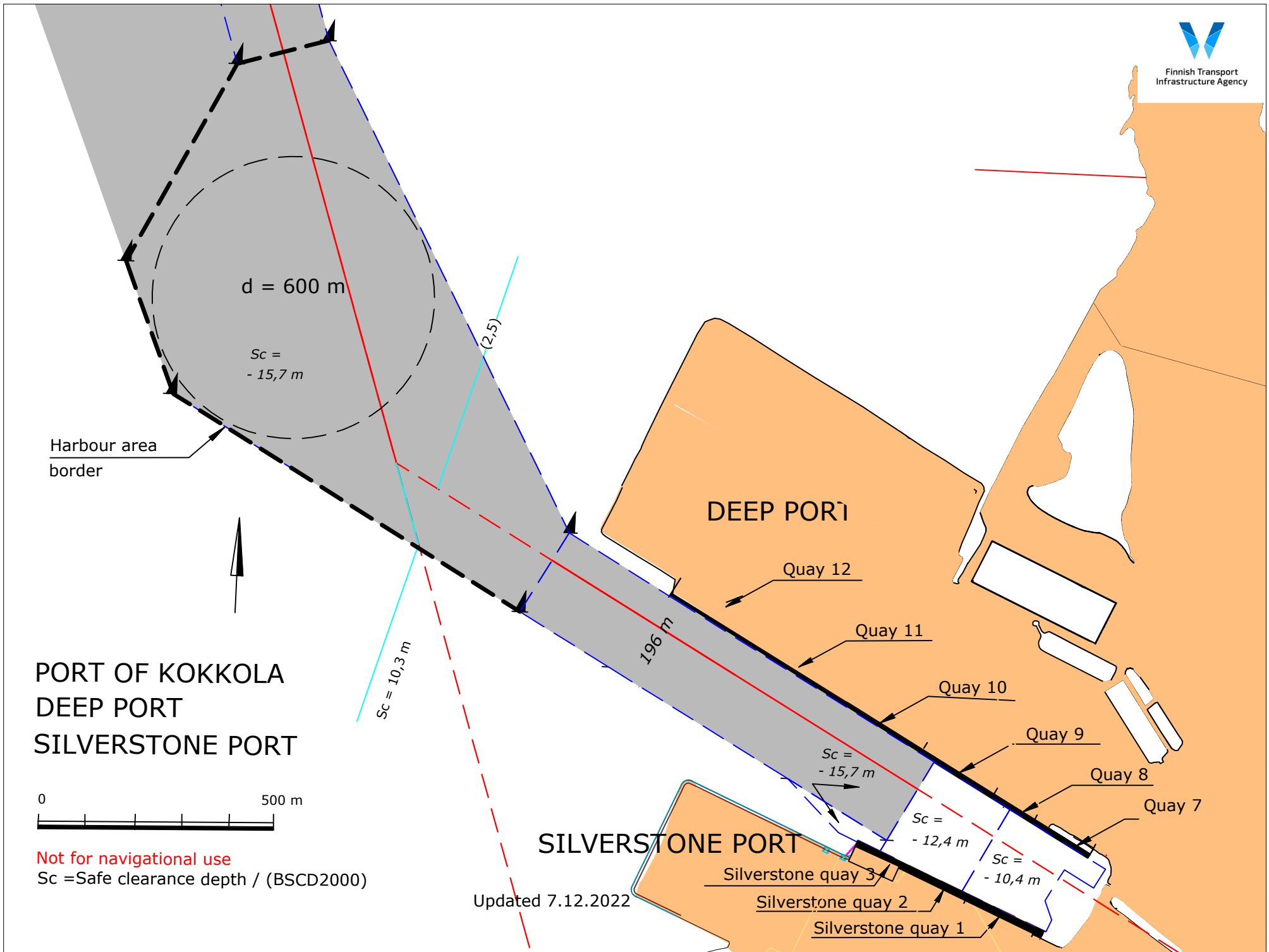
KOKKOLA FAIRWAY



Not for navigational use

Sc = Safe clearance depth / N2000 (BSCD2000)

Updated 7.12.2022



PORT OF KOKKOLA
DEEP PORT
SILVERSTONE PORT

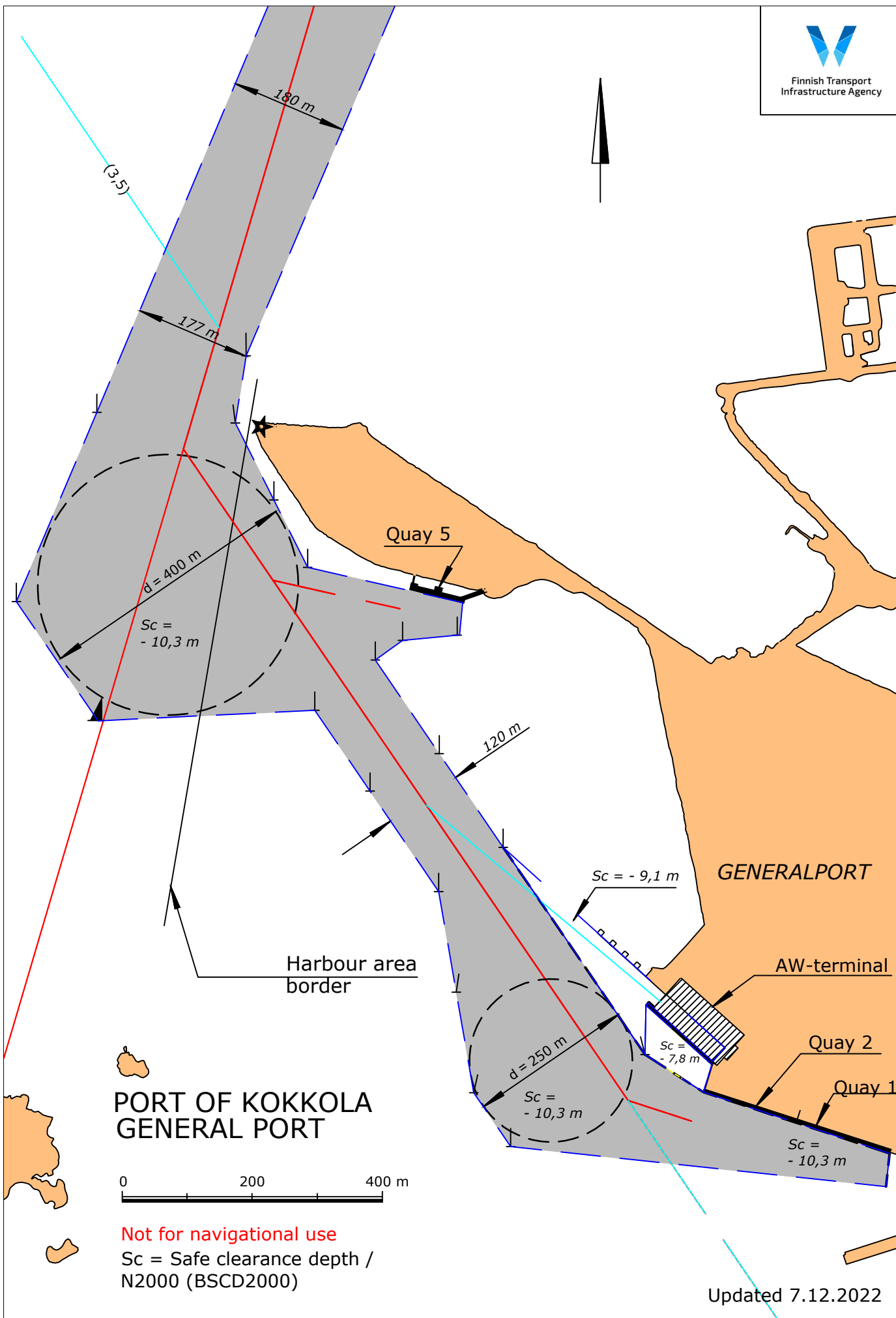


Not for navigational use
Sc = Safe clearance depth / (BSCD2000)

Updated 7.12.2022



Finnish Transport
Infrastructure Agency



PORT OF KOKKOLA GENERAL PORT

0 200 400 m

Not for navigational use
Sc = Safe clearance depth /
N2000 (BSCD2000)

Updated 7.12.2022