



KANTVIK FAIRWAY

CHANNEL DATA

Alignment and buoyage: The fairway starts from approx. 5.5 nautical miles SW of the Inkoo 2 radar mark (the eastern 9.0 m deep approach branches off from the Gulf of Finland winter route NE of sector light Snöboda) and continues W and N of Upinniemi to Kantvik harbour. Length 38.2 km/20.6 nm. Six navigation lines marked with boards. Lateral marking. Lit.

Fairway dimensions: Design vessel: bulk carrier, l = 152 m, b = 22.6 m, t = 9.2 m, DWT = 15,000. Authorised draughts 13 m / 10 m / 9.2 m and 9.0 m (eastern approach). Safe clearance depth: 15.5 m (MW2005) and 12.0 m (MW2000/MW1992) in the approach, 11.5 m (MW1992) in the entrance, 10.2 m (MW1992) in Sjövik channel and 10.2 m / 9.8 m / 9.2 m / 5.90 m (MW2012) in port. Minimum widths: channel leading to the harbour 89 m and Sjövik channel 150 m. Vessel speed 14 knots in the channel with safe clearance depth of 11.5 and 6 knots in Sjövik channel with safe clearance depth of 10.2.

Anchorage and other special areas: The anchorage area of the fairway is located SE of sector light Hästen, safe clearance depth 15.5 m. The fairway passes through a restricted area. In the restricted area, unauthorised anchoring outside the anchorage areas marked in the charts is prohibited. The fairway also passes through a firing area. More information on the firings can be found in the firings notices of the Finnish Defence Forces.

FAIRWAY NAVIGABILITY

Navigational conditions: The approach from the pilot boarding position to Upinniemi is unsheltered against southerly winds. From Upinniemi on the fairway continues to Kantvik harbour sheltered by shoals, isles and mainland.

Ice conditions: Very variable ice conditions. The fairway can be open almost all winter or there can be formation of thin ice. Southerly winds may cause ridging in the fairway.

NB: There are also ships sailing in the fairway and in its vicinity that do not transmit AIS data.

RECOMMENDATIONS (fairway and harbour)

Vessel-specific recommendations: Maximum vessel length 180 m.

Wind: Vessels over 15,000 DWT: the critical wind speed is 15 m/s, other matters to be taken into account include the ship size, equipment and controllability, as well as whether the ship is known from earlier visits.

Visibility: Vessels over 15,000 DWT: daylight and minimum visibility of 4 km.

Wind gauges: Bågaskär and Mäkiluoto (wind gauges of the Finnish Meteorological Institute).

TRAFFIC SERVICE

Pilotage: Email: pilotorder.south@finnpilot.fi. Order from: www.pilotonline.fi.

Telephone: +358 400 907 977, fax: +358 29 52 53010. Pilot boarding positions: Porkkala S, 59°53,60' N / 24°11,68' E, pilotage distance 13 nautical miles; Porkkala N, 59°55,66' N / 24°14,20' E, pilotage distance 10.5 nautical miles.

VTS: Helsinki VTS, VHF Channel 09. Tel. +358 20 48 5391, e-mail: helsinki.vts@fintraffic.fi, supervisors.hki@fintraffic.fi

Tugs: Privately owned tugs.

PORT

Quays: North Quay, length 110 m, safe clearance depth 9.8 m. Small Quay, length 50 m, safe clearance depth 5.9 m. South Quay length 60 m, safe clearance depth 9.2 m. The reference level for safe clearance depths of the quays is MW2012.

Cargo handling: A 8 t crane on North Quay, suited for use as a grab bucket crane or hook crane, and a multipurpose crane and conveyor. A multipurpose crane on the South Quay.

Harbour: Kantvik Harbour/Oy Kantvik Shipping Ltd, Operations Manager Thomas Nyberg tel. +358 40 735 2753 thomas.nyberg@inkooshipping.fi. Marine VHF channel 12 used for mooring/casting off.

CONTACT INFORMATION

Oy Kantvik Shipping Ltd

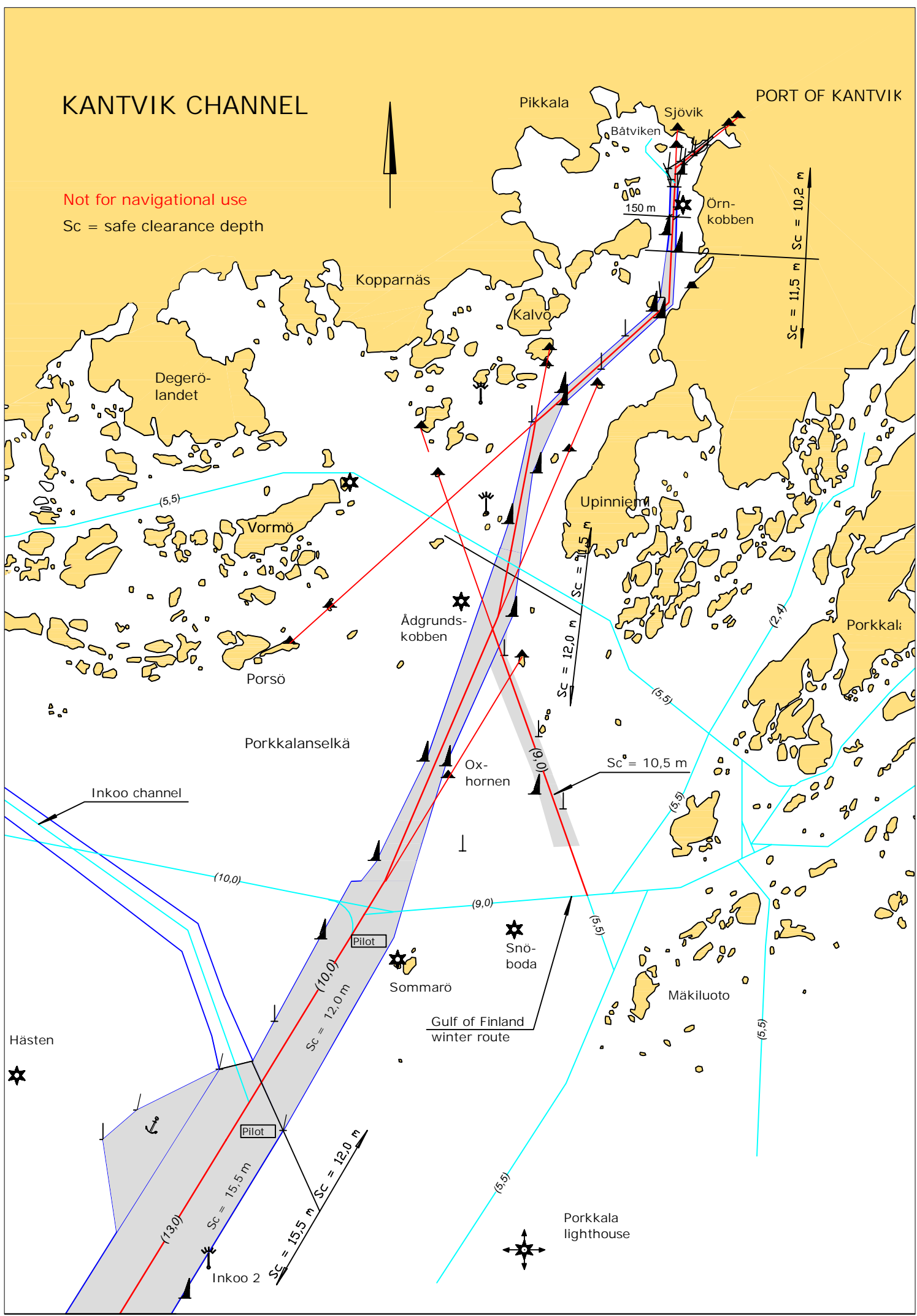
Telephone +358 50 387 3672, Fax +358 9 298 5163, Email: kantvik@inkooshipping.fi

KANTVIK CHANNEL

PORT OF KANTVIK

Not for navigational use

Sc = safe clearance depth



Kantvik harbour

0 100m 200m 300m 400m

Not for navigational use

$Sc \hat{=}$ safe clearance depth



Sjövik

Suomen sokeri Oy Ab

$Sc = 5,90\text{ m}$

Small Quay

North Quay

$Sc = 9,8\text{ m}$

$Sc = 9,2\text{ m}$

South Quay

89 m

(9,2)

$Sc = 10,2\text{ m}$

Strömsby

(5,5)

$Sc = 10,2\text{ m}$

Harbour area limit

