



# Väylävirasto Trafikledsverket

FAIRWAY CARD

2.12.2022

INKOO FAIRWAY (13 m)

## CHANNEL DATA

Alignment and buoyage: The fairway starts at open sea S of the Häststen beacon and continues to the port of Inkoo. Length approx. 36.8 km/20 M. 5 navigation lines, marked with leading beacons and partly with leading daytime lights. Lateral marking from the edge mark Inkoo 3 onwards. Lit.

Fairway dimensions: Design vessel: Panamax type 70,000 dwt vessel, l = 225 m, b = 34 m, t = 13.0 m. Authorised draught 13.0 m, safe clearance depths (MW): -15.5 m in the approach, -15.0 m in the entrance, -14.2 m along the lines outside the harbour. Minimum width 140 m. Turning radius 2000 m, turning radius before the harbour 1600 m. Fairway dimensions verified in towing assistance and for an LNG vessel operating in limited conditions (l=300 m, b=50 m and t=12.0 m).

Anchorage and other special areas: Anchorage possible in the outer part of the fairway, in the anchorage area SE of the sector light Häststen. In the fairway area at Jakob Ramsjö and Skämmö and in the secured supplementary area on both sides (safe clearance depth = -13.20 m MW2022), there is a turning circle with a diameter of 450 metres. The terminal vessel and the refill vessels are turned in this turning circle and towed stern first to the harbour. For towing operations, secured supplementary areas with a safe clearance depth of -10.20 m MW2022 have been made to complement both of the above-mentioned secured supplementary areas.

## FAIRWAY NAVIGABILITY

Ice conditions: The fairway is open almost all winter.

RECOMMENDATIONS (Note. The recommendations apply only to Panamax type vessels and vessels larger than that.)

Speed recommendations: To maintain a safe underkeel clearance, the recommended speeds in dredged areas are: Bay of Fagervik, under 18.5 km/h, and at the south end of the isle Jakob Ramsjö approx. 15 km/h.

Wind recommendations: Maximum wind speed 15 m/s.

Visibility recommendations: Daylight and minimum visibility of 4 km.

Wind gauges: Bågaskär and Mäkiluoto (wind gauges of the Finnish Meteorological Institute).

## TRAFFIC SERVICE

Pilotage: Email: [pilotorder.south@finnpilot.fi](mailto:pilotorder.south@finnpilot.fi). Order from: [www.pilotonline.fi](http://www.pilotonline.fi).  
Phone: +358 (0) 400 907 977, fax: +358 (0) 29 52 53010. Pilot boarding position 59°53,6', 24°12'.  
Pilotage distance 12 M.

VTS: Helsinki VTS, VHF Channel 09. Tel. +358 (0) 204 485 391, [helsinki.vts\(at\)finntraffic.fi](mailto:helsinki.vts(at)finntraffic.fi) and [supervisors.hki\(at\)finntraffic.fi](mailto:supervisors.hki(at)finntraffic.fi).

Towage: Privately owned tugs. To be booked through the shipping agent. Advance booking 24/12/6 hours, booking at least 3 hours prior to departure/arrival.

## PORT

Quays: Fortum: quay No. 1, length 170 m, safe clearance depth -10.9 m (MW2022); quay No. 2, length 240 m, safe clearance depth -14.2 m (MW 2022).

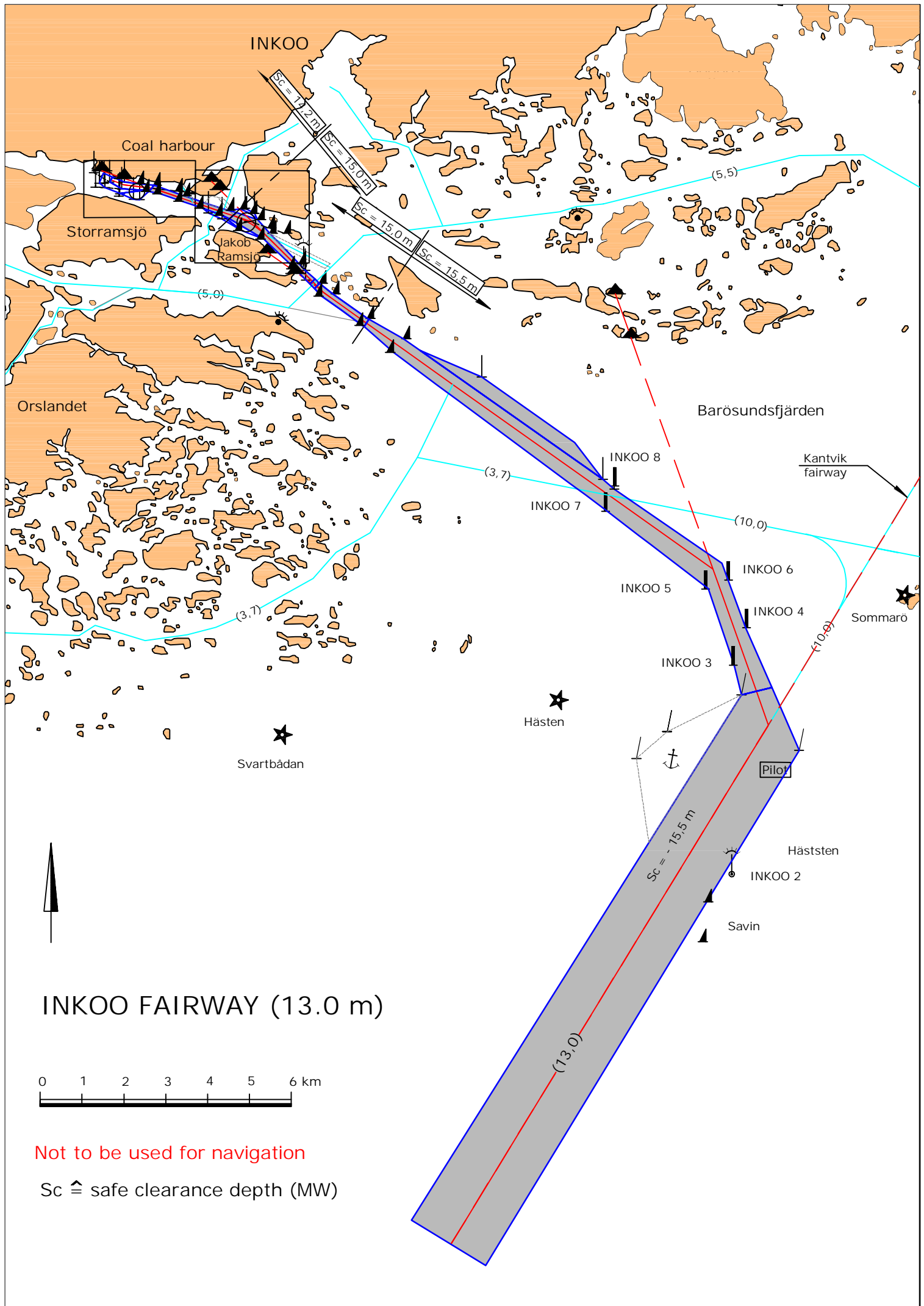
Inkoo Shipping: quay No. 3, length 225 m, safe clearance depth -8.5 m; quay No. 4, length 145 m, safe clearance depth -8.5 m.

Cargo handling: Fortum quay No. 1: Two 10 t cranes; Inkoo Shipping quay 3: 10 t crane on rail, quay for loading and unloading barges using side ramp; quay No. 4: bow/stern ramp, 3 mobile multipurpose cranes.

Harbour basin: Diameter of swinging area 370 m, safe clearance depth -9.5 m.

CONTACT INFORMATION

Inkoo Shipping Oy Ab, Inkoo  
Tel. +358 207 631 500  
Email: inkooshp(at)inkooshipping.fi



INKOO

Coal harbour

Storramsjö

Jakob Ramsjö

Orslandet

Barösundsfjärden

Kantvik fairway

Sommarö

Hästen

Svartbådan

Hästen

INKOO 2

Savin

INKOO 5

INKOO 6

INKOO 4

INKOO 3

INKOO 8

INKOO 7

Pilot

Sc = 17.2 m

Sc = 15.0 m

Sc = 15.0 m

Sc = 15.5 m

Sc = 15.5 m

(13,0)

(5,5)

(5,0)

(3,7)

(10,0)

(3,7)

(10,0)

