



Finnish Transport
Infrastructure Agency

FAIRWAY CARD

20.8.2021

INKOO FAIRWAY (13 m)

CHANNEL DATA

Alignment and buoyage: The fairway starts S of the Häststen beacon and continues, 13.0 m deep, to the port of Inkoo. Length approx. 34 km/18 M. 6 navigation lines, marked by boards. Lateral marking from the edge mark Inkoo 3 onwards. Lit.

Dimensions: Design vessel: Panamax type 70,000 dwt vessel, l = 230 m, b = 32 m, t = 13.0 m. Authorised draught 13.0 m, safe clearance depth (MW80) -15.5 m in the approach, -15.0 m in the entrance, -14.2 m along the lines outside the harbour. Minimum width 150 m. Turning radius 2000 m.

Anchorage areas etc.: Anchorage possible in the outer part of the fairway, in the anchorage area SE of the sector light Häststen.

NAVIGABILITY

Ice conditions: The fairway is open almost throughout the year.

RECOMMENDATIONS (Note. Apply to Panamax type vessels and vessels larger than that only.)

Speed: To maintain a safe underkeel clearance, the recommended speeds in dredged areas are: Bay of Fagervik, max. 18.5 km/h, and at the south end of the isle Jakob Ramsjö approx. 15 km/h.

Wind: Maximum wind speed 15 m/s.

Visibility: Daylight and minimum visibility of 4 km.

Wind gauges: Bågaskär and Mäkiluoto (wind gauges of the Finnish Meteorological Institute).

TRAFFIC SERVICE

Pilotage: e-mail pilotorder.south@finnpilot.fi. Order from: www.pilotonline.fi. Tel. +358 (0) 400 907 977, fax: +358 (0) 29 52 53010. Pilot boarding position 59°53,6', 24°12'. Pilotage distance 12 M.

VTS: Helsinki VTS, VHF Channel 09. Tel. 0204 48 5391, [helsinki.vts\(at\)finntraffic.fi](mailto:helsinki.vts(at)finntraffic.fi) and [supervisors.hki\(at\)finntraffic.fi](mailto:supervisors.hki(at)finntraffic.fi).

Towage: Privately owned tugs. To be booked through the shipping agent. Advance booking 24/12/6 hours, booking at least 3 hours prior to departure/arrival.

PORT

The port consists of two parts: Fortum Oyj Abp's Inkoo power plant harbour and Inkoo Shipping Oy Ab's harbour.

Quays: Fortum: quay No. 1, length 170 m, safe clearance depth -10.97 m; quay No. 2, length 240 m, safe clearance depth -14.3 m (MW 2000).

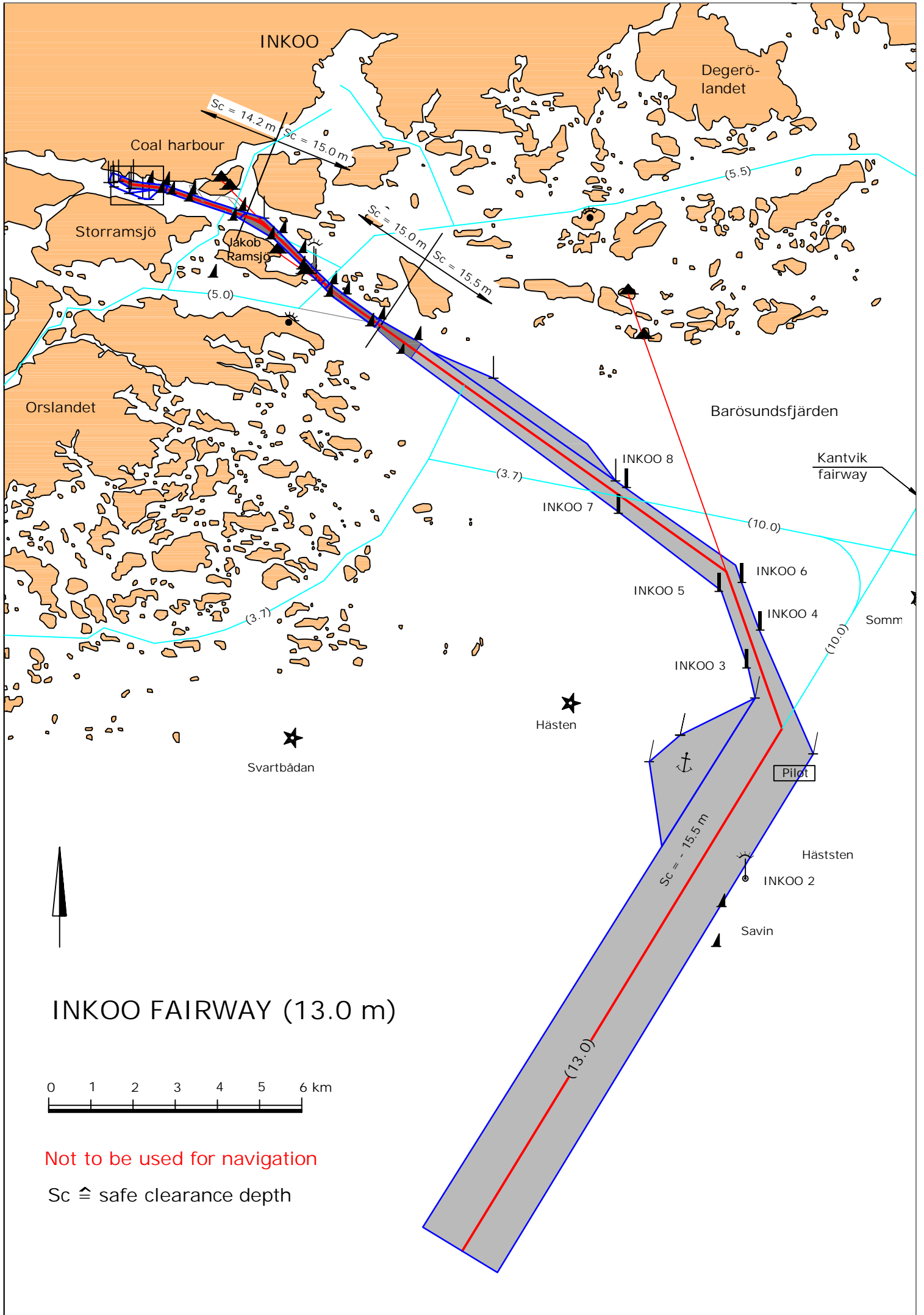
Inkoo Shipping: quay No. 3, length 225 m, safe clearance depth -8,5 m; quay No. 4, length 145 m, safe clearance depth -8.5 m.

Cargo handling: Quays No. 1 and 2: 25 t and 3 x 10 t cranes; quay No. 3: 10 t crane on rail, quay for loading and unloading barges using side ramp; quay No. 4: bow/stern ramp, 2 mobile multipurpose cranes.

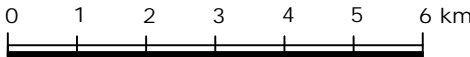
Harbour basin: Diameter of swinging area 400 m, safe clearance depth -9.5 m.

CONTACT

Inkoo Shipping Oy Ab Inkoo
Tel. +358 207 631 500
e-mail: inkooshp(at)inkooshipping.fi



INKOO FAIRWAY (13.0 m)



Not to be used for navigation

Sc ≙ safe clearance depth

