



Finnish Transport  
Infrastructure Agency

FAIRWAY CARD

18.11.2021

GULF OF FINLAND WINTER ROUTE

HELSINKI -ORRENGRUND

CHANNEL DATA

Alignment and buoyage: The 9.0 m deep coastal fairway between Helsinki and Orrengrund starts in the entrance to Helsinki and goes W and S of Emäsalo past Pellinki to the bay Orrengrunds-fjärden and further to a position NE of Orrengrund where it meets the 10.0 m deep Orrengrund-Kotka channel. The fairway is marked by boards. Length approx. 109.7 km/59.2 M. Cardinal marks. Lit.

Dimensions: Authorised draught 9.0 m. Safe clearance depth (MW 2000) -10.4 m. Turning radius 900 m.

Anchorage areas etc.: Anchoring in the anchorage area of the Orrengrund-Kotka channel, SW of Tainio Lighthouse.

NAVIGABILITY

The fairway is more sheltered against winds than the fairway farther out at sea and provides an easier route to the ports along the southern coast of Finland in difficult ice conditions.

Navigational conditions: The section from Helsinki to S of Emäsalo is very well sheltered. The rest of the fairway is dotted by a few islands only and periodically fairly open to southerly winds.

Ice conditions: Southerly winds may cause ridging in the fairway.

RECOMMENDATIONS

Speed:

Visibility:

Wind gauges: At Harmaja (wind gauges of the Finnish Meteorological Institute).

TRAFFIC SERVICE

Pilotage: e-mail [pilotorder.south@finnpilot.fi](mailto:pilotorder.south@finnpilot.fi). Order form [www.pilotonline.fi](http://www.pilotonline.fi).  
Tel. +358 (0) 400 907 977, fax: +358 (0) 29 52 53010. Pilot boarding position 60°04.3', 24°57.7'.

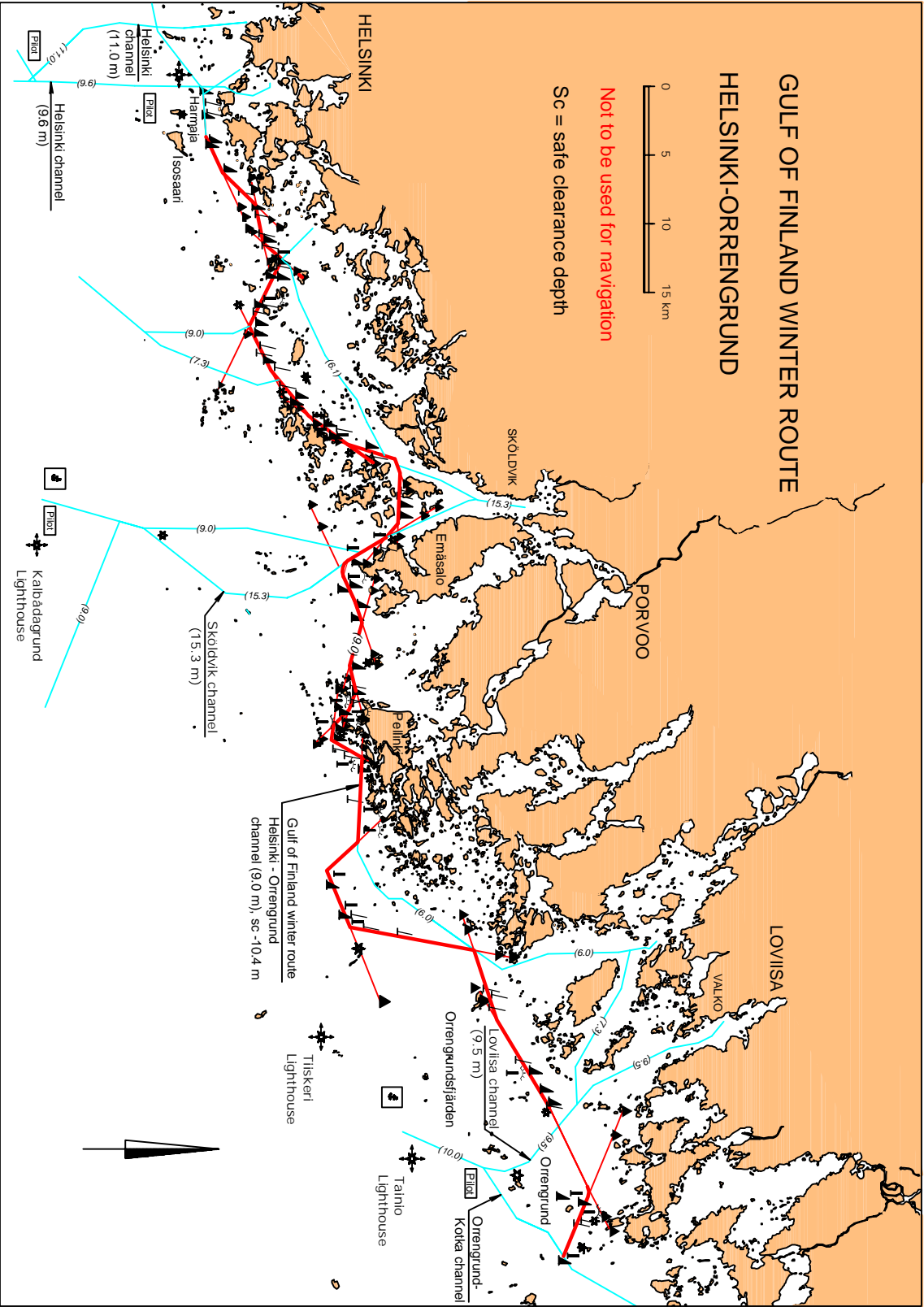
VTS: Helsinki VTS, Helsinki VTS sector 1 VHF channel 71, Helsinki VTS sector 2 VHF channel 9, Kotka VTS VHF channel 67. Tel. +358 20 448 5391, [helsinki.vts@finntraffic.fi](mailto:helsinki.vts@finntraffic.fi), [kotka.vts@finntraffic.fi](mailto:kotka.vts@finntraffic.fi) and [supervisors.hki@finntraffic.fi](mailto:supervisors.hki@finntraffic.fi).

Towage: Privately owned tugs.

# GULF OF FINLAND WINTER ROUTE HELSINKI-ORENGRUND



**Not to be used for navigation**  
Sc = safe clearance depth



HELSINKI  
Helsinki channel (11.0 m)  
Helsinki channel (9.6 m)

Pilö

Pilö

Helsingin saari

Skoldvik channel (15.3 m)

Skoldvik channel (9.0 m)

Skoldvik channel (7.3 m)

Skoldvik channel (9.0 m)

Skoldvik channel (15.3 m)

Skoldvik channel (9.0 m)

Skoldvik channel (15.3 m)

Skoldvik channel (9.0 m)

Skoldvik channel (15.3 m)

Skoldvik channel (9.0 m)

Skoldvik channel (15.3 m)

Skoldvik channel (9.0 m)

Skoldvik channel (15.3 m)

Skoldvik channel (9.0 m)

Skoldvik channel (15.3 m)

Skoldvik channel (9.0 m)

Skoldvik channel (15.3 m)

Skoldvik channel (9.0 m)

Skoldvik channel (15.3 m)

Skoldvik channel (9.0 m)

Skoldvik channel (15.3 m)

Skoldvik channel (9.0 m)

Kalbadagrund Lighthouse

Pilö

Pilö

Skoldvik channel (15.3 m)

Skoldvik channel (9.0 m)

Skoldvik channel (15.3 m)

Skoldvik channel (9.0 m)

Skoldvik channel (15.3 m)

Skoldvik channel (9.0 m)

Skoldvik channel (15.3 m)

Skoldvik channel (9.0 m)

Skoldvik channel (15.3 m)

Skoldvik channel (9.0 m)

Skoldvik channel (15.3 m)

Skoldvik channel (9.0 m)

Skoldvik channel (15.3 m)

Skoldvik channel (9.0 m)

Skoldvik channel (15.3 m)

Skoldvik channel (9.0 m)

Skoldvik channel (15.3 m)

Skoldvik channel (9.0 m)

Skoldvik channel (15.3 m)

Skoldvik channel (9.0 m)

Skoldvik channel (15.3 m)

Skoldvik channel (9.0 m)

Skoldvik channel (15.3 m)

Skoldvik channel (9.0 m)

Skoldvik channel (15.3 m)

Skoldvik channel (9.0 m)

Gulf of Finland winter route  
Helsinki - Orengrund channel (9.0 m), sc -10.4 m

Tiskeri Lighthouse

Pilö

Pilö

Orengrund channel (9.5 m)

Orengrund channel (7.3 m)

Orengrund channel (9.5 m)

Orengrund channel (7.3 m)

Orengrund channel (9.5 m)

Orengrund channel (7.3 m)

Orengrund channel (9.5 m)

Orengrund channel (7.3 m)

Orengrund channel (9.5 m)

Orengrund channel (7.3 m)

Orengrund channel (9.5 m)

Orengrund channel (7.3 m)

Orengrund channel (9.5 m)

Orengrund channel (7.3 m)

Orengrund channel (9.5 m)

Tainio Lighthouse

Pilö

Pilö

Orengrund-Kotka channel

Orengrund channel (10.0 m)

Orengrund channel (7.3 m)

Orengrund channel (10.0 m)

Orengrund channel (7.3 m)

Orengrund channel (10.0 m)

Orengrund channel (7.3 m)

Orengrund channel (10.0 m)

Orengrund channel (7.3 m)

Orengrund channel (10.0 m)

Orengrund channel (7.3 m)

Orengrund channel (10.0 m)

Orengrund channel (7.3 m)

LOVIISA  
VALKO

PORVOO

SKOLDVIK

HELSINKI