

FAIRWAY CARD

**FLÄCKGRUND-FÖRBY CHANNEL**

**1.7.2021**

CHANNEL DATA

**Alignment and buoyage:** The Fläckgrund-Förby channel starts at the Hanko bypass channel west of Fläckgrund sector light and continues as a 9.0 m channel in a south-north direction west of Padva and east of Kimito to Förby harbour. Length approx. 30.5 km/16.5 nm. 7 lines marked with sector lights and boards. Lateral marking. Lit.

**Dimensions:** design ship; 12,000 dwt bulk carrier, l = 160 m, b = 21 m, t = 9.0 m. Maximum authorised draught 9.0 m. Safe clearance depth (MW2000) -11.0 m. Minimum width 135 m. Minimum turning radius 750 m.

NAVIGABILITY

**Navigational conditions:** In the outer fairway navigation can be hampered by hard S-W winds and heavy seas. From Skataudden to Förby harbour the fairway is sheltered by islands.

The narrowest part of the fairway is NW of Liesniemi, width 135 m. Vessels with a maximum draught should take the suction effect into consideration.

**Ice conditions:** Southerly winds can at times cause ridges in the outer fairway. During normal winters there is fast ice between Stubbkål and the harbour.

RECOMMENDATIONS (fairway and harbour)

**Wind gauge:** Hanko pilot station.

TRAFFIC SERVICE

**Pilotage:** E-mail: [pilotorder.south@finnpilot.fi](mailto:pilotorder.south@finnpilot.fi). Order form: [www.pilotorder.fi](http://www.pilotorder.fi).  
Tel.: +358 (0) 20754 6151, fax: +358 (0) 20754 6161. Pilot boarding positions: (same as for Hanko channel, 13.0 m) inner 59°46.1', 23°01', outer 59°43', 23°05', off chart. Pilotage distance 27.4 nm.

**VTS:** Archipelago VTS, VHF Channel 71. Tel. 0204 48 6521. E-post: [archipelago.vts@fintraffic.fi](mailto:archipelago.vts@fintraffic.fi)  
Hanko VTS, VHF Channel 67. Tel. 0204 48 5388. E-post: [hanko.vts@fintraffic.fi](mailto:hanko.vts@fintraffic.fi)

**Tugs:** Privately owned tugs available.

PORT

**Quays:** length 106 m, safe clearance depth 10.0 m. Barge ramp.

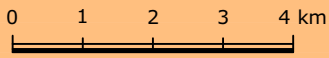
**Cargo handling:** with discharge pipes into tanks.

**Harbour basin:** Diameter 480 m, safe clearance depth -11.0 m.

CONTACTS

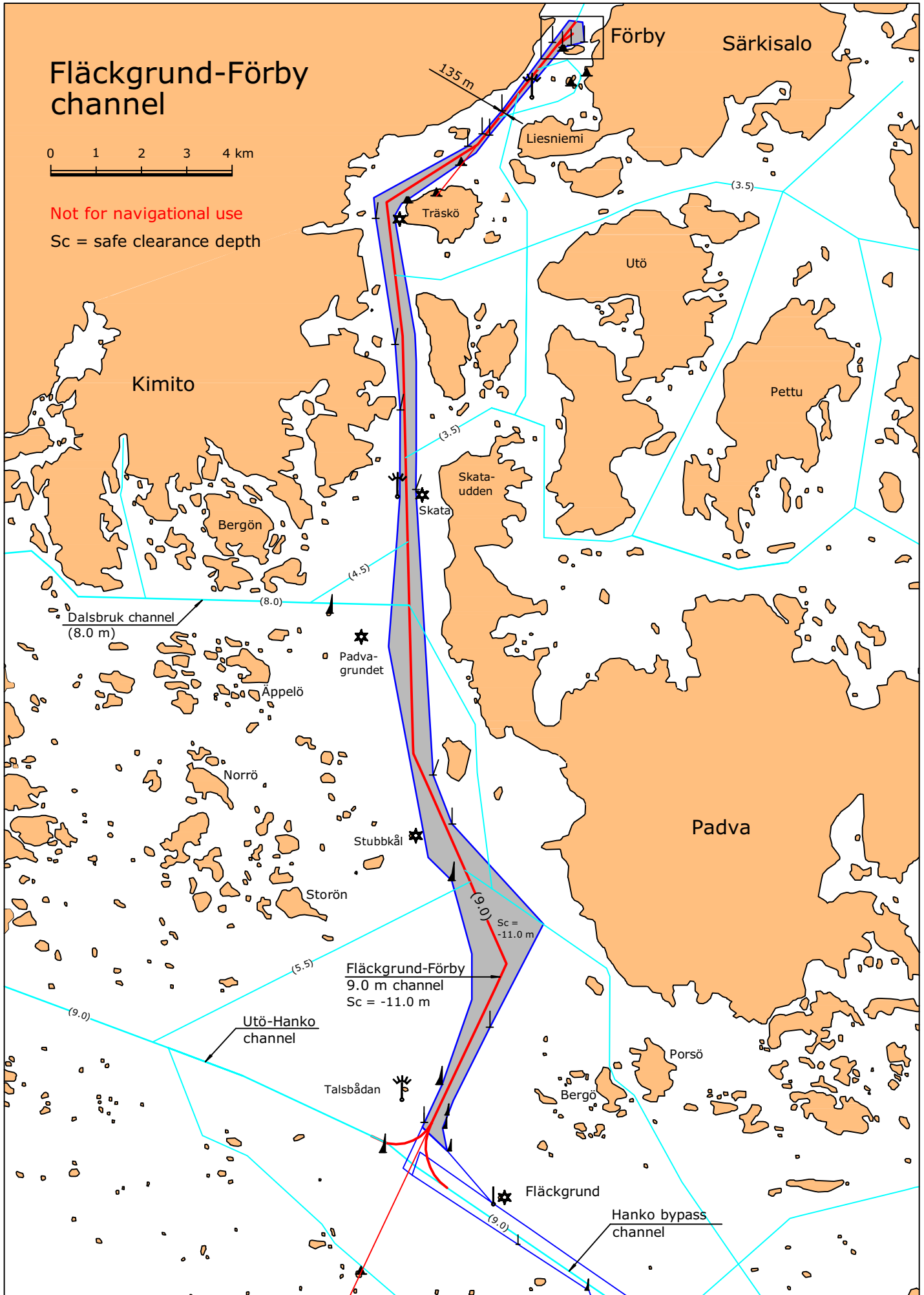
**Port:** Omya Oy Förby harbour tel. +358 (0)2 77571 fax +358 (0)2 775 7594

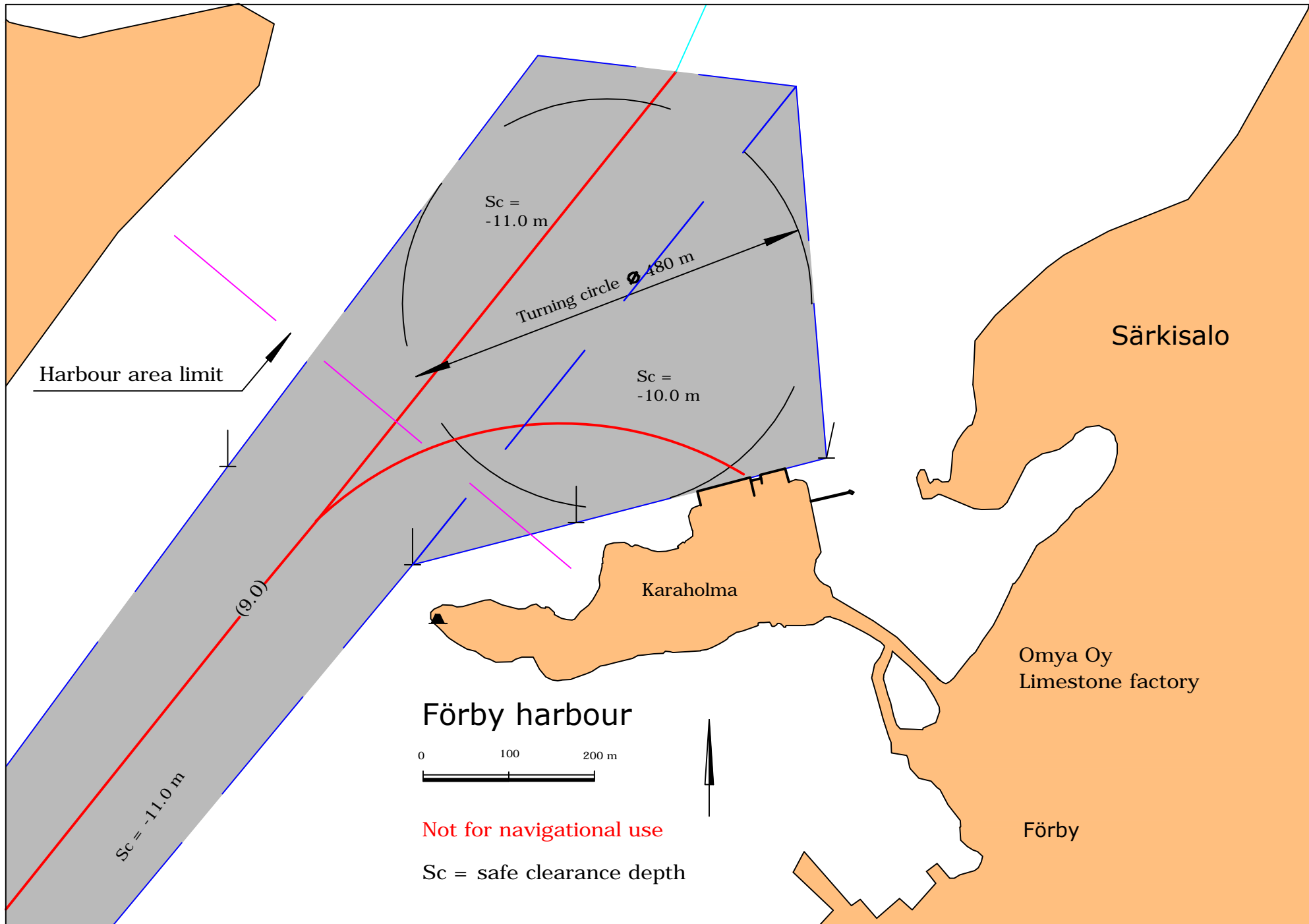
# Fläckgrund-Förby channel



Not for navigational use

Sc = safe clearance depth





Harbour area limit

$Sc = -11.0$  m

Turning circle  $\varnothing$  480 m

$Sc = -10.0$  m

(9.0)

$Sc = -11.0$  m

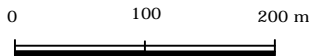
Karaholma

Särkisalo

Omya Oy  
Limestone factory

Förby

Förby harbour



Not for navigational use

$Sc =$  safe clearance depth