

**DALSBRUK CHANNEL (8.0 M)**

CHANNEL DATA

**Alignment and buoyage:** Dalsbruk channel (8.0 m) starts at the Fläckgrund-Förby channel W of Padva island and continues in an east-west direction to Dalsbruk harbour. Length approx. 17.2 km/9.3 nm. Six lines marked with boards. Lateral marking. Lit.

**Dimensions:** Design ship: pusher barge, l = 167 m, b = 27 m, t = 6.7 m. Maximum authorised draught 8.0 m. Safe clearance depth (MW2000) -9.0 m. Minimum width 90 m in the narrow passage of Märaströmmen. Minimum turning radius 800 m. Design speed for pusher barges 14.0 knots and for vessels with maximum draught 8.0 knots.

**Anchorage areas etc.:** Anchorage and turning area at the port entrance between the islands Yttre Sirkholmen and Högholmen. The area can also be used as a waiting area. Lateral marking. Safe clearance depth 9.0 m, the centre is about 90 m from the fairway centre line.

NAVIGABILITY

**Navigational conditions:** The whole fairway is sheltered by mainland, islands and skerries. The narrowest part of the fairway is the narrow passage at Märaströmmen, width 90 m. Vessels with maximum draught should take the suction effect into consideration.

**Ice conditions:** During normal winters there is fast ice in the fairway.

RECOMMENDATIONS (fairway and harbour)

**Wind gauge:** Hanko pilot station.

TRAFFIC SERVICE

**Pilotage:** E-mail: [pilotorder.south@finnpilot.fi](mailto:pilotorder.south@finnpilot.fi). Order form [www.pilotorder.fi](http://www.pilotorder.fi).  
Tel.: +358 (0) 20754 6151, fax: +358 (0) 20754 6161. Pilot boarding positions: (same as for Hanko channel, 13.0 m) inner 59°46.1', 23°01', outer 59°43', 23°05', off chart. Pilotage distance 27.9 nm.

**VTS:** Archipelago VTS, VHF Channel 71. Tel. 0204 48 6521. E-post: [archipelago.vts@fintraffic.fi](mailto:archipelago.vts@fintraffic.fi)  
Hanko VTS, VHF Channel 67. Tel. 0204 48 5388. E-post: [hanko.vts@fintraffic.fi](mailto:hanko.vts@fintraffic.fi)

**Tugs:** Privately owned tugs.

PORT

**Quays:** length 66 m, safe clearance depth 9.0 m.

**Cargo handling:** Crane and trucks.

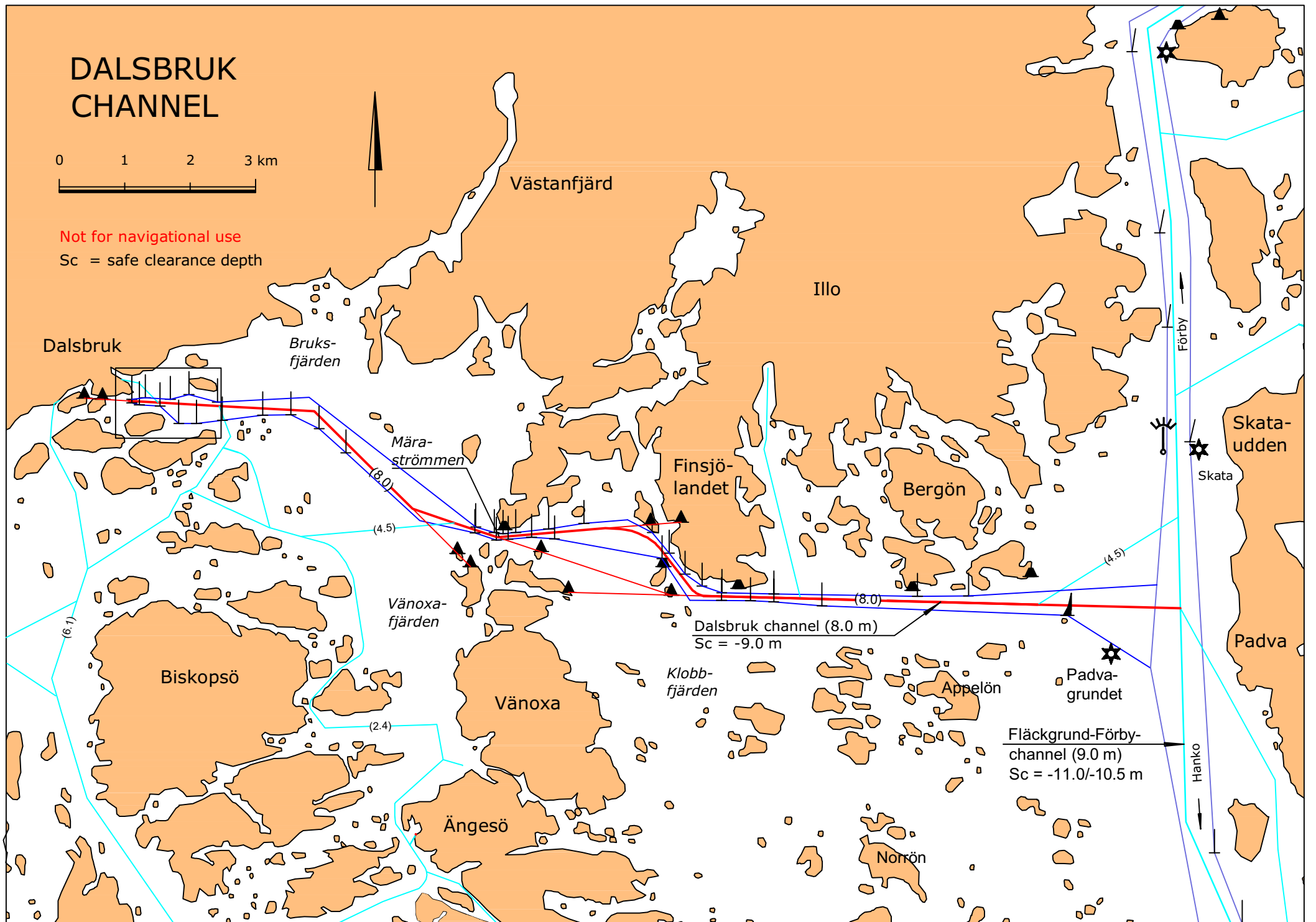
**Harbour basin:** Diameter 400 m, safe clearance depth -9.0 m.

**Port:** Port of Dalsbruk, Seaport Logistics Oy  
The harbour master Harri Kiviaho tel 0447244340, e-mail: [harri.kiviaho@seaportlogistisc.fi](mailto:harri.kiviaho@seaportlogistisc.fi)

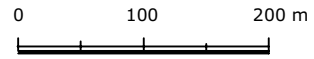
# DALSBRUK CHANNEL

0 1 2 3 km

Not for navigational use  
Sc = safe clearance depth



# DALSBRUK HARBOUR



Not for navigational use

Sc = safe clearance depth

