

CHANNEL DATA

Alignment and buoyage: The fairway starts S of Nahkiainen Lighthouse, crosses the Raahe channel and continues northwards to Hailuoto approach – Oulu 1. West-easterly channel joins the fairway S of Merikallat. The fairway continues W of the lighthouse Oulu 1 to a point E of the lighthouse Kemi 1 where it meets Kemi Ajos channel. 9 navigation lines. Length approx. 110 km / 59.4 nautical miles. Cardinal marks.

Dimensions: Nahkiainen – Oulu 1: design vessel: L= 210 m, B= 30 m, T= 10.0 m. Designed draught 10.0 m, safe clearance depth -11,8 m, and to the channel joins a fairway area approach of Raahe with sc -11,8 m, S of Merikallat a fairway area with sc -11,8 m and N of Merikallat fairway area with sc -11,4 m. Minimum width 250 m, turning radius 1000 m. Design speed in the channel 12 knots.

Oulu 1 – Kemi 1: L= 165 m, B= 23 m, T= 8.0 m. Designed draught 8.0 m, safe clearance depth -9,8 m. Turning radius 1000 m. Design speed in the channel 12 knots.

Note: Depth information reference level is N2000 (Baltic Sea Chart Datum 2000 / BSCD2000).
<https://www.traficom.fi/en/transport/maritime/n2000-fairway-and-nautical-chart-reform-improved>

Anchorage areas etc.: The channel is without separate anchorage areas.

NAVIGABILITY

Navigational conditions: The fairway is open sea area and unsheltered against all winds. Heavy seas.

The narrowest passage, only 250 m wide, is located approx. 3 km SW of Oulu 1 lighthouse.

Ice conditions: Drift ice throughout the fairway in early and late winter. Buoys may be pressed under the ice surface. Ridging in mid-winter.

RECOMMENDATIONS

Speed: Vessels sailing at design draught should beware of the squat-effect in the narrow passage 3 km SW of the Oulu 1 lighthouse.

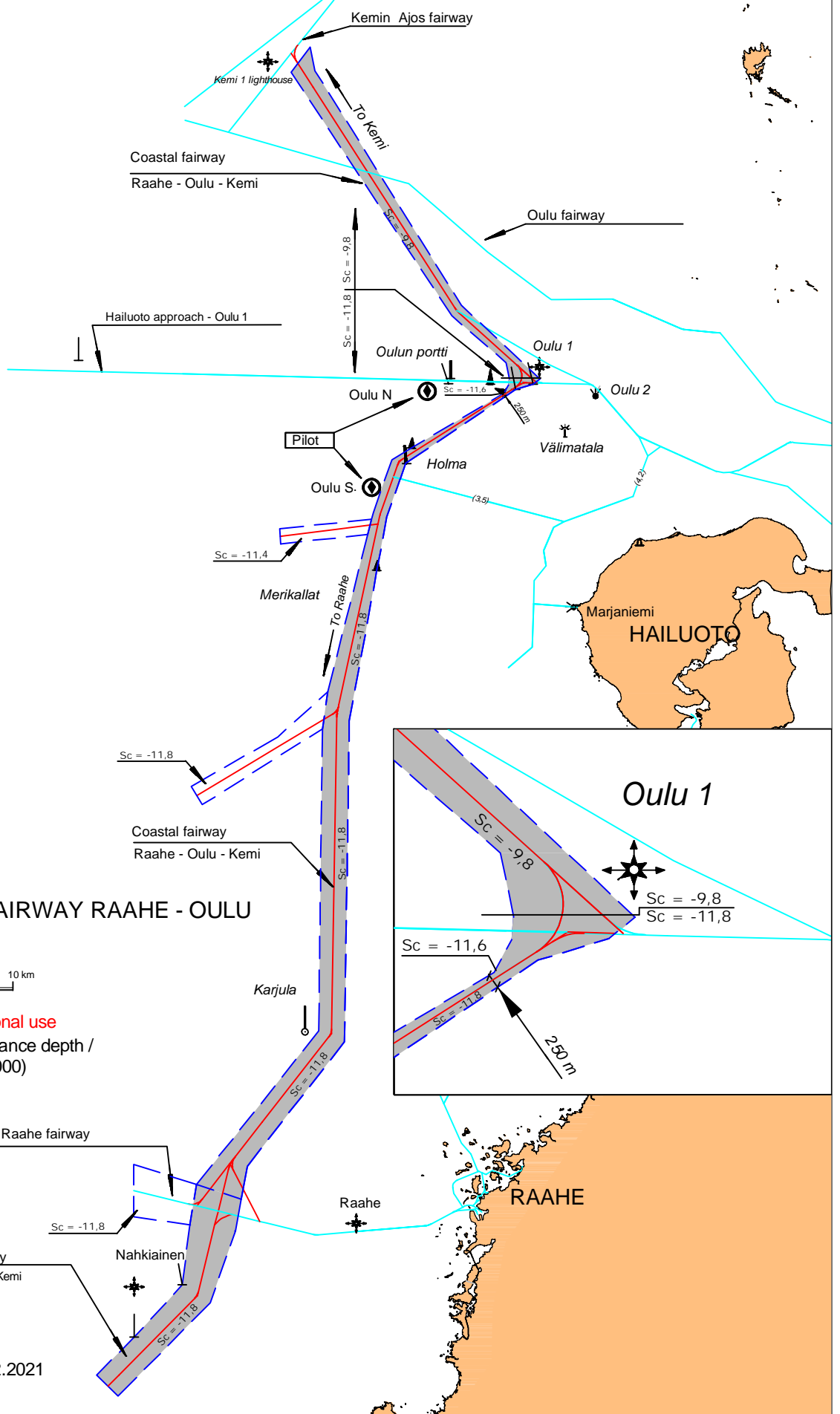
Wind gauges: Marine weather observations, Raahe Nahkiainen, Hailuoto Marjaniemi, Kemi 1 lighthouse.

Sea level: Raahe mareograph

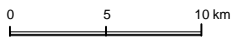
TRAFFIC SERVICE

Pilotage: e-mail pilotorder.west@finnpilot.fi. Order a pilot: www.pilotonline.fi
Tel. +358 (0) 400 907 979, +358 (0) 29 52 53012. Pilot assistance non-mandatory.

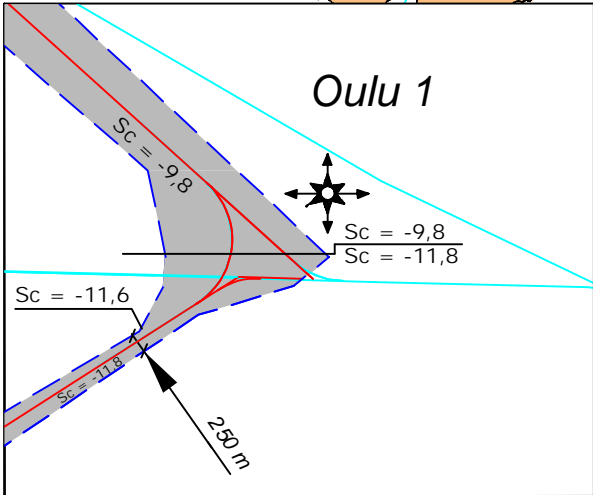
VTS: Bothnia VTS, VHF Channel 67. Tel. +358 20 448 7356. Email: bothnia.vts@fintraffic.fi



COASTAL FAIRWAY RAAHE - OULU - KEMI



Not for navigational use
Sc = Safe clearance depth /
N2000 (BSCD2000)



Updated 20.12.2021