

#### CHANNEL DATA

Alignment and buoyage: Fairway starts N of Nahkiainen Lighthouse continuing in east-west direction to port of Raahe. Distance between Raahe lighthouse and the port is approx. 8 km/4 nautical miles. 4 lines, marking is based on the lighthouse, boards, edge marks, buoys and spar buoys in combined use. Lateral marking. Lit. Dimensions: Design vessel: L= 181 m, B= 32,2 m, T= 10,0 m. Design draft 10.0 m. Safe clearance depth in the approach -11,8 m, in the entrance -11,3 m. Minimum width 160 m. The fairway has two lines in the approach and one in the entrance. On the outermost bend and on the Heikinkari bend the bend radius is 1200 meters. Design speed in the approach 11 knots, in the entrance 8 knots.

Note. Depth information reference level is N2000 (Baltic Sea Chart Datum 2000 / BSCD2000).

<https://www.traficom.fi/en/transport/maritime/n2000-fairway-and-nautical-chart-reform-improved>

Areas with meeting and overtaking prohibitions: The channel has one permanent area of meeting and overtaking prohibitions, look closer to Bothnia VTS Masters´ Guide.

<https://tmfg.fi/en/vts/masters-guide>

Anchorage areas etc.: An area for anchoring is located between Heikinkari and the breakwater. During the fast ice period vessels can also use the area for waiting. Icebreakers use the area for waiting and turning.

Cardinal marking. Safe clearance depth -8,9 m, seabed of sand and stone. The center of the anchorage area is approx. 200 m of the fairway's middle line.

#### NAVIGABILITY

Navigational conditions: The fairway is open sea area and unsheltered against all winds. Strong wind affects the navigation on the entire fairway and in the harbour. Strong waves occur from the approach to Heikinkari. Strong transverse current may accrue between the approach and the edge mark Jaakko, especially in southern winds. Squat effect on the dredged part of the fairway, from the edge mark Länsipiekko to harbour.

Ice conditions: Between the approach and Heikinkari the ice is in movement almost whole winter forming ice ridges on the area between edge marks Jaakko and Länsipiekko. Ice is mobile on the whole fairway in spring, fall and mild winters. Buoys and spar buoys may be pressed under ice (surface). A thick layer of sludge builds up in strong W winds between Heikinkari and the breakwater. Fast ice is usually approx. 10-80 cm thick. The port is normally ice-free the whole winter.

RECOMMENDATIONS Wind: The critical wind speed for the design vessel is 15 m/s, direction NW – NE; for larger vessels the recommendation is 12-15 m/s, direction SW-N; same recommendations apply in the harbour area. Wind gauges: Marine weather observations: Raahe Nahkiainen, Hailuoto Marjaniemi, Kalajoki Ulkokalla. Sea level: Raahe mareograph.

#### TRAFFIC SERVICE

Pilotage: E-mail: [pilotorder.west@finnpilot.fi](mailto:pilotorder.west@finnpilot.fi). Order a pilot: [www.pilotonline.fi](http://www.pilotonline.fi) Tel.: +358 (0) 400 907 979, fax: +358 (0) 29 52 53012. Pilot boarding position Raahe: 64°38,78' N, 24°12,32' E. Pilot distance 6 nautical miles. NB. In winter and adverse weather conditions the pilot boarding position is separately agreed.

VTS: Bothnia VTS, channel 67. Tel. +358 204 48 7356. Email: [bothnia.vts@fintraffic.fi](mailto:bothnia.vts@fintraffic.fi)

Tugs: Private owned tugs: Aquila, order tel. +358 10 2190 750 (24 hrs). Email:

[jani.hannula@xypilahinaus.fi](mailto:jani.hannula@xypilahinaus.fi). Charlie, order, +358 400 588 566. Email: [charlie@c-shipping.se](mailto:charlie@c-shipping.se)

SSAB Europe Ltd. tel: +358 20 592 3890

PORT: Quays: SSAB Quays: Deep quays 1 and 2, length 355 m, safe clearance dept -11,3 m; Import, quays 1 and 2 total length 270 m; quays 4 and 5, tot. length 263 m, quay 6 tot. length 206 m. Safe clearance depth at quays 3 and 4 – 7,1 m, at quay 2 -7,7 m, the rest -8,8 m. Lapaluoto quays: quay 1, length 101 m; quay 2, length 120 m; quay 3 length 100 m; waiting quay, length 60 m. Safe clearance depths -8,8 m; tug quay -4,8 m. Cargo handling: SSAB harbour: 1 x 40t and 1 x 60 t cranes, a mobile crane 100 t available. Lapaluoto harbour: mobile cranes max. 140 t. Harbour basin: Diameter of turning circle 340 m. Use of anchor prohibited.

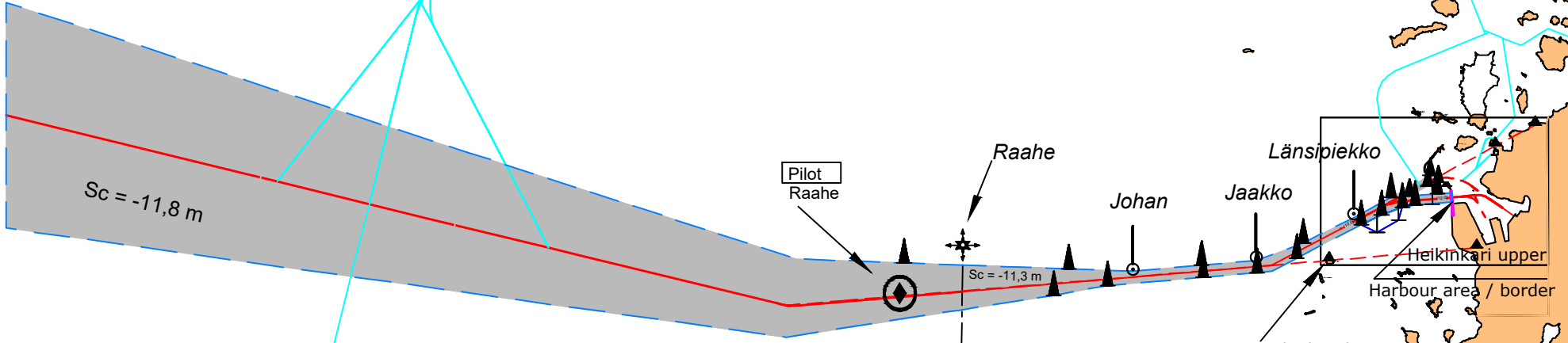
#### CONTACT

Port of Raahe Ltd. Lapaluoto	tel: +358 8-227 7555	weekdays kl. 08-16:00
Gate security 24h	tel: +358 20 592 2336	
Safety point 24h	tel: +358 40 135 6794	
Cargo handling, Lapaluoto	tel: +358 20 592 3898	
SSAB Europe Ltd Raahe harbour		
Ship agents	tel: +358 20 592 3890	
Head of port services	tel: +358 20 592 2335	



To Oulu

Raahe - Oulu - Kemi  
coastal channel



Sc = -11,8 m

Pilot  
Raahe

Raahe

Johan

Jaakko

Länsipiekkö

Heikinkari upper

Harbour area / border

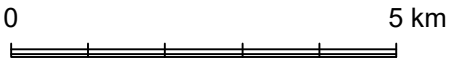
Heikinkari lower

Sc = -11,8 m | Sc = -11,3 m

Nahkiainen



# RAAHE FAIRWAY



Not for navigational use  
Sc = Safe clearance depth / N2000 (BSCD2000)

Updated 20.12.2021

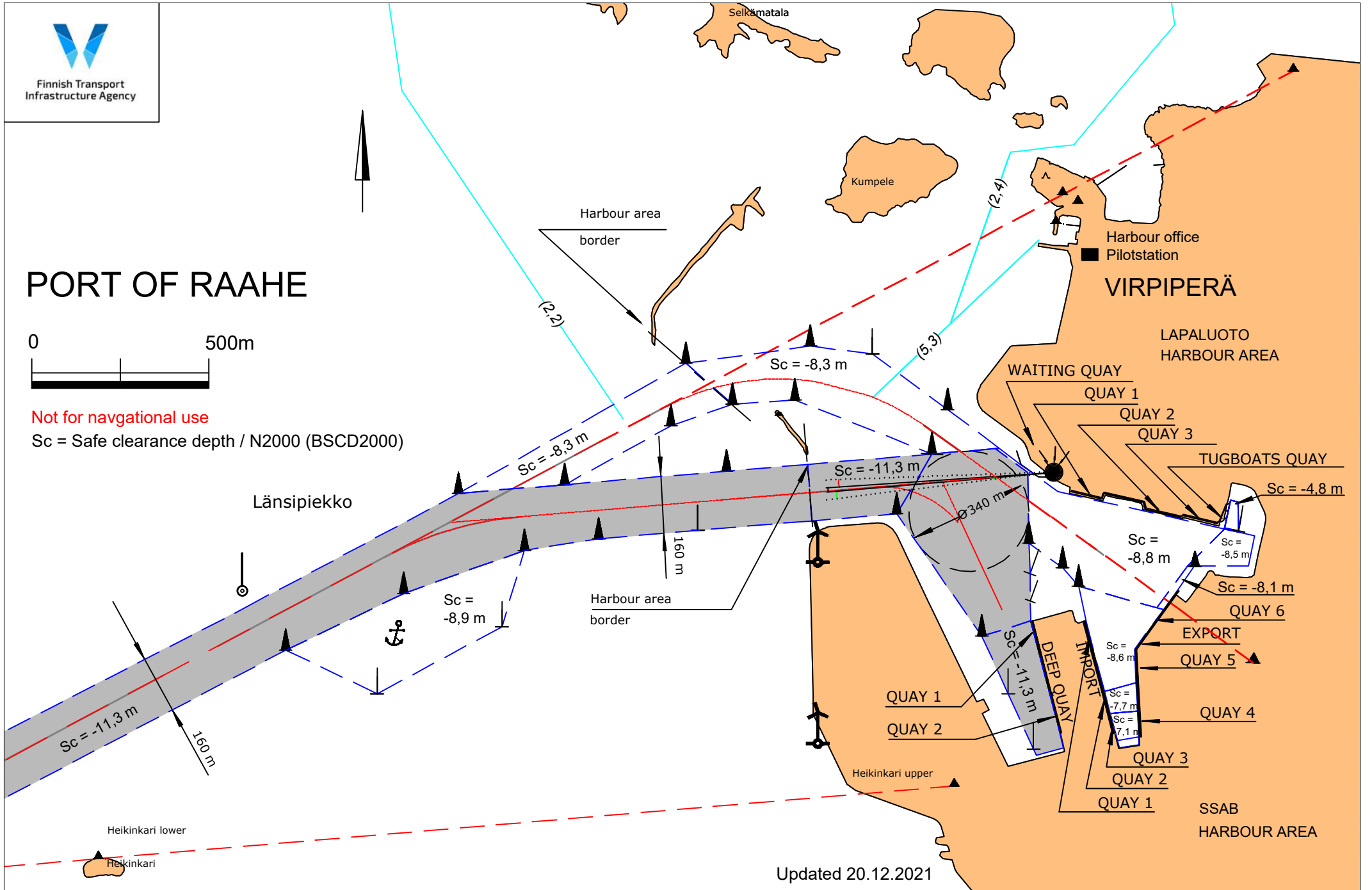
Raahe - Oulu - Kemi  
coastal channel

# PORT OF RAAHE



Not for navigational use

Sc = Safe clearance depth / N2000 (BSCD2000)



Updated 20.12.2021