

FAIRWAY DATA

Channel alignment and marking: The channel starts N of Pori lighthouse and continues in NE-SW direction to KISSAHAUTA, and further along a short stretch to the deep-water harbour. Length approx. 13 km/7 nm. Two (2) leading lines, the outer line marked by leading marks. Lateral marking. Lights.

Fairway dimensions: Design vessel: bulk carrier, $l = 260$ m (maximum 300 m), $b = 40$ m (maximum 48 m), $t = 15.3$ m. Maximum authorised draught 15.3 m. Safe clearance depth (MW80): inner section -18.2 m, from Haminakari to KISSAHAUTA -17.7 m and in the harbour area -17.5 m. Minimum channel width 200 m, in the harbour area 150 m. Design speed for squat in the inner section 14 knots.

Anchorage and special areas: Anchorage in the channel approach, NE of Annabella edge mark, cardinal marking. Anchorage in the inner section off the harbour in the KISSAHAUTA area (which also serves as the harbour basin).

FAIRWAY NAVIGABILITY

Navigation conditions: The channel consists of open sea and is unsheltered all the way to port. Strong especially SW and N winds create heavy seas. Attention is to be paid to the shallow waters E and S of Pori lighthouse.

A bottom-mounted breakwater of dredged spoils has been built off the port. Its highest point reaches about 3 m below sea level.

Ice conditions: Fast ice in the channel only during very cold winters. In normal winters there is ice movement in the fairway all winter. Westerly winds cause ridges at the channel entrance. Ice movement may cause buoys to be pressed beneath the surface and their lighting devices of the light buoys may be damaged.

VESSEL TRAFFIC SERVICES

Pilotage: e-mail: pilotorder.west@finnpilot.fi. Order form: www.pilotorder.fi. Telephone: +358 (0) 400 907979, fax: +358 (0) 29 5253012. Pilot boarding position $61^{\circ}33.5'$, $21^{\circ}16'$ (outside chart). Pilotage distance 9 nm. NB. Pilot boarding position to be agreed upon in winter and in adverse weather conditions.

VTS: West Coast VTS, VHF channel 9; phone +358 (0) 20 448 6645; fax +358 (0) 20 448 6533; e-mail: westcoast.vts@fta.fi

Tugs: Orders placed by phone +358 400 591 560. First tug to be ordered 2 h and second tug 4 h in advance.

HARBOUR

Quays: *Deep-water harbour:* quay, length 450 m, maximum authorised draught -15.3 m, safe clearance depth -17.5 m. *Oil and coal harbour:* oil and coal jetty, maximum authorised draught -10.0 m, safe clearance depth -11.5 m.

Cargo handling: A loader of 1,500 t/h, cranes of 32 t and 40 t.

Harbour basin: Diameter of the turning basin 900 m.

CONTACTS

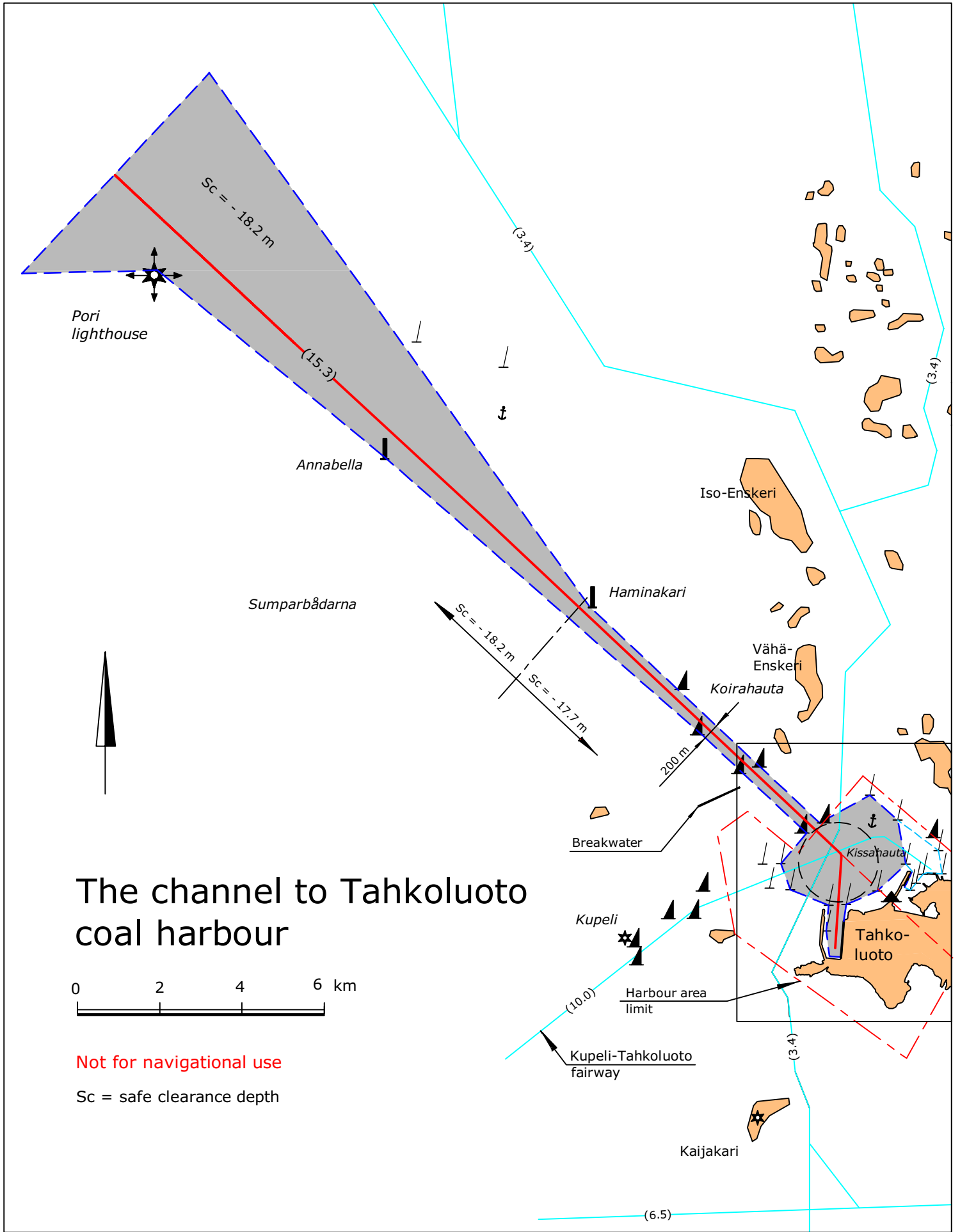
Port of Pori, Pori

e-mail: info.port@portofpori.fi

Managing Director Sari De Meulder; phone 0400 568 501, e-mail: Sari.demeulder@portofpori.fi

Pekka Friman; phone 044 701 2633, e-mail: pekka.friman@portofpori.fi

Port Control 24 h; phone 044 701 2623, e-mail: valvojat.satama@portofpori.fi



The channel to Tahkoluoto coal harbour



Not for navigational use

Sc = safe clearance depth

