

**RAUMA, VALKEAKARI CHANNEL (7.5 M)**

CHANNEL DATA

**Alignment and buoyage:** The channel (7.5 m) starts N of Rauma Lighthouse and continues to the Port of Rauma. Three lines marked with boards. Length approx. 12.2 km/6.8 nm. Lateral marking complemented by cardinal marks. Lit.

**Dimensions:** Design ship: L = 150 m, B = 25 m, T = 7.5 m. Authorised draught 7.5 m, safe clearance depth (MW2000): in the approach -8.6 m, in the entrance -8.5 m. Minimum width 120 m.

**Anchorage areas etc.:** Anchorage W of pilot boarding position. At the extension of the Suokari-line and E of the Pihlus-line a supplementary area has been secured by sweeping.

NAVIGABILITY

**Navigational conditions:** The outer channel consists of open sea and is unsheltered against S-W-N winds. From Pihlus the channel continues sheltered by skerries and islands with scarce edge marking to the Port of Rauma. The minimum width of the channel on the Suokari-line is 123 m, on the Pihlus-line 120 m and on the Valkeakari-line 140 m. At Valkeakari there is a narrow s-shaped bend. The channel is more sheltered than the 10.0-metre fairway to the Port of Rauma.

**Ice conditions:** In winter ice fields are moving in the outer channel as far as Pihlus. Ice movement may cause buoys to be pressed beneath the surface and their lighting devices may be damaged. Under severe ice conditions the channel is closed to traffic.

RECOMMENDATIONS

Vessels with a draught exceeding 7 m have a speed limit of 8 kn (14 km/h). If a higher speed is required in order to manoeuvre the vessel, the Rauma channel (10.0 m) shall be used. Vessels larger than the design vessel shall also use the 10.0-metre channel.

TRAFFIC SERVICE

**Pilotage:** E-mail: [pilotorder.west@finnpilot.fi](mailto:pilotorder.west@finnpilot.fi). Order form [www.pilotorder.fi](http://www.pilotorder.fi). Tel. +358 20754 6153, fax +358 20754 6163. Pilot boarding position 61°10.6', 21°15.1'. Pilotage distance 7 nm.

**VTS:** West Coast VTS, VHF channel 9. Tel. +358 20 448 6645, E-mail: [westcoast.vts@vtsfinland.fi](mailto:westcoast.vts@vtsfinland.fi)

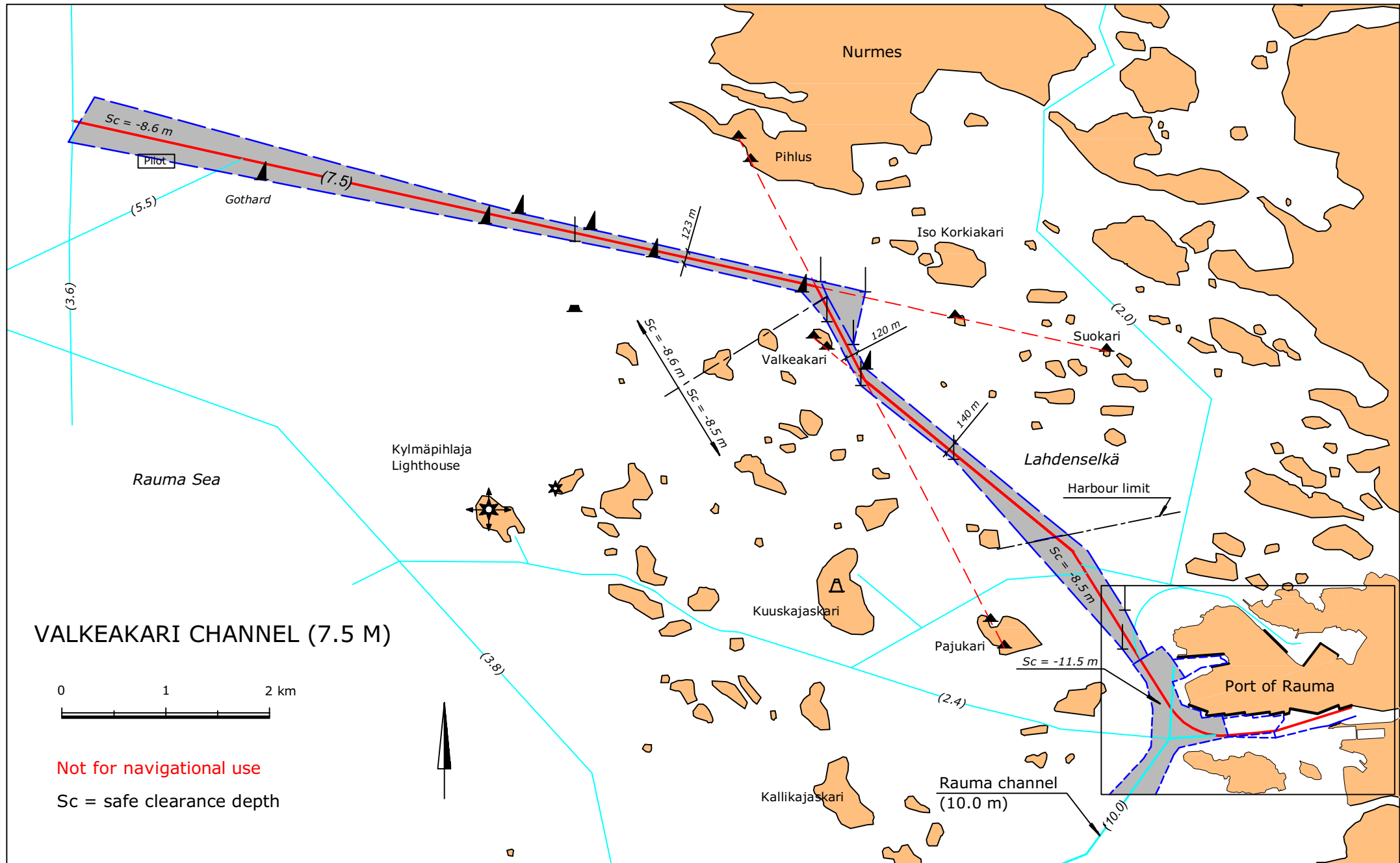
**Icebreakers:** The icebreakers do not assist vessels in the channel.

PORT

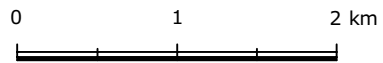
**Quays:** *Oil harbour:* safe clearance depth -9.15 m; *Inner harbour:* 2 chemical piers, safe clearance depths -5.10..-7.05 m. *Laitsaari:* length 246 m, safe clearance depth -9.05 m; *Central harbour:* length 665 m, Ro-Ro berth, safe clearance depths -6.70..-7.30 m; *Iso-Hakuni:* 6 berths alongside/Ro-Ro berths, safe clearance depth -11.0 m; *Petäjäs:* length 445 m, safe clearance depth -11.0 m;

**Cargo handling:** *Oil harbour:* piping, pumping power 1000 t; *Central harbour:* crane 6 t; *Iso-Hakuni:* cranes and reach stackers; *Petäjäs:* cranes 40 t, 45 t and 16 t, pneumatic grain suction device. Vehicle-mounted cranes (50 and 100 t) used in all parts of the port.

**Contact:** Port of Rauma Tel. +358 2 834 4710 Fax +358 2 822 6369  
Port Director Hannu Asumalahti



**VALKEAKARI CHANNEL (7.5 M)**



Not for navigational use

Sc = safe clearance depth



