

CHANNEL DATA

Alignment and buoyage: The fairway separates from the 10.0 m Ajos fairway before Välimatala and continues from there as an 8,0 m fairway to Koivuhauta and further to Veitsiluoto harbour as a dredged 7,0 m canal. Length 20 km / 10,7 nautical miles. 6 lines, marking is based on the boards, edge mark, buoys and spar buoys in combined use. Lateral marking. Lit.

Dimensions: Design vessel: 7,000 dwt, L= 140 m, B= 22 m, T= 7.0 m. Maximum authorised draught between Välimatala - Koivuhauta 8,0 m, between Koivuhauta – harbour 7,0 m. Safe clearance depth in the approach -9,6 m, between Fräki – Koivuhauta -9,3 m, between Koivuhauta – the entrance -8,2 m and in the harbour -8,0 m. Minimum width 80 m, turning radius 700 m. Design speed 8 knots.

Areas with meeting and overtaking prohibitions: The channel has one permanent area of meeting and overtaking prohibitions, look closer to Bothnia VTS Masters ´Guide
<https://tmfg.fi/en/vts/masters-guide>

Anchorage areas etc.: The fairway has been broadened at Fräki for anchoring and passing. Another anchoring spot is located at Koivuhauta, in the northern part of the fairway, depth -10,0 m, diameter 350 m and a seabed of sand. Only suitable for small vessels. Both anchoring spots have cardinal marking. Room for anchoring and passing can also be found at the approach.

NAVIGABILITY

Navigational conditions: The approach is open sea and unsheltered all the way to the edge mark Kraaseli and from there on the fairway is partially sheltered by shallows and the Ajoskrunki island. Fairway is exposed mostly to SE-S-W winds. The entrance is narrow (80-110 m) and winding and therefore hard to manoeuvre, especially in strong wind and if the navigation system of the ship is ineffective. Navigation on the fairway is challenging, vessel speed must be calculated based on the circumstances and a tug boat must be used in the bends if necessary. Must observe that navigation is affected by squat effect and leeway.

Ice conditions: Between the approach and the edge mark Kraaseli there is ice movement in early winter and spring. Ice movement may cause buoys and spar buoys to be pressed under the ice (surface) also N of Ajoskrunki island. Fast ice is approx. 50-80 cm thick in wintertime. The narrowness and bends of the passage make the vessel's course in the icy channel heavy. Warm water effluents alleviate ice conditions in the harbour.

RECOMMENDATIONS (Note - recommendations only apply to the open sea season)

Wind: The critical wind speed between Välimatala and Koivuhauta is 12 m/s, direction SE-W-NW. Between Koivuhauta and the harbour the critical wind speed is 8 m/s, direction SE-W-NW.

Visibility: The visibility is at least 1 km for all vessels.

Wind gauges: Marine weather observations: Kemi 1 lighthouse.

Sea level: Kemi mareograph.

TRAFFIC SERVICE

Pilotage: E-mail: pilotorder.west@finnpilot.fi. Order form: www.pilotorder.fi.

Tel.: +358 (0) 400 907 979, fax: +358 (0) 29 52 53012. Pilot boarding position: Kemi N (not visible on the chart): 65°33,10' N, 24°26,90' E. Pilotage distance 10,8 nautical miles (20 km). NB. In winter and adverse weather conditions the pilot boarding position is separately agreed.

VTS: Bothnia VTS, channel 67. Tel. +358 204 48 7356.

Tugs: Arctia Karhu Ltd. e-mail: towing@arctia.fi tugs: Ahto 3600 kW, Jääsalo 2 x 1,294 kW, Ulla 883 kW are ordered from Kemi tel. +358 400 392 904 and +358 400 442 904.

PORT

Quays: quays 4 – 5: total length 230 m, safe clearance depth 7,9 m.

Cargo handling: Mobile cranes 7 / 6 – 12 t, 4 Ro-Ro ramps.

Harbour basin: Turning basin with diameter of circa 370 m, use of anchor permitted.

Contact Information:

Kemi Port Ltd.

technical manager Jari Heikkilä

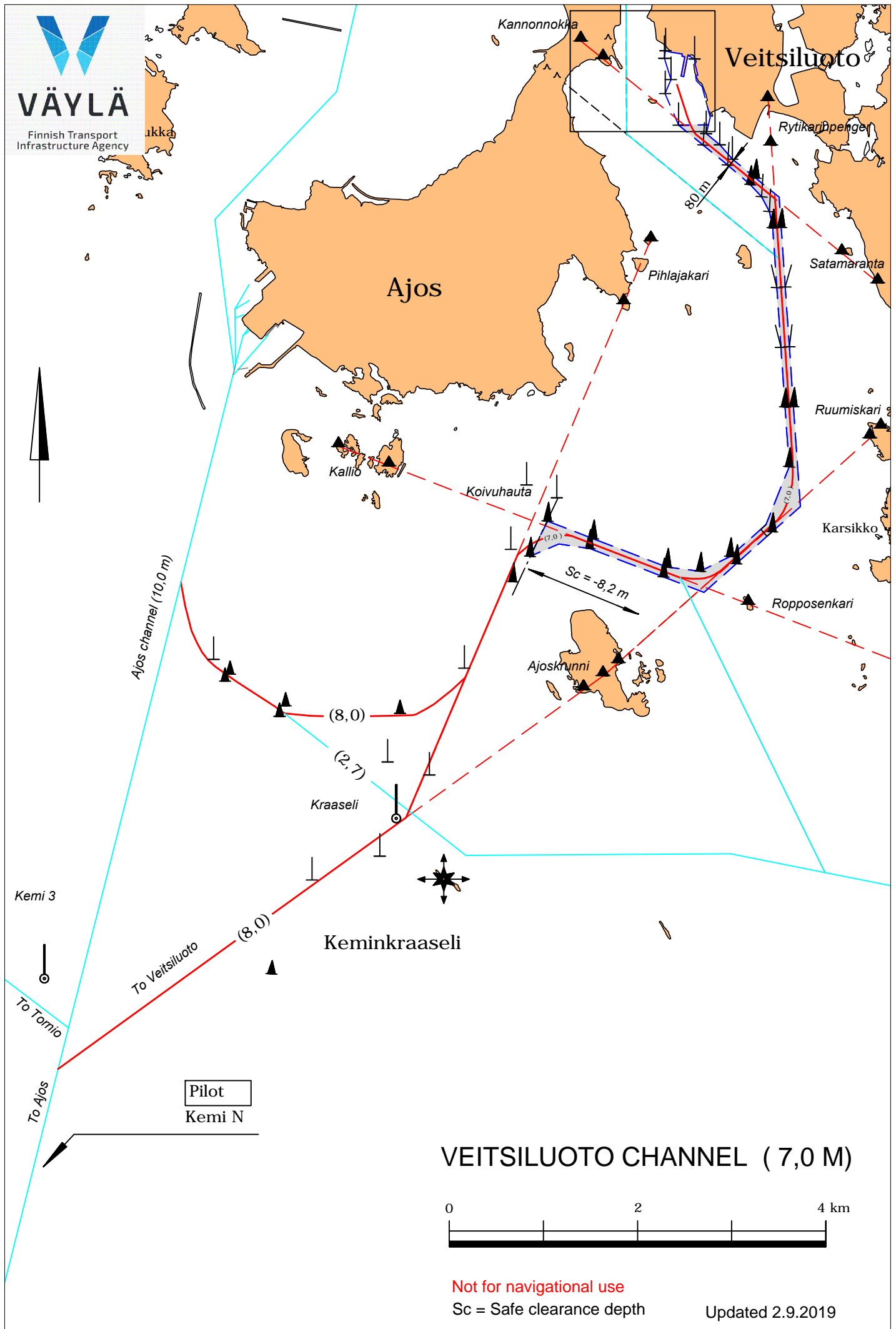
Port Control

tel. +358 16 258 100

mobile +358 (0)40 545 6462

tel. +358 (0)16 215 1628

mobile +358 (0)40 548 2065



VEITSILUOTO CHANNEL (7,0 M)



Not for navigational use

Sc = Safe clearance depth

Updated 2.9.2019

