

CHANNEL DATA

Alignment and buoyage: The fairway separates from the 10.0 m Ajos fairway at Välimatala and continues from there as a 9.0 m fairway to Tornio harbour. Length is 27,5 km / 14,8 nautical miles. 4 lines is marked with boards. Lateral marking from the outmost edge mark (RM Tähti), cardinal marking in the anchoring and turning areas. Lit.

Dimensions: Design vessel: bulk carrier 17,000 dwt, L= 164 m, B= 24 m, T= 9,0 m. Maximum authorised draught 9.0 m, safe clearance depth (MW 2005) in the approach -10,8 m, in the entrance and harbour -10.2 m. Minimum width at the harbour entrance 120 m, turning radius 875 m.

Areas with meeting and overtaking prohibitions: The channel has three permanent areas of meeting and overtaking prohibitions, look closer to Bothnia VTS Masters´ Guide

<https://tmfg.fi/en/vts/masters-guide>

Anchorage areas etc.: At Pohjoiskraaseli the fairway has been broadened for anchoring and passing, depth 18 m, mud seabed. At Lehtikari island there is room for turning and passing, diameter 550 m, depth 11 m, mud seabed.

NAVIGABILITY

Navigational conditions: The one-way fairway has been broadened for anchorage, passage and meeting traffic at Pohjoiskraaseli and Lehtikari. The area between Kemi 2 (not visible on the chartsupplement) and the edge mark Pohjantähti is open sea and unsheltered against southerly winds. A 158 m narrow passage at Keilakrunni. The last section of the fairway, 2 nm before the harbour basin, is a dredged canal, width 120 m. No significant wave formation in the inner section of the fairway or in the harbour, but strong winds and currents from the Tornio river can affect the manoeuvring of the vessels.

Ice conditions: Between the approach and the edge mark Pohjantähti there is ice movement in autumn and spring, which can cause buoys and spar buoys to be pressed under ice surface. Ice ridges occur in wintertime from the open sea to Pohjantähti. Approx. 50 – 80 cm fast ice from Pohjantähti to the Röyttä harbour from December / January to April.

RECOMMENDATIONS (Note - recommendations only apply to the open sea season)

Speed: Vessels with a draught equalling the maximum authorised draught are warned to beware of squat-effekt (design speed in the approach 13 knots and in the entrance 9 knots).

Wind: The critical wind speed between Etukari and Kataja is 15 m/s, direction NE - S - NW. Between Kataja and Tornio harbour the critical wind speed is 8 m/s, direction NE - S - NW. LNG carriers are piloted only when the wind speed is less than 10 m/s.

Visibility: The visibility between Etukari and the harbour is at least 1 nm. LNG carriers are piloted only daytime when the visibility is good.

Wind gauges: Marine weather observations: Kemi 1 lighthouse.

Sea level: Kemi mareograph.

TRAFFIC SERVICE

Pilotage: E-mail: pilotorder.west@finnpilot.fi. Order form: www.pilotorder.fi. Tel.: +358 (0) 400 907 979, fax +358 (0) 29 52 53012. Pilot boarding position: Kemi N: 65°33,10' N, 24°26,90' E. Pilotage distance 22,5 nautical miles. NB. In winter and adverse weather conditions the pilot boarding position is separately agreed.

VTS: Bothnia VTS, channel 67. Tel. +358 204 48 7356.

Tugs: Arctia Karhu Ltd. e-mail towing@arctia.fi tugs: Ahto 3600 kW, Jääsalo 2 x 1,294 kW, Ulla 883 kW are ordered from Kemi tel. +358 46 876 7064, +358 46 87 6062, VHF 16.

PORT

Quays: Quay 1: length 144 m, quay 2: length 144 m, quay 3: length 202 m, quay 4: length 208 m, quay 5: length 151,5 m, quay 6: length 154,1 m, quay 7: length 150 m, liquid-gas quay: length 117 m, to all quays safe clearance depth is -10,2 meters.

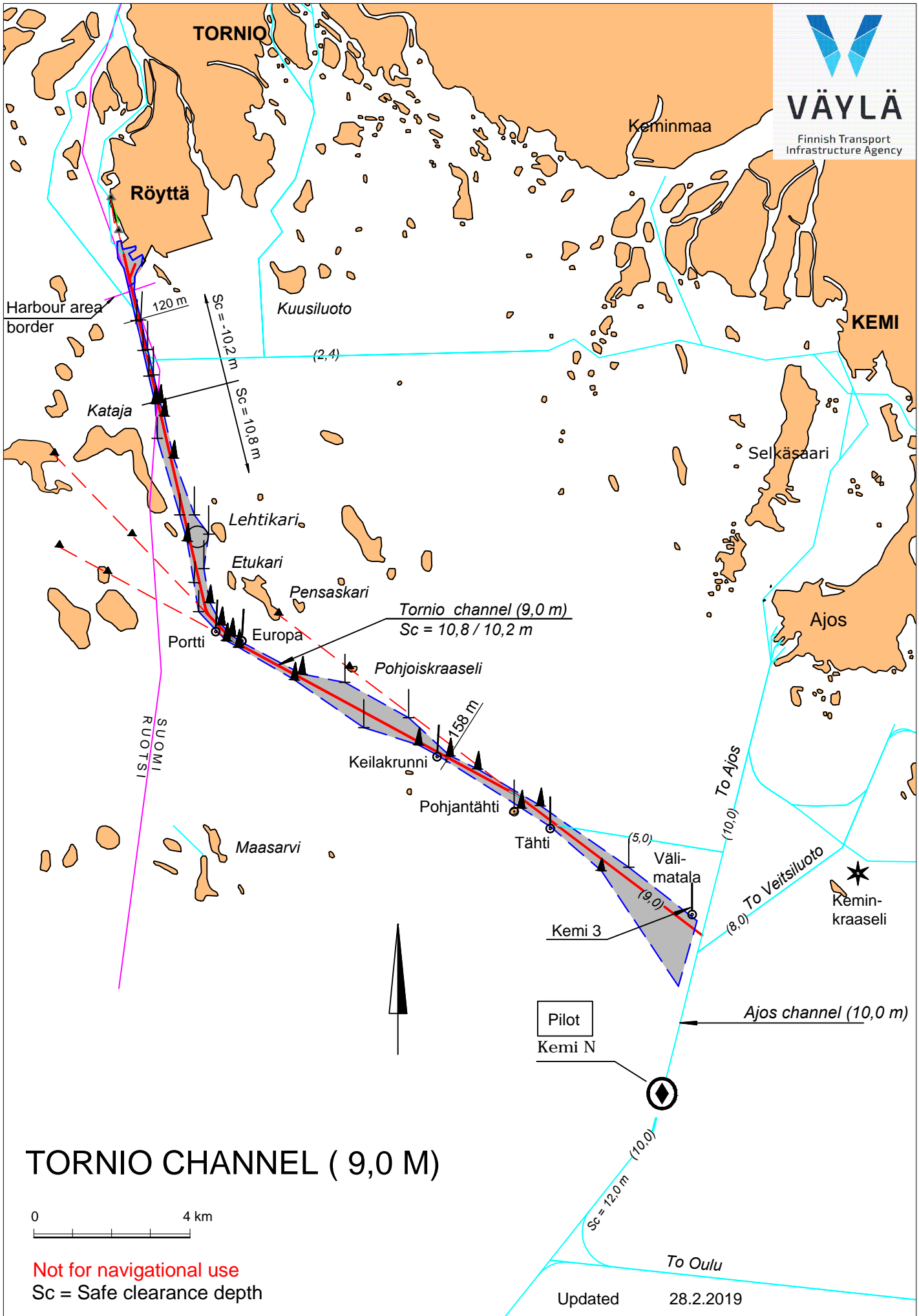
Cargo handling: One 56 t, one 80 t, two 100 t cranes, one 125 t, mobile cranes, gas-discharge beam.

Harbour basin: Diameter of turning basin 330 m. Use of anchor forbidden.

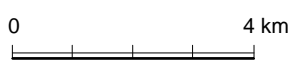
Contact: Röyttä harbour, Tornio
Port director Pekka Harjuoja

tel. +358 16 454 511
tel. +358 40 717 6028

fax +358 16 454 513



TORNIO CHANNEL (9,0 M)



Not for navigational use
Sc = Safe clearance depth

Pirkkiö

Röyttä

Kuusiluodonselkä

Sweden

Crasquay



Harbour area
border

PORT OF TORNIO

0 250 m

Not for navigational use
Sc = Safe clearance depth

Updated 28.2.2019

