

CHANNEL DATA

Alignment and buoyage: The fairway starts S of Kemi 1 lighthouse and leads to the port of Oulu Oritkari. Length a. 80 km/ 43 nautical miles. 13 navigation lines. Lateral marking with buoys and spar buoys. Lit. Dimensions: Design vessel: L= 240 m, B= 33 T= 12,5 m. Authorised draught 12,5 m. Safe clearance depth: -14.9 m MW2018 in the approach, -14,4 m MW2018 in the entrance and in port 13,7 m MW2018. Minimum width 116 m, turning radius 1200 m.

Areas with meeting and overtaking prohibitions: The channel has one permanent area of meeting and overtaking prohibitions, look closer to Bothnia VTS Masters´Guide
<https://tmfg.fi/en/vts/masters-guide>

Speed limits and recommendations: Between Löyhänmutka – Kotakari a speed limit 22 km/h.

Anchorage areas etc.: Anchorage close to Kyrönkari, N of the fairway, about 3 km before Vihreäsaari harbour (depth 14,4 m, mud seabed) and west of Kotakari is a wider area on right.

NAVIGABILITY

Navigational conditions: The approach between Kemi 1 and Kattilankalla consists of open sea; W - SW to NW winds create heavy seas. Sea state is reduced by shallows from Kattilankalla onwards. Between Kattilankalla and port the fairway is sheltered by some small islands and skerries. The final, approximately 2,5 km long part, between Kyrönkari anchoring area and port is a dredged 116 m wide channel

NB: From open sea until Kattilankalla, the Oulu 12,5 m fairway has taken in to use with only floating aids to navigation (buoys), which may cause some restrictions for fairway usage.

Ice conditions: In early winter there is drifting ice along the entire fairway. Outside Kemi 1 and Kattilankalla the ice is usually also ridged. May cause buoys and spar buoys to be pressed under ice (surface) all the way to Kattilankalla. From January to April there is 50–80 cm thick fast ice between port and Kattilankalla. Warm water effluents alleviate ice conditions in Oritkari harbour.

RECOMMENDATIONS

Speed: Ships with a draught of 12,5 m should make allowance for that squat effect might affect the navigation of the vessel between Kattilankalla and the port.

Wind gauges: Marine weather observations, Hailuoto Marjaniemi and Oulu Vihreäsaari and Kemi 1 lighthouse.

Sea level: Kemi mareograph, Oulu mareograph outside of Oulu , Toppila harbour.

TRAFFIC SERVICE

Pilotage: e-mail: pilotorder.west@finnpilot.fi. Order form www.pilotorder.fi . Tel.: +358 (0) 400 907 979, fax +358 (0) 29 52 53012. Pilot boarding positions Oulu N 65°11,52' N, 24°20,57' E and Oulu S 65°07,14' N, 24°16,57' E, NB. Pilot boarding position to be agreed upon in winter and in adverse weather conditions.

VTS: Bothnia VTS, VHF Channel 67. Tel. +358 204 48 7356.

Towage: Tuura 3 x 883 kW, R-Towing Inc.

Booking: +358 400 256517 eller +358 400 382652, VHF 12/67

PORT

Quays: *Vihreäsaari harbour*: oil terminal, 301, length 72 m, bulk terminal, 303, 302, length 150 m, both with an authorised draught of -10.0 m, inner harbour draught -6.1 m (sc= 7.1 m). *Oritkari harbour*: main quay, 103, length 343 m, authorised draught -9.0 m, Ro/Ro ramp, 102 ; North Quay, 101, length 160, authorised draught -10.0 m, Ro/Ro ramp; Chemical terminal 1, 204, length 162 m, authorised draught - 7.5 m; Chemical terminal 2, 203, length 70 m, authorised draught -10.0 m. West Quay: berths 2, 105, length 290 m, draught -12,5 m.

Nuottasaari Quay: berths 1,2 and 3, 202, 201, length 320 m, authorised draught -6.4 m.

Harbour basin: *Vihreäsaari harbour*: diameter of swinging area 200 m. *Oritkari harbour*: diameter of swinging area 320 m.

Contact Information:

Port of Oulu Ltd

Port Director Marko Mykkänen

Port Traffic Manager Sampo Kananen

mobile +358 44 703 2753 fax +358 8 557 2040

mobile +358 44 703 2750

mobile +358 44 703 2751

Kemi 1

(12,5)

To Kemi

Oulu fairway (12,5 m)
(Kemi 1 - Kattilankalla)

Raahe - Oulu - Kemi coastal
channel (8,0 m)

Sc = -14,9 m
MW 2018

Sc = -14,4 m
MW 2018

Oulu fairway (10 M)
(Oulu approach - Oulu 1)

Sc = -12,0 m

Pilot
Oulu N

Oulun portti

Oulu 1

Oulu fairway (10,0 m)
(Oulu 1 - Kattilankalla)

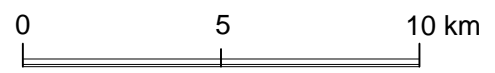
Oulu 2

Välimateala

Oul

Liberta

OULU CHANNEL (12,5 M)



Not for navigational use
Sc = Safe clearance depth

Updated 6.9.2019

(8,0)

(10,0)

(6,1)

(8,0)

(12,5)

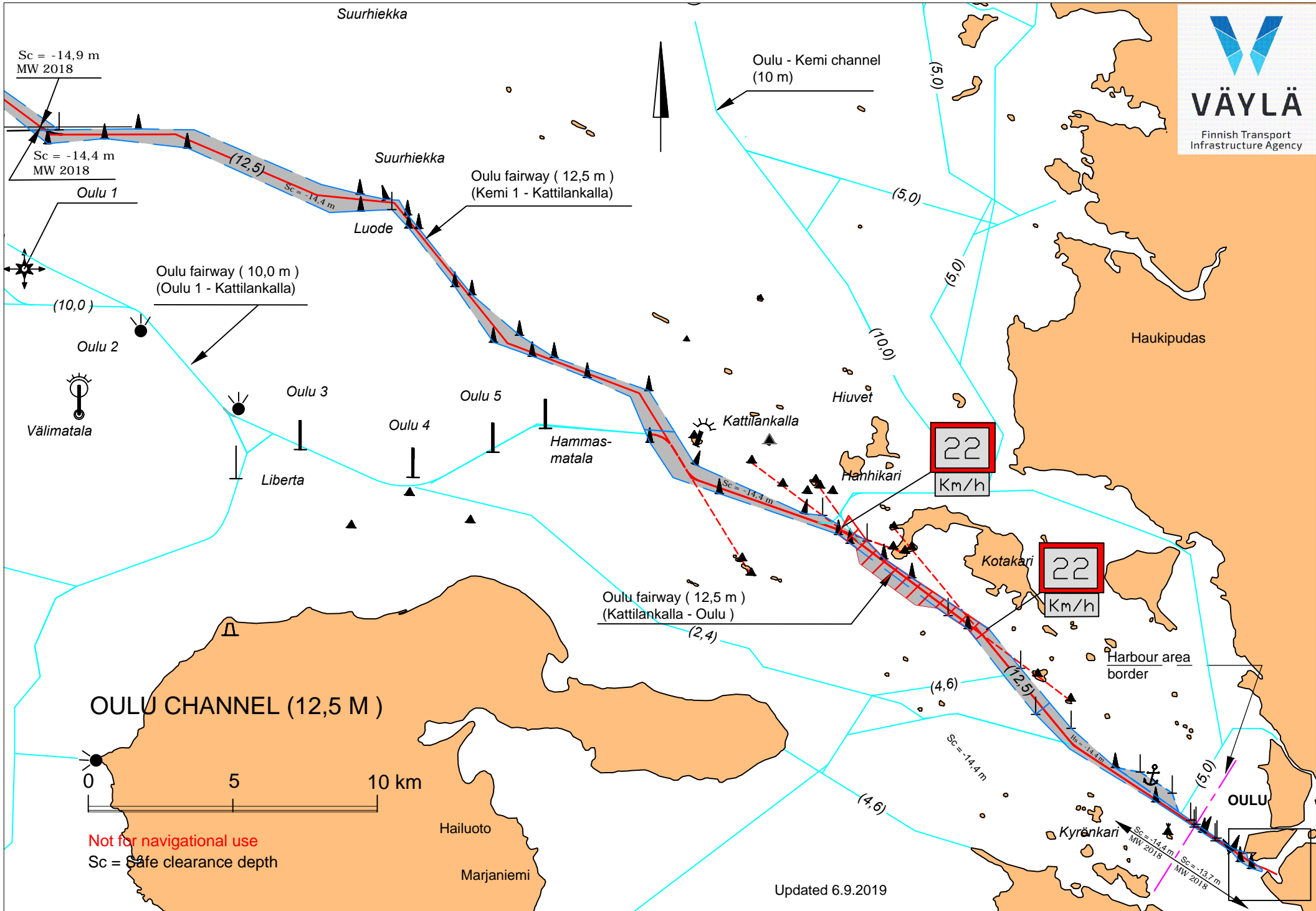
(8,0)

(10,0)

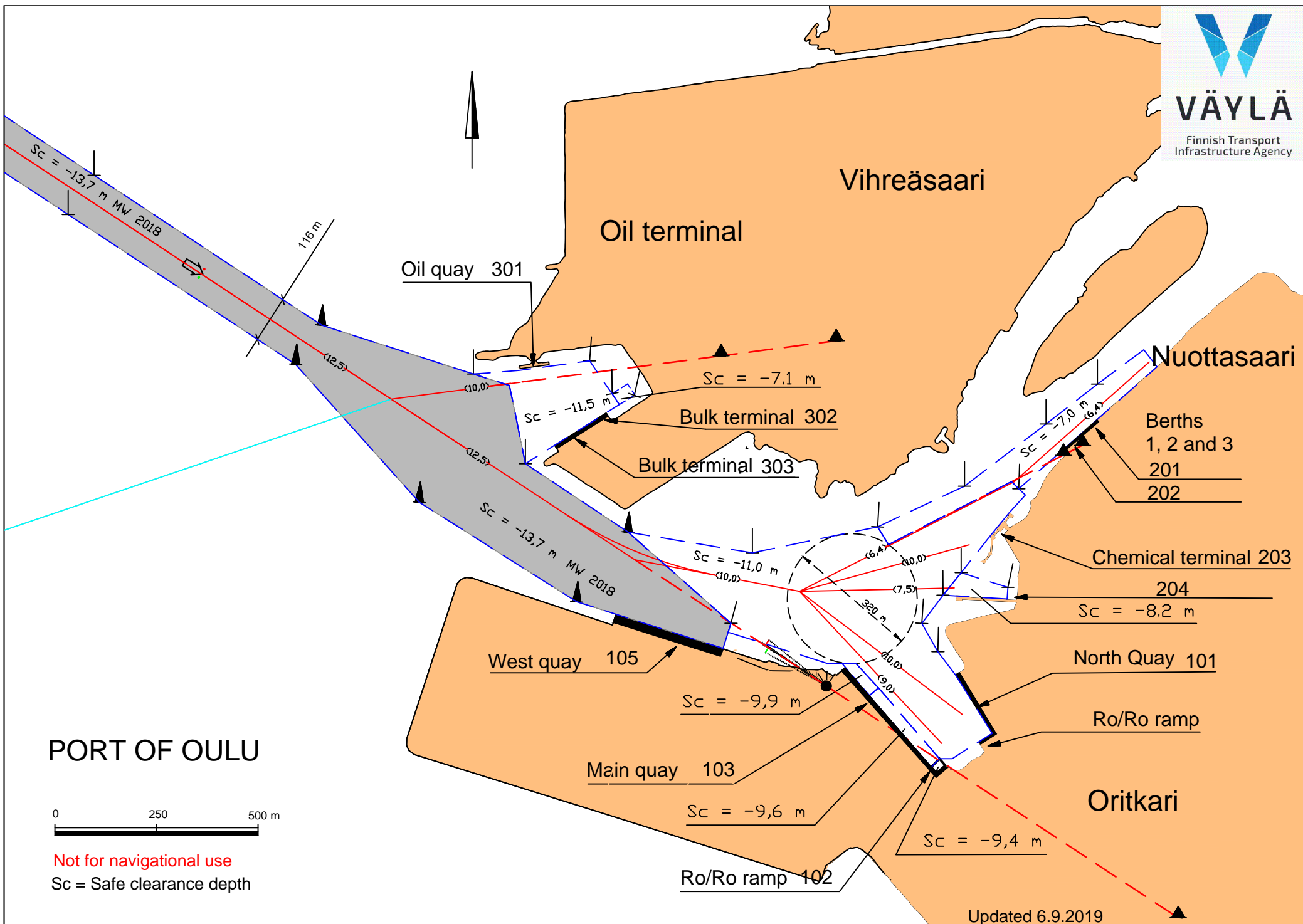
(10,0)

(3,5)

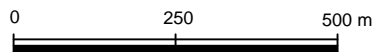
(8,0)



Not for navigational use
Sc = Safe clearance depth



PORT OF OULU



Not for navigational use
Sc = Safe clearance depth

Updated 6.9.2019