

#### CHANNEL DATA

Alignment and buoyage: The fairway starts NW of Merikallat. Depending of the situation and conditions also following approach alternatives can be used:

1. S, crossing nav.lines of Raahe–Oulu–Kemi coastal fairway.
2. N, from Ajos channel, I of Kemi 1 lighthouse, R-O-K channel 8,0 m lines.
3. N, from Ajos channel, N of Kemi 2 radamark to Oulu- Kemi 10 m fairway.

The fairway is narrow and meandering between the pilot boarding position at Oulun portti and the port of Oulu of Vihreäsaari and Oritkari. From Kattilankalla to the port of Oulu, channel authorised draught is 12,5 m ( Oulu channel 12,5 m).

Length a. 64 km/ 29 nautical miles. 10 navigation lines, of which the outermost two marked by sector lights, the rest by boards. Lateral marking. Lit.

Dimensions: Design vessel: L= 210 m, B= 30, T= 10.0 m. Authorised draught 10.0 m. Safe clearance depth: -12.0 m MW 2005 in the approach, -14.4 m MW 2018 and -13,7 m MW 20189 in the entrance. Minimum width 116 m, turning radius 1050 m.

Areas with meeting and overtaking prohibitions: The channel has one permanent area of meeting and overtaking prohibitions, look closer to Bothnia VTS Masters´ Guide

<https://tmfg.fi/en/vts/masters-guide>

Speed limits and recommendations: Between Löyhänmutka – Kotakari a speed limit 22 km/h.

Anchorage areas etc.: Anchorage close to Kyrönkari, N of the fairway, about 3 km before Vihreäsaari harbour (depth sc=-14,4 m MW 2018, mud seabed) and west of Kotakari. is a wider area on right.

#### NAVIGABILITY

Navigational conditions: The approach between Oulun portti and Kattilankalla consists of open sea; SW to NW winds create heavy seas. Sea state is reduced by shallows from Oulu 3 onwards. Between Kattilankalla and port the fairway is sheltered by some small islands and skerries. Between Oulu 5 and Hammasmatala there is a 1.4 km long and 170 m wide channel. The final, approximately 2.5 km long part, between Kyrönkari anchoring area and port, is a dredged, 116 m wide channel

Ice conditions: In early winter there is drifting ice along the entire fairway; outside Oulu 3 the ice is usually also ridged. May cause buoys and spar buoys to be pressed under ice (surface) all the way to Kattilankalla. From January to April there is 50–80 cm thick fast ice between port and Oulu 3. Warm water effluents alleviate ice conditions in Oritkari harbour.

If ice conditions require, the 10.0 m alignment W of Hailuoto.

#### RECOMMENDATIONS

Speed: Ships with a draught of 8 m or over should make allowance for bottom suction between Liberta and Hammasmatala. Between Oulu 4 and Hammasmatala a max. speed of 12 knots is recommended; design speed 13.0 knots (Sc = 12.0 m).

Wind gauges: Marine weather observations, Hailuoto Marjaniemi, Oulu Vihriäsaari and Kemi 1 lighthouse.

Sea level: Oulu mareograph outside of Oulu , Toppila harbour.

#### TRAFFIC SERVICE

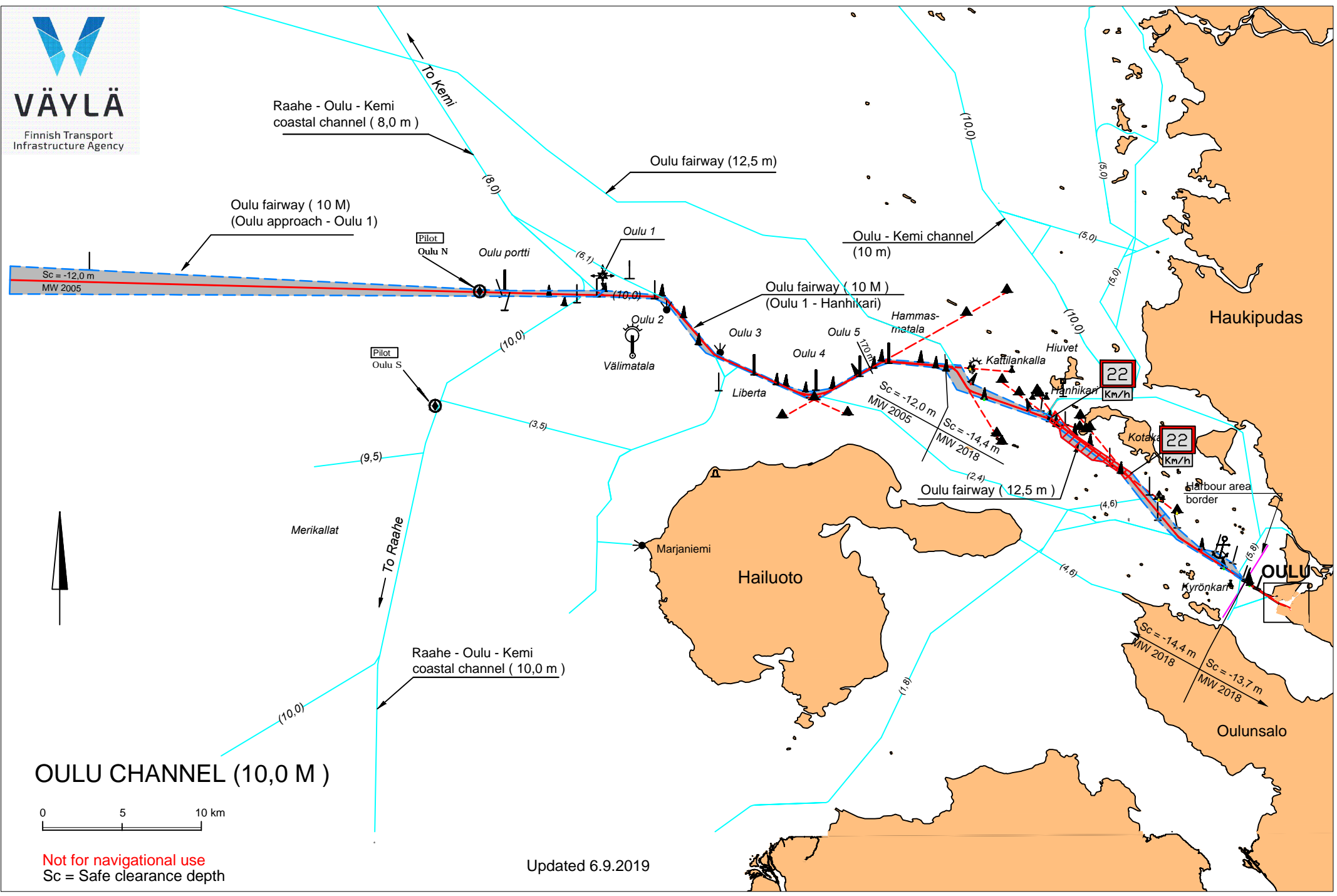
Pilotage: e-mail: [pilotorder.west@finnpilot.fi](mailto:pilotorder.west@finnpilot.fi) Order form [www.pilotorder.fi](http://www.pilotorder.fi) Tel.: +358 (0) 400 907 979, fax +358 (0) 29 52 53012. Pilot boarding positions Oulu N 65°11,52', 24°20,57' and Oulu S 65°07,14', 24°16,57', Pilotage distance 58 /70km. NB. Pilot boarding position to be agreed upon in winter and in adverse weather conditions.VTS: Bothnia VTS, VHF Channel 67. Tel. +358 204 48 7356.

Towage: tug boat Tuura 3 x 883 kW. R-Towing Inc.  
Booking +358 400 256517 or +358 400 382652, VHF 12/67

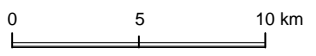
PORTQuays: *Vihreäsaari harbour*: oil terminal, 301, length 72 m, bulk terminal, 303, 302, length 150 m, both with an authorised draught of -10.0 m, inner harbour draught -6.1 m (sc= 7.1 m ). *Oritkari harbour*: main quay, 103, length 343 m, authorised draught -9.0 m, Ro/Ro ramp, 102 ; North Quay, 101, length 160, authorised draught -10.0 m, Ro/Ro ramp; Chemical terminal 1, 204, length 162 m, authorised draught - 7.5 m; Chemical terminal 2, 203, length 70 m, authorised draught -10.0 m. West Quay: berths 2, 105, length 290 m, draught -12,5 m.*Nuottasaari Quay*: berths 1,2 and 3, 202, 201, length 320 m, authorised draught -6.4 m.

Harbour basin: *Vihreäsaari harbour*: diameter of swinging area 200 m. *Oritkari harbour*: diameter of swinging area 320 m, use of anchor permitted.Contact Information:

|                                    |                         |                     |
|------------------------------------|-------------------------|---------------------|
| Port of Oulu Ltd                   | mobile +358 44 703 2753 | fax +358 8 557 2040 |
| Port Director Marko Mykkänen       | mobile +358 44 703 2750 |                     |
| Port Traffic Manager Sampo Kananen | mobile +358 44 703 2751 |                     |

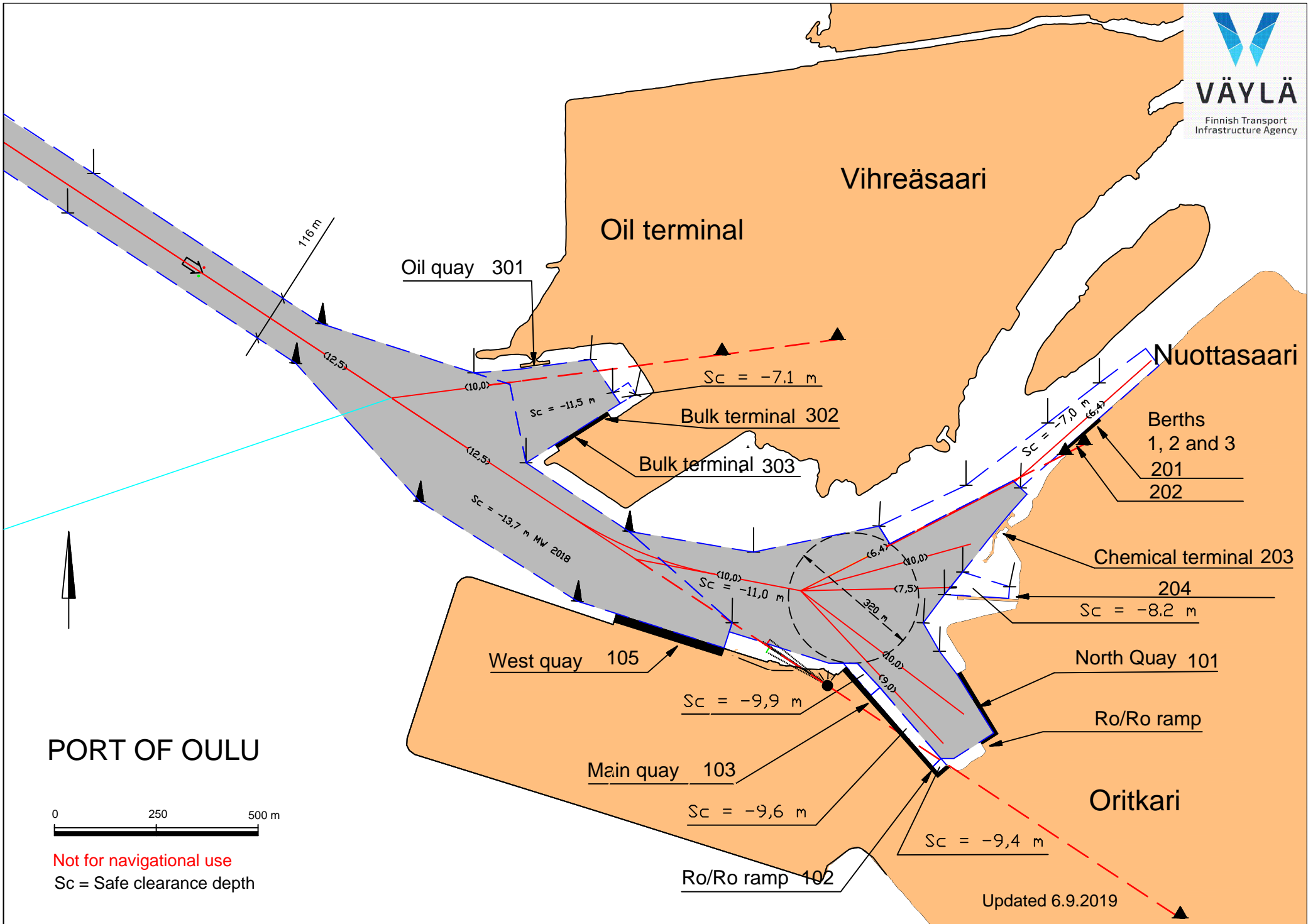


**OULU CHANNEL (10,0 M)**

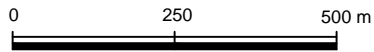


Not for navigational use  
Sc = Safe clearance depth

Updated 6.9.2019



**PORT OF OULU**



Not for navigational use  
Sc = Safe clearance depth

Updated 6.9.2019