

FAIRWAY CARD

1.11.2007

MARIEHAMN CHANNEL (8.2 M)

CHANNEL DATA

Alignment and buoyage: The fairway starts S of Nyhamn from the channel Turku-Stockholm (9.0 m) or SW and S of Marhällan lighthouse. The three routes converge W of Korsö and continue to the port of Mariehamn. Length from Nyhamn approx. 18.5 km/10 nm. 7 navigation lines. Length from Marhällan approx. 10.5 km/5.7 nm. 6 navigation lines. Cardinal marking. Lit.

Dimensions: Design vessel: car ferry. Maximum authorised draught 8.2 m, safe clearance depth (MW2000) -9.2 m. Minimum width 200 m. Design speed 13.0 knots.

Anchorage areas etc.: Anchoring and overtaking in the outer channel NE of Skogsö. The inner anchorage area of the fairway is in the port. Cardinal marking. The area is also used as a swinging area.

NAVIGABILITY

Navigational conditions: The outer channel is unsheltered against S-W winds. The channel continues W of Korsö sheltered by the archipelago and mainland to the port of Mariehamn.

Ice conditions: The fairway is often open in the winter or there can be formation of thin ice.

RECOMMENDATIONS (fairway and harbour)

Speed: In the inner harbour the speed limitation is 12 km/h.

Wind gauges: Korsö.

TRAFFIC SERVICE

Pilotage: e-mail: pilotorder.west@finnpilot.fi. Order form: www.pilotorder.fi.
Tel.: +358 20754 6153, fax: +358 20754 6163. Pilot boarding positions: ~~Marhällan 60°01.3' 19°50.3'~~, pilotage distance 10.5 km; Nyhamn 59°56.5', 19°57.5', pilotage distance 18.5 km.

VTS: Archipelago VTS, VHF channel 71. Tel. +358 20 448 6521 fax +358 20 448 6434.

Towage: Privately owned tugs available.

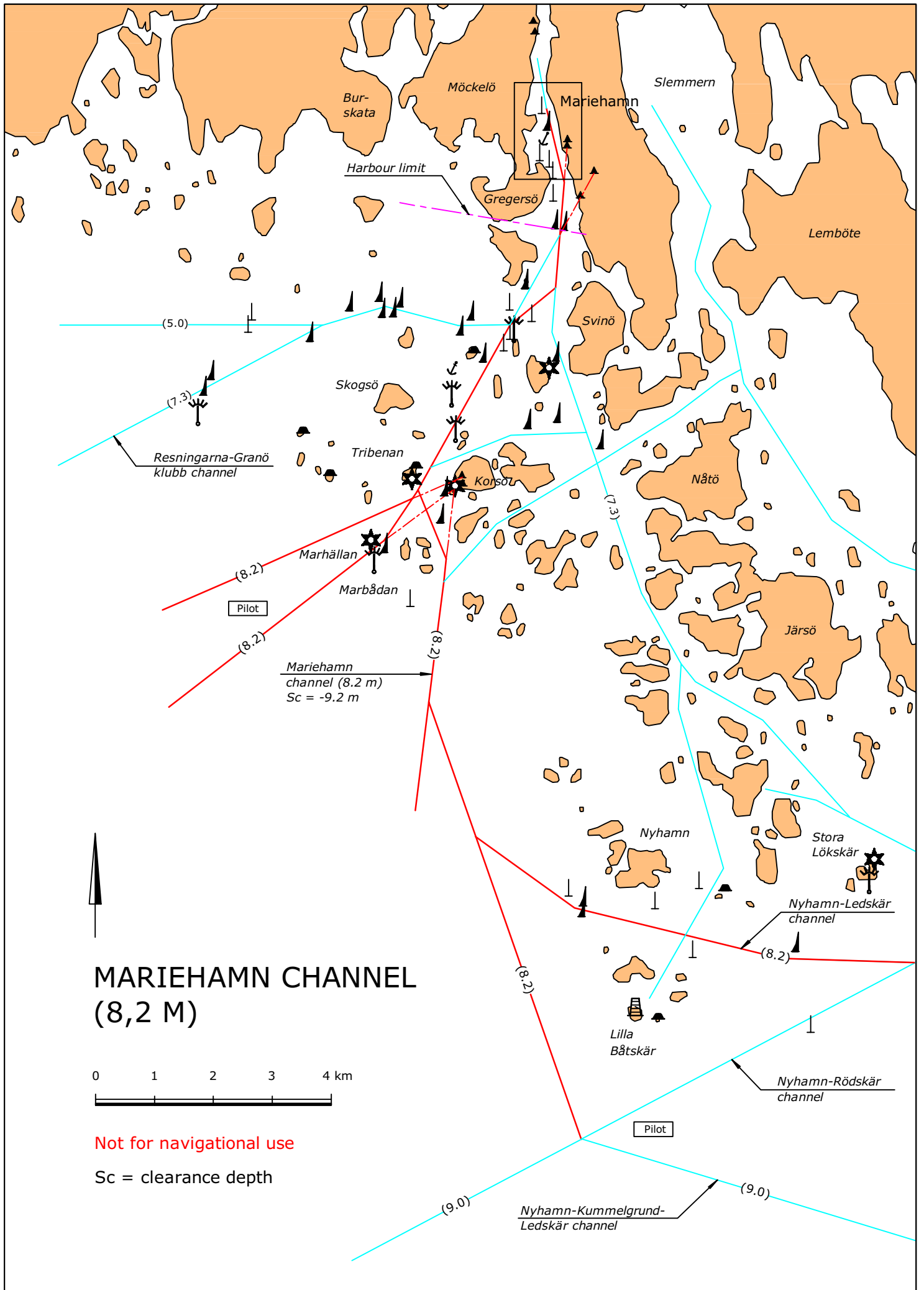
PORT

Quays: *Västerhamn*: Quays 1 and 2, length 250 m, depth 8.2 m; quay 3, length 205 m, depth 8,3 m, ro/ro ramp; quay 4, length 156 m, depth 8.4 m, ro/ro ramp; quay 5, length 140 m, depth 8.2 m, ro/ro ramp; quay 6, length 150 m, depth 9.2 m, ro/ro ramp.
Klintkajen: length 30 m, authorised draught 5.0 m (not on the chart).

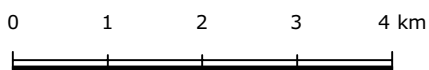
Cargo handling: Cranes.

Harbour basin: Max. draught -9.2 m, max. vessel length approx. 270 m depending on the navigability.

Contact: Port of Mariehamn tel. +358 18 531 470 fax +358 18 531 479
Port Director Jan Sundström



MARIEHAMN CHANNEL (8,2 M)



Not for navigational use

Sc = clearance depth

