

FAIRWAY CARD

PORI, MÄNTYLUOTO CHANNEL (12.0 M)

5.10.2018

FAIRWAY DATA

Alignment and buoyage: The channel (12.0 m) starts at the pilot boarding position SW of Kaijakari light-house and continues to the port of Mäntyluoto. Length approx. 11.2 km. Three lines marked with boards. Lateral marks. Lit.

Fairway dimensions: Design ship: general cargo ship, l = 210 m, b = 35 m, t = 12.0 m. Authorised draught 12.0 m, safe clearance depths (MW2005): in the approach -14.0 m, in the entrance -13.8 m and in the harbour area -13.5 m. Minimum width in the channel 170 m, in the harbour 172 m.

Anchorage and special areas: Anchorage outside the channel in the vicinity of the pilot boarding position. In addition there is a secured area with the water depth -11.2 m NW of the harbour basin which can be used e.g. as a waiting area.

FAIRWAY NAVIGABILITY

Navigation conditions: The channel consists of open sea and is unsheltered as far as the breakwaters at the harbour entrance. Strong especially S-W-NW winds create heavy seas.

Ice conditions: Fast ice in the channel only during very cold winters. In normal winters the ice is in movement in the fairway all winter. Westerly winds cause ridges at the channel entrance. Ice movement may cause buoys to be pressed beneath the surface and their lighting devices of the light buoys may be damaged.

TRAFFIC RECOMMENDATIONS (channel and harbour)

Speed limits and recommendations: Vessels with a draught equalling the maximum authorised draught are warned to beware of squat (design speed in the channel with minimum safe clearance depth 12.5 kn).

VESSEL TRAFFIC SERVICES

Piloting: E-mail: pilotorder.west@finnpilot.fi. Order form www.pilotorder.fi. Tel. +358 (0) 400 907979, fax +358 (0) 29 5253012. Pilot boarding position 61°33.5', 21°16'. Pilotage distance 4 nm. NB. Pilot boarding position to be agreed upon in winter and in adverse weather conditions.

VTS: West Coast VTS, VHF channel 9; phone +358 (0) 20 448 6645; fax +358 (0) 20 448 6533; e-mail: westcoast.vts@fta.fi

Tugs: Orders placed by phone +358 400 591 560. First tug to be ordered 2 h and second tug 4 h in advance.

HARBOUR

Quays: New quay: length 250 m, safe clearance depth – 13.5 m; Kallonlahti: quay length 600 m, safe clearance depth -11.2 m; Old port: safe clearance depths -7.0 m, -8.1 m.

Cargo handling: New quay No 1: one mobile 140 t crane; Kallonlahti: 60 t, 53 t, 50 t cranes and two 40 t cranes; Old port: two 10-t mobile cranes, two 40 t cranes and one 200 t crane.

Harbour basins: Swinging area, diameter 343 m.

CONTACTS

Port of Pori, Pori

e-mail: info.port@portofpori.fi

Managing Director Sari De Meulder; phone 0400 568 501, e-mail: sari.demeulder@portofpori.fi

Pekka Friman; phone 044 701 2633, e-mail: pekka.friman@portofpori.fi

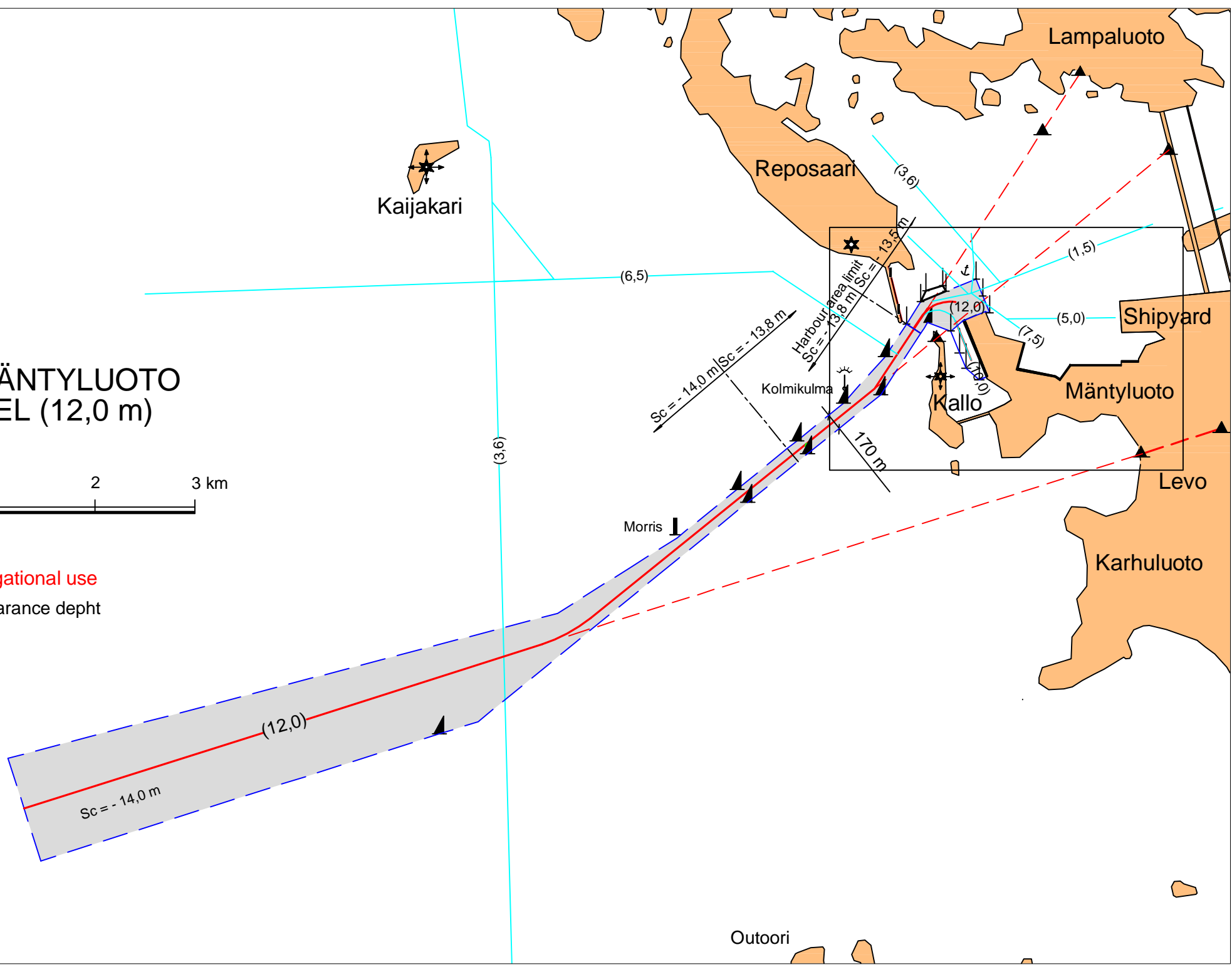
Port Control 24 h; phone 044 701 2623, e-mail: valvojat.satama@portofpori.fi

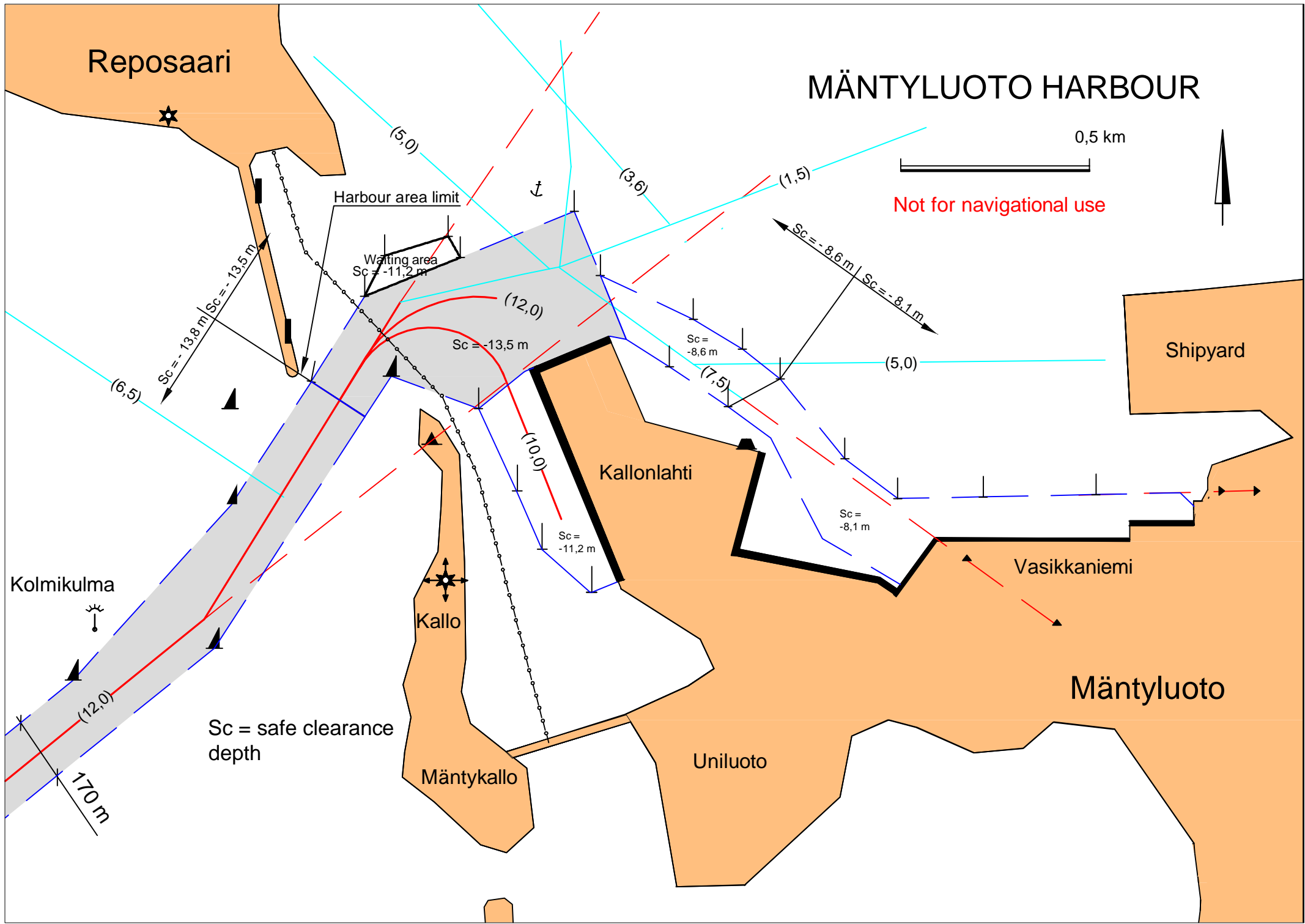
PORI MÄNTYLUOTO CHANNEL (12,0 m)



Not for navigational use
Sc = safe clearance depth

Pilot





Reposaari

MÄNTYLUOTO HARBOUR

0,5 km

Not for navigational use

Shipyard

Kallonlahti

Kallo

Vasikkaniemi

Mäntyluoto

Uniluoto

Mäntykallo

Harbour area limit

Waiting area
Sc = -11,2 m

Sc = safe clearance
depth

Kolmikulma

170 m