

LOVIISA CHANNEL (9.5 m)

CHANNEL DATA

Alignment and buoyage: The channel branches off from the 10.0 m deep Orregrund–Kotka channel at the pilot boarding position S of Orregrund and continues, 9.5 m deep, to Valko harbour. Length approx. 21 km/11 nm. Seven navigation lines, marked by boards and sector lights. Cardinal marks in the approach, lateral marks in the entrance, i.e. between the Gulf of Finland Winter Route and the Bay of Loviisa. Lit.

Dimensions: Design vessel: l = 185 m, b = 28 m, t = 9.5 m. Authorised draught 9.5 m. Safe clearance depth -12,0 m in the approach, -11.5 m E of Hudö, -11.0 m in the entrance and -10.5/10.2 m in the harbour area. Minimum width 100 m. Design speed 11 knots.

Anchorage areas etc.: Anchorage in the bay E of Ratholmen and Lindholmen. Anchoring possible also in the anchorage area of the Orregrund–Kotka channel, 4.5 m SW of Tainio Lighthouse.

NAVIGABILITY

Navigational conditions: The approach is unsheltered against SE-S-SW winds as far as the ramark Lodgrund, after which the channel continues, sheltered by islands and the mainland, to port. There is a narrow passage, 120 m wide, E of Hudö and another one, 100 m wide, E of Trollholmen, with increased risk of bank suction.

In the passage E of Trollholmen, the gross underkeel clearance of mere 1.5 m and the small water cross-section may affect the navigability of vessels sailing at max. draught. In these passages, part-loaded oversized vessels in particular should take prevailing wind directions into account and use tugs for assistance, if necessary. In the entrance and the port there is practically no swell.

Ice conditions: There is a bubbling device in the harbour basin; as a rule, ice difficulties do not arise.

RECOMMENDATIONS (channel and harbour)

Harbour basin: Use of anchors prohibited in winter to protect the bubbling tubes at the bottom.

TRAFFIC SERVICE

Pilotage: e-mail pilotorder.east@finnpilot.fi. Order form www.pilotorder.fi. Tel. +358 20754 6152, fax +358 20754 6162. Pilot boarding position 60°15.43', 26°26.79'. Pilotage distance 12 nm.

VTS: Helsinki VTS, VHF Channel 67. Tel. +358 20 448 5391, fax +358 20 448 5380.

Towage: Privately owned tugs. Tug assistance non-mandatory.

PORT

Quays: *Grain Silo Quay*, authorised draught -9.2 m; *Bulk/Deep Water Quay*, authorised draught -10.0 m; two more berths, authorised draught -7.5 m, and 1-2 berths, authorised draught -8.4 m.

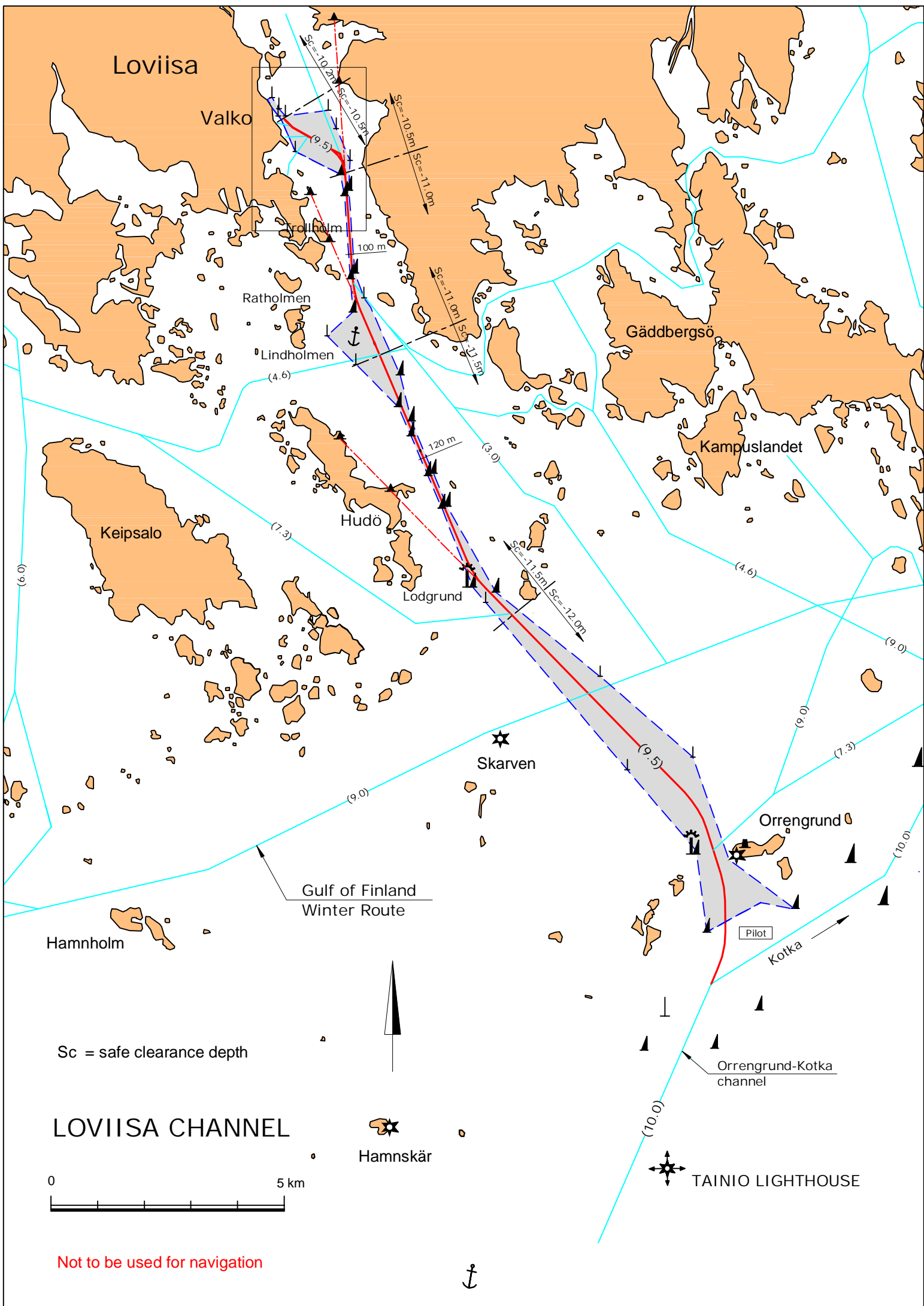
Cargo handling: Cranes, mobile cranes.

Harbour basin: sheltered against swell and winds. Water depth 10.2/10.5 m. Diameter of swinging area 986 m.

Contact: Port of Loviisa Authority

Tel. +358 19 555 731

Fax +358 19 515 055



Loviisa

Valko

Yrjöholm

Ratholmen

Lindholmen

Gäddbergsö

Kampuslandet

Keipsalo

Hudö

Lodgrund

Skarven

Orregrund

Hamnholm

Gulf of Finland
Winter Route

Pilot

Kotka

Orregrund-Kotka
channel

LOVIISA CHANNEL

Hamnskär

TAINIO LIGHTHOUSE

Sc = safe clearance depth

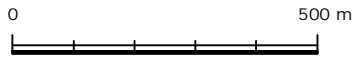


Not to be used for navigation



PORT OF LOVIISA

Monäs



Not to be used for navigation

Sc = safe clearance depth

Bay of Loviisa

Bulk/
Deep Quay

Sc = - 9.9 m

Sc = - 10.2 m

Sc = -10.5 m

Swinging area
Ø 986 m

VALKO

Grain Silo Quay

Sc = -10.2 m
- 8.4
- 7.5
- 7.7

Sc = -10.5 m
- 9.2

(9.5)

(7.5)

(8.5)

(4.2)

(9.5)

Harbour limit

Sc = -10.5 m

Sc = -11.0 m

Fishing harbour

100 m

Tavistholmen

Vårdöudden

