

INKOO FAIRWAY (13 m)

CHANNEL DATA

Alignment and buoyage: The fairway starts S of the Häststen beacon and continues, 13.0 m deep, to the port of Inkoo. Length approx. 34 km/18 nm. 6 navigation lines, marked by boards. Lateral marking from the edge mark Inkoo 3 onwards. Lit.

Dimensions: Design vessel: Panamax type 70,000 dwt vessel, l = 230 m, b = 32 m, t = 13.0 m. Authorised draught 13.0 m, safe clearance depth (MW80) -15.5 m in the approach, -15.0 m in the entrance, -14.3 along the lines outside the harbour. Minimum width 150 m. Turning radius 2000 m.

Anchorage areas etc.: Anchorage possible in the outer part of the fairway, in the anchorage area SE of the sector light Häststen.

NAVIGABILITY

Ice conditions: The fairway is open almost throughout the year.

RECOMMENDATIONS (Note. Apply to Panamax type vessels and vessels larger than that only.)

Speed: To maintain a safe underkeel clearance, the recommended speeds in dredged areas are: Bay of Fagervik, max. 18.5 km/h, and at the south end of the isle Jakob Ramsjö approx. 15 km/h.

Wind: Maximum wind speed 15 m/s.

Visibility: Daylight and minimum visibility of 4 km.

Wind gauges: Bågaskär and Mäkiluoto (wind gauges of the Finnish Meteorological Institute).

TRAFFIC SERVICE

Pilotage: e-mail pilotorder.south@finnpilot.fi. Order form www.pilotorder.fi. Tel. +358 (0) 20754 6151, fax +358 (0) 20754 6161. Pilot boarding position 59°53,6', 24°12'. Pilotage distance 12 nm.

VTS: Helsinki VTS, VHF Channel 09. Tel. 0204 48 5391, fax 0204 48 5380.

Towage: Privately owned tugs. To be booked through the shipping agent. Advance booking 24/12/6 hours, booking at least 3 hours prior to departure/arrival.

PORT

The port consists of two parts: Fortum Oyj Abp's Inkoo power plant harbour and Inkoo Shipping Oy Ab's harbour.

Quays: *Fortum*: quay No. 1, length 170 m, safe clearance depth -10.97 m; quay No. 2, length 240 m, safe clearance depth -14.3 m (MW 2000).

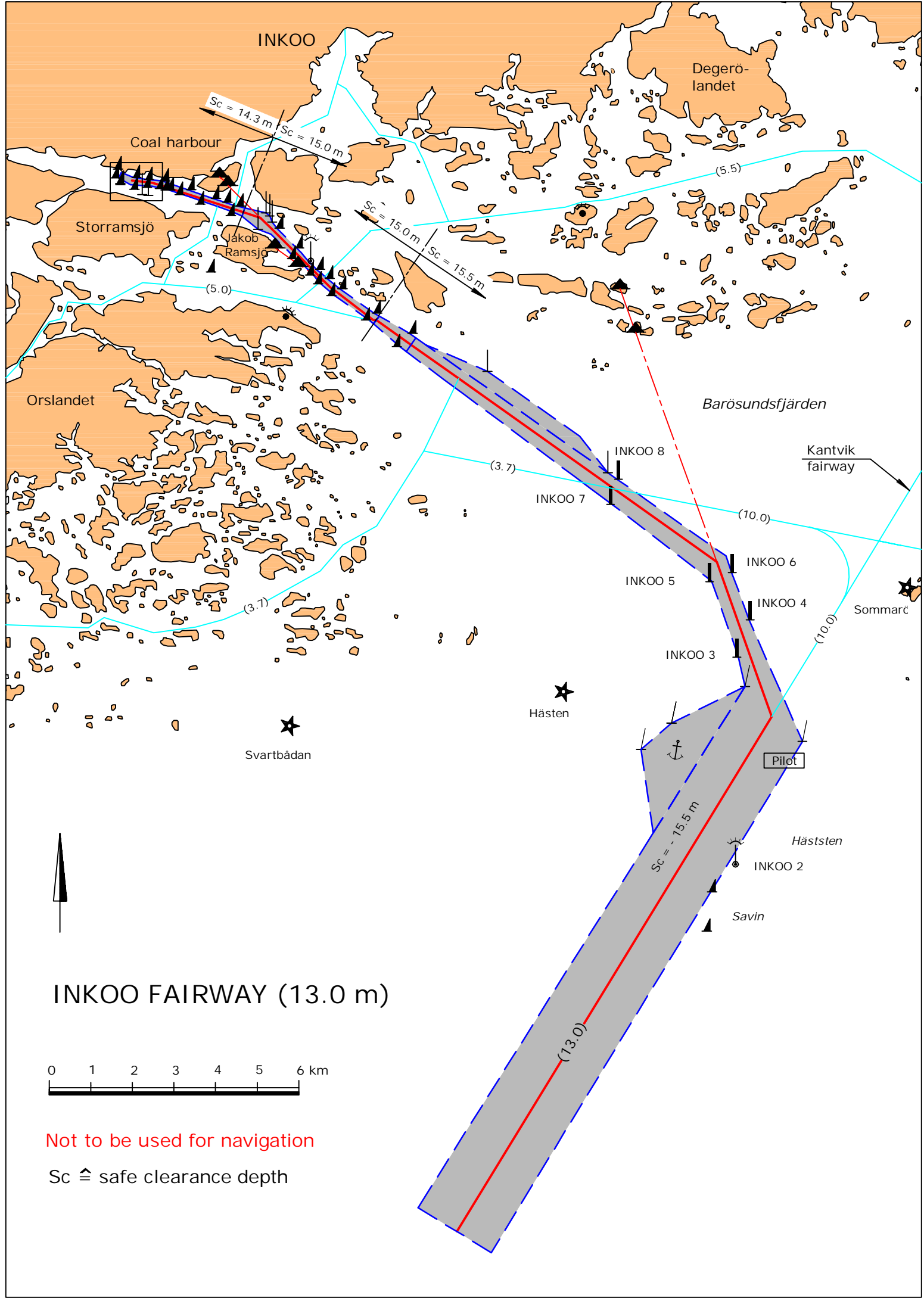
Inkoo Shipping: quay No. 3, length 225 m, safe clearance depth -8,5 m; quay No. 4, length 145 m, safe clearance depth -8.5 m.

Cargo handling: Quays No. 1 and 2: 25 t and 3 x 10 t cranes; quay No. 3: 10 t crane on rail, quay for loading and unloading barges using side ramp; quay No. 4: bow/stern ramp, 2 mobile multipurpose cranes.

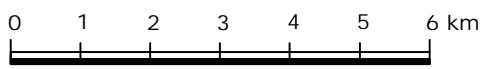
Harbour basin: Diameter of swinging area 400 m, safe clearance depth -9.5 m.

Contact: Fortum Power & Heat Oy, Inkoo Tel. 010 454 3416 Fax 010 454 3402

Inkoo Shipping Oy Ab, Inkoo Tel. 0207 631 500 Fax 0207 631 501



INKOO FAIRWAY (13.0 m)



Not to be used for navigation

Sc $\hat{=}$ safe clearance depth

Fortum Power & Heat Oy Ab

Inkoo Shipping Oy Ab

Quay No.1

Quay No.3

Quay No.2

Quay No.4

Berth No.1

Berth No.4

Berth No.2

Berth No.5

Berth No.3

Sc = -10.97 m

Sc = -14.3 m

Sc = -8.5 m (7.8)

Sc = -11.0 m

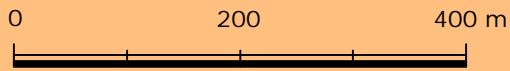
(13.0)

Sc = -9.5 m

Ø 400 m

Harbour limit

Port of Inkoo



Not to be used for navigation

Sc = safe clearance depth



Storramsjö

Bay of Fagervik

