

FAIRWAY CARD

**UUSIKAUPUNKI (HEPOKARI) CHANNEL (8.5 M)**

15.5.2015

CHANNEL DATA

**Alignment and buoyage:** The channel branches off from the Uusikaupunki Channel (12.5 m) N of Ruuhikari and continues to the port of Hepokari. Length 4.1 km. Three lines, the two outermost marked with boards. Lateral marks, in the harbour basin also cardinal marks. Lit.

**Dimensions:** Design ship L = 200 m, B = 20 m, T = 8.5 m. Maximum authorised draught 8.5 m, safe clearance depth (MW 2000) in the channel – 9.7 m, in the harbour area – 9.5 m. Minimum width 100 m, minimum bend radius 850 m. Vessel speed in the channel: 9 knots.

**Anchorage and other special areas:** Anchorage in Uusikaupunki Channel (12.5 m): in the outer channel, 5.5 km NE of Sandbäck Lighthouse (off chart) and SW and SE of Isokari. In the inner channel anchorage N of Ruuhikari. The area is also used as the swinging area of Yara's industrial harbour.

NAVIGABILITY

**Navigational conditions:** The channel is sheltered, but difficult to navigate when exposed to northerly winds. Use of tugs to be considered separately in each individual case.

**Ice conditions:** There may be fast ice in the channel. The channel is kept in navigable condition by tugs.

OPERATIONAL RECOMMENDATIONS (channel and harbour)

**Speed:** Vessels with a draught close to or equalling the maximum authorised draught are warned to beware of squat (design speed 9 knots).

**Wind gauges:** Isokari Pilot Station, Port of Hepokari.

TRAFFIC SERVICES

**Pilotage:** E-mail: pilotorder.west@finnpilot.fi. Phone: +358 (0) 20754 6153, fax: +358 (0) 20754 6163. Pilot boarding position 60°44.1', 20°54.3' in Uusikaupunki Channel (12.5 m). Pilotage distance 25 nautical miles.

**VTS:** Archipelago VTS, VHF channel 71

**Tugs:** Tugboat Jason 1,626 kW, BHP 22 t. Order tel. +358 400 818814, 4 h in advance. ASD tugboat, BHP 45 t also available. To order ASD tugboat and additional tugboats call +358 400 818814, 6 h in advance.

PORT

**Quays:** *Quay 1:* length 100 m + 30m dolphin, stern ramp berth, safe clearance depth 6.0 m; *quay 2:* length 100 m + 30m dolphin, stern ramp berth, safe clearance depth 7.0 m; *quay 3:* dolphin berth, length 150 m, stern ramp berth, safe clearance depth 8.5 m; *quay 4:* length 160 m +55 m dolphins, stern ramp berth, safe clearance depth 8.5 m.

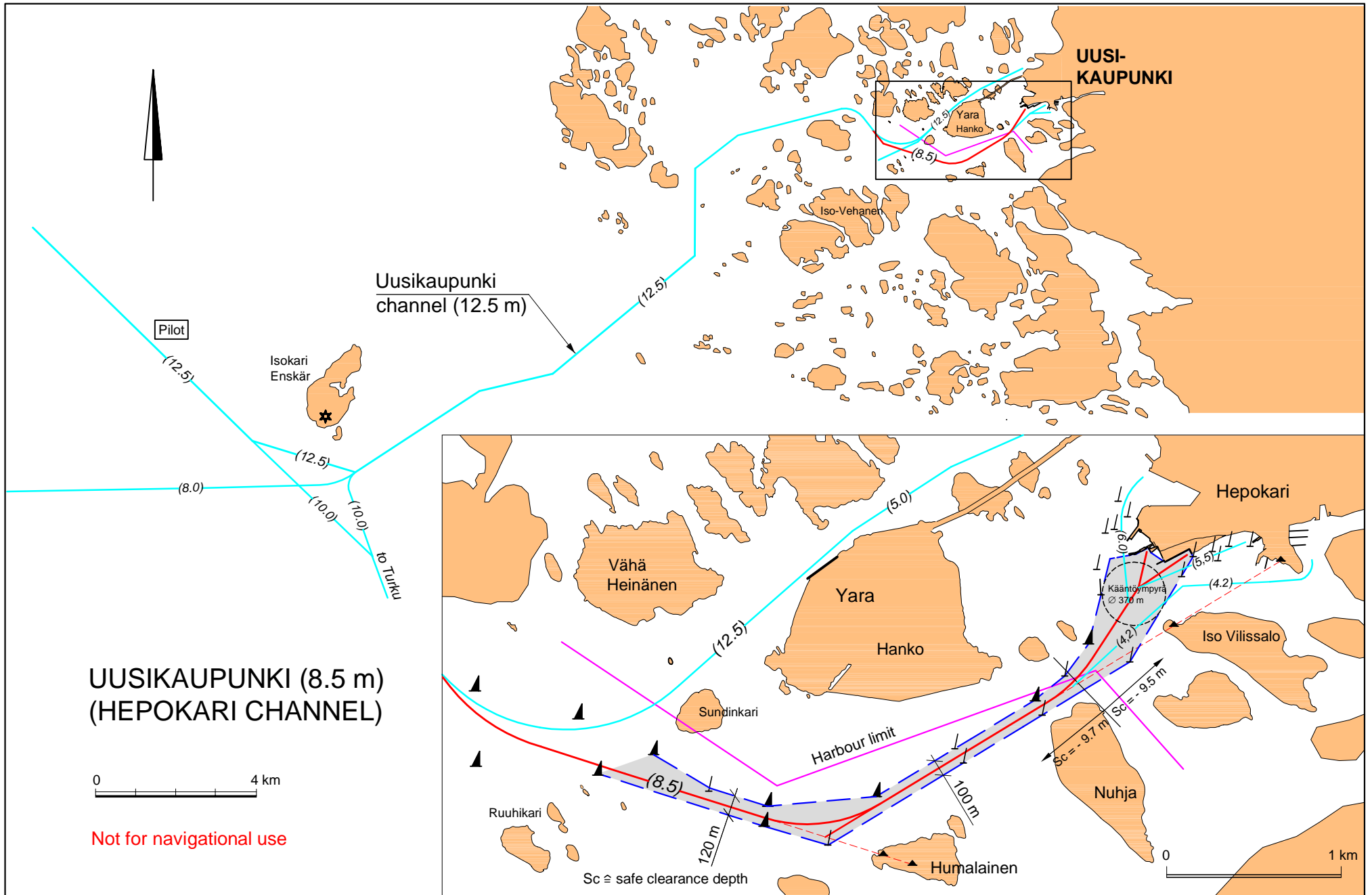
**Cargo handling:** Multifunctional cranes and devices

**Harbour basin:** Swinging area, diameter 370 m.

CONTACT INFORMATION

**VTS:** Archipelago VTS, VHF channel 71. phone +358 (0) 204 48 6521 fax + 358 (0)204 48 6533

**Port:** Port of Uusikaupunki, Uusikaupunki phone +358 50 420 5193  
Harbour Master Olli Metsämäki phone +358 44 777 8686



# HEPOKARI HARBOUR

