

FAIRWAY CARD

21.6.2007

HANKO CHANNEL (13.0 m)

#### CHANNEL DATA

Alignment and buoyage: The channel starts SE of Hanko 1 and continues E of Russarö to the Western Harbour (13.0 m). Length approx. 17 km/9 nm. 2 navigation lines, marked by boards. Cardinal marking. Partly lit.

Dimensions: Design vessel: 65,000 dwt, l = 225 m, b = 34 m, t = 13.0 m. Authorised draught 13.0 m, safe clearance depths (MW90): -15.5 m in the approach, -15.0 m in the entrance, -14.0 m in the harbour area. Design speed 16.0 knots.

Anchorage areas etc.: NW of the Gustavsvärn sector light in the vicinity of the fairway. The inner anchorage area of the fairway is at the port entrance.

#### NAVIGABILITY

Ice conditions: Very variable ice conditions. The fairway can be open all winter or there can be formation of thin ice.

RECOMMENDATIONS (fairway and harbour):

Wind gauges: Hanko pilot station.

#### TRAFFIC SERVICE

Pilotage: e-mail: [pilotorder.south@finnpilot.fi](mailto:pilotorder.south@finnpilot.fi). Order form [www.pilotorder.fi](http://www.pilotorder.fi). Tel.: +358 20754 6151, fax +358 20754 6161. Pilot boarding positions: outer 59°43', 23°05', inner 59°46.1', 23°01'. Pilotage distance from the outer pilot boarding position 9 nm.

VTS: Helsinki VTS, VHF Channel 67. Tel. +358 204 48 5391, fax +358 204 48 5380.

Towage: Privately owned tugs available.

#### PORT

Quays: *Western Harbour*: Ro/Ro berth No 1 (deep quay), length 245 m, safe clearance depth -14.0 m. Ro/Ro berth No 2, length 220 m, authorised draught -9.0 m. Ro/Ro berth No 3, length 280 m, authorised draught -7.3 m. Ro/Ro berth No 4, length 165 m, authorised draught -9.0 m. Ro/Ro berth No 5, length 300 m, authorised draught -7.8. *Outer Harbour (no separate drawing)*: Berth I, length 170 m, authorised draught -7.2 m; Berth II, length 180 m, authorised draught -7.2 m.

Cargo handling: *Western Harbour*: Ro/Ro berth No 1 (deep quay), multipurpose crane 45 t, ramp; Ro/Ro berths No 2-5, ramps. *Outer Harbour*: Berth I, Ro/Ro ramp, discharge of liquid bulk cargo; Berth II, Ro/Ro ramp.

Harbour basin: Diameter of swinging area 800 m, safe clearance depth -15.0 m.

Contact: Port of Hanko

Tel. +358 19 220 3803 Fax +358 19 220 3802

# HANKONIEMI

Hanko

Western harbour

Tulli-  
niemi

Outer  
Harbour

Gustavsvärn

Russarö

Lilla Tärnskär

Hanko 6

Pilot

Hangon itäinen  
selkä

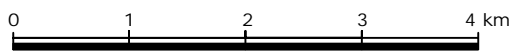
Savimatala

Hanko 1

(13.0)

Sc =  
- 15.5 m

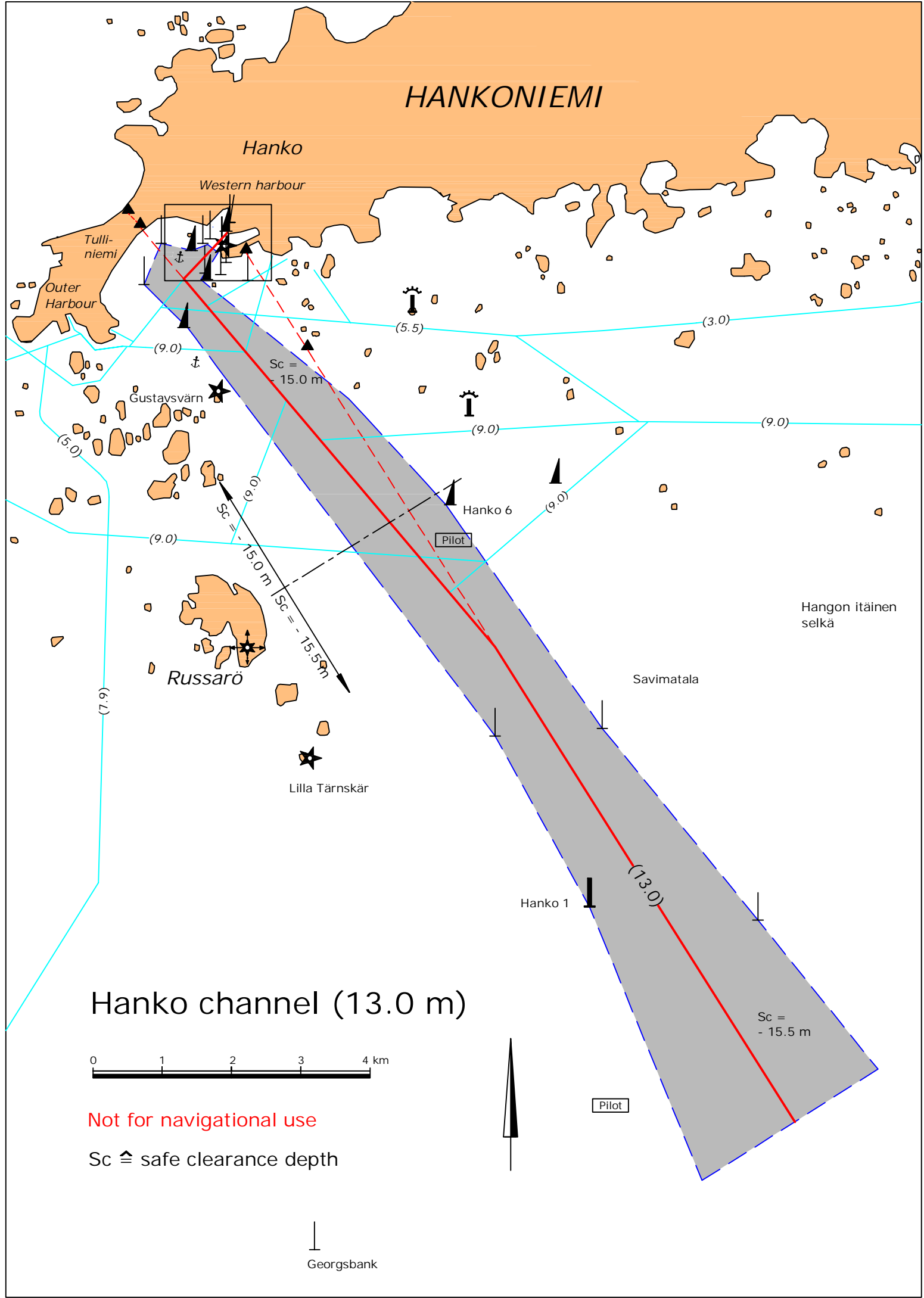
## Hanko channel (13.0 m)



Not for navigational use

Sc ≙ safe clearance depth

Georgsbank



# HANKO

Kalasaatama

Kläppudden

WESTERN HARBOUR

Nuottasaari

Korkeasaari

Meijerfelt

Sc =  
- 6.0 m

(4.5)

Harbour limit

Sc = - 10.2 m

Sc =  
- 14.0 m

Sc =  
- 14.2 m

-7.8

Ro/ro berth No 5

-9.0

Ro/ro berth No 4

Ro/ro berth No 2  
-9.0

Ro/ro berth No 3  
-7.3

Sc = - 15.0 m

(13.0)

## PORT OF HANKO

0 300 m

Not for navigational use

Sc = safe clearance depth

