

CHANNEL DATA

Alignment and buoyage: The Fläckgrund-Förby channel starts at the Hanko bypass channel west of Fläckgrund sector light and continues as a 9.0 m channel in a south-north direction west of Padva and east of Kimito to Förby harbour. Length approx. 30.5 km/16.5 nm. 7 lines marked with sector lights and boards. Lateral marking. Lit.

Dimensions: design ship; 12,000 dwt bulk carrier, l = 160 m, b = 21 m, t = 9.0 m. Maximum authorised draught 9.0 m. Safe clearance depth (MW2000) -11.0 m. Minimum width 135 m. Minimum turning radius 750 m.

NAVIGABILITY

Navigational conditions: In the outer fairway navigation can be hampered by hard S-W winds and heavy seas. From Skataudden to Förby harbour the fairway is sheltered by islands.

The narrowest part of the fairway is NW of Liesniemi, width 135 m. Vessels with a maximum draught should take the suction effect into consideration.

Ice conditions: Southerly winds can at times cause ridges in the outer fairway. During normal winters there is fast ice between Stubbkål and the harbour.

RECOMMENDATIONS (fairway and harbour)

Wind gauge: Hanko pilot station.

TRAFFIC SERVICE

Pilotage: E-mail: pilotorder.south@finnpilot.fi. Order form: www.pilotorder.fi. Tel.: +358 (0) 20754 6151, fax: +358 (0) 20754 6161. Pilot boarding positions: (same as for Hanko channel, 13.0 m) inner 59°46.1', 23°01', outer 59°43', 23°05', off chart. Pilotage distance 27.4 nm.

VTS: Helsinki sea traffic centre, VHF channel 71. Tel.: 0204 48 6521 fax 0204 48 6434.

Tugs: Privately owned tugs available.

PORT

Quays: length 106 m, safe clearance depth 10.0 m. Barge ramp.

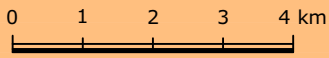
Cargo handling: with discharge pipes into tanks.

Harbour basin: Diameter 480 m, safe clearance depth -11.0 m.

CONTACTS

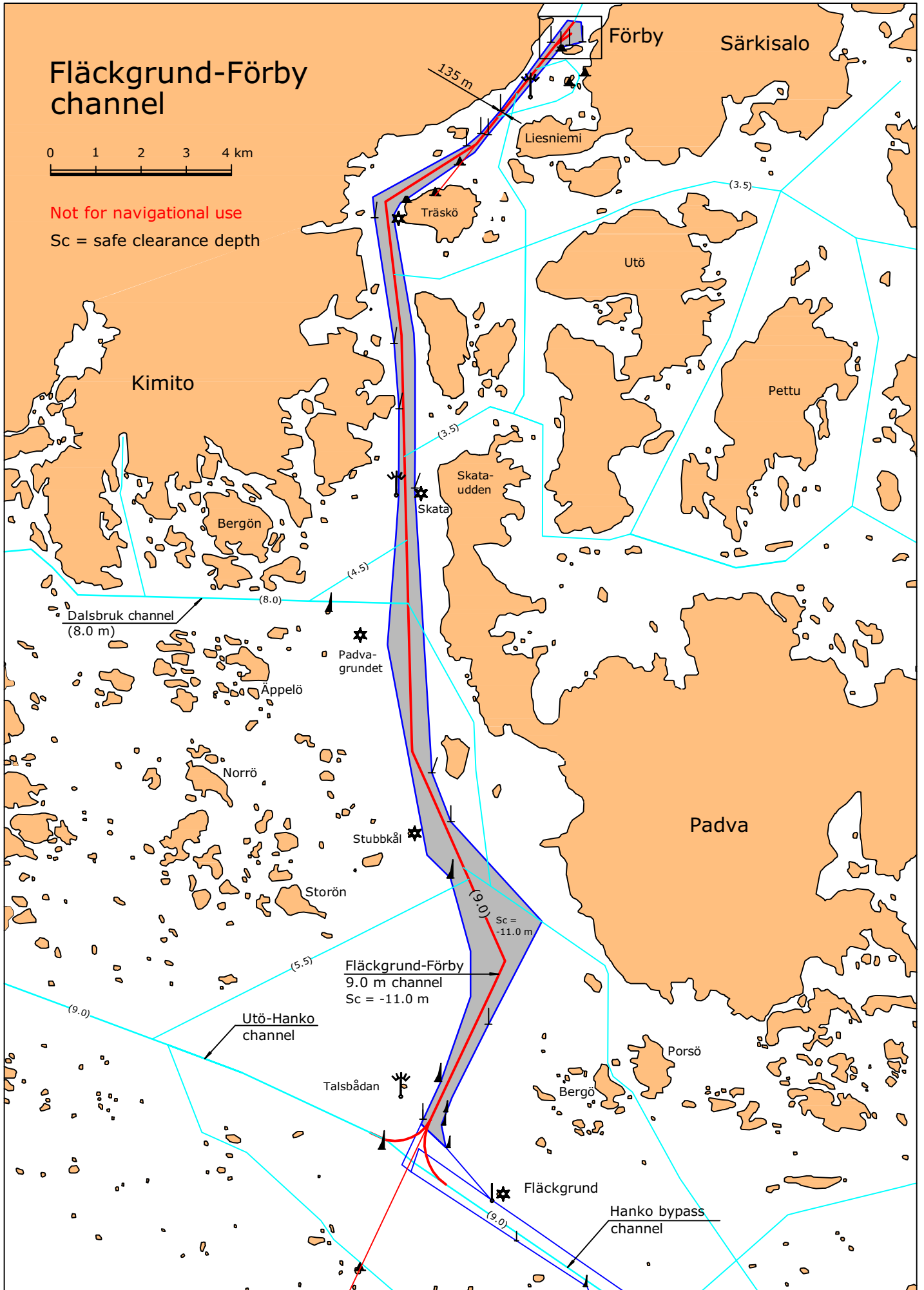
Port: Omya Oy Förby harbour tel. +358 (0)2 77571 fax +358 (0)2 775 7594

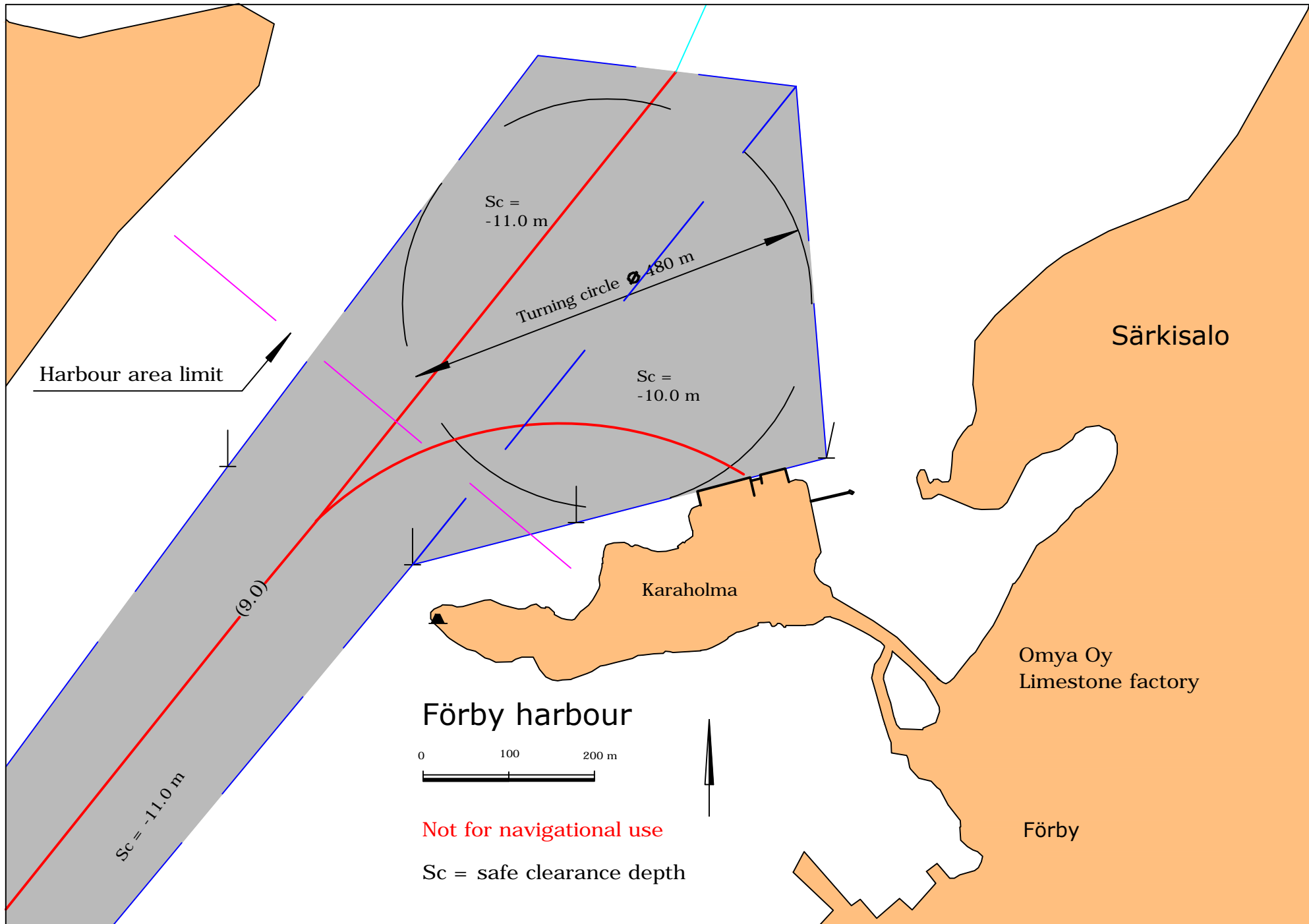
Fläckgrund-Förby channel



Not for navigational use

Sc = safe clearance depth





Harbour area limit

$Sc = -11.0\text{ m}$

Turning circle $\varnothing 480\text{ m}$

$Sc = -10.0\text{ m}$

(9.0)

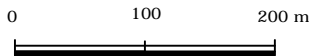
$Sc = -11.0\text{ m}$

Karaholma

Särkisalo

Omya Oy
Limestone factory

Förby harbour



Not for navigational use

Sc = safe clearance depth

Förby