

CHANNEL DATA

Alignment and buoyage: The 10.0 m deep fairway starts S of Nahkiainen Lighthouse, crosses the Raahe channel and continues northwards to the equally 10.0 m deep Oulu channel. A 10.0 m deep west-easterly channel joins the fairway S of Merikallat. The fairway continues, 8.00 m deep, W of the lighthouse Oulu 1 to a point E of the lighthouse Kemi 1 where it meets the 8.0 m deep Ajos channel. 9 navigation lines. Length approx. 110 km / 59.4 nautical miles. Cardinal marks.

Dimensions: *Raahe–Oulu*: design vessel: L= 210 m, B= 30 m, T= 10.0 m. Authorised draught 10.0 m, safe clearance depth (MW 2000) -12.0 m. Minimum width 312 m, turning radius 1000 m. *Oulu–Kemi*: L= 165 m, B= 23 m, T= 8.0 m. Authorised draught 8.0 m, safe clearance depth -10.0 m (MW 2000). Turning radius 1000 m.

Anchorage areas etc.: The channel is without separate anchorage areas.

NAVIGABILITY

Navigational conditions: The fairway is open sea area and unsheltered against all winds. Heavy seas.

The narrowest passage, only 312 m wide, is located approx. 1.6 km SW of the crossing Oulu channel.

Ice conditions: Drift ice throughout the fairway in early and late winter. Buoys may be pressed under the ice surface. Ridging in mid-winter.

RECOMMENDATIONS

Speed: Vessels sailing at maximum draught should beware of the squat effect in the narrow passage 1.6 km S of the crossing Oulu channel.

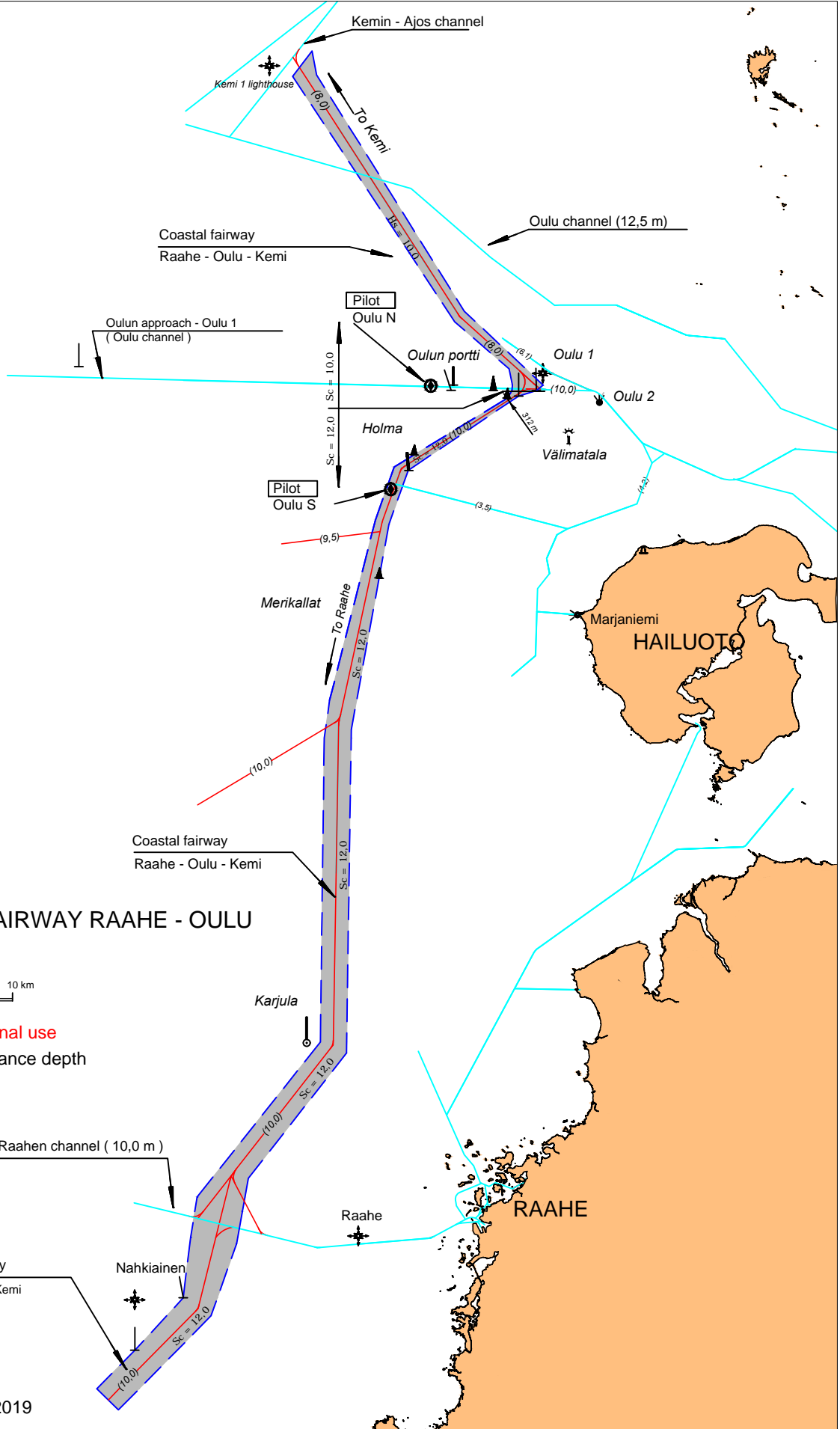
Wind gauges: Marine weather observations, Raahe Nahkiainen, Hailuoto Marjaniemi, Kemi 1 lighthouse.

Sea level: Raahe mareograph

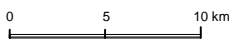
TRAFFIC SERVICE

Pilotage: e-mail pilotorder.west@finnpilot.fi. Order form www.pilotorder.fi.
Tel. +358 (0) 400 907 979, +358 (0) 29 52 53012. Pilot assistance non-mandatory.

VTS: Bothnia VTS, VHF Channel 67. Tel. +358 20 448 7356.



**COASTAL FAIRWAY RAAHE - OULU
- KEMI**



Not for navigational use
Sc = Safe clearance depth