

CHANNEL DATA

Alignment and buoyage: From the sea, W of the lighthouse Kemi 1 (another 8 m deep approach passes E of Kemi 1), W of the ramark Kemi 2 to the harbour of Ajos. Three lines, the innermost marked by boards. Cardinal marks in the approach to Ristinmatala, lateral marks from Ristinmatala to the harbour. Length is 40 km /21.6 nautical miles. Lit.

Dimensions: Design ship 30,000 dwt, L = 180 m, B = 27 m, T = 10 m. Maximum authorised draught 10 m, safe clearance depth -12.0 m in the approach, -11.5 m in the entrance and -11.4 m in the harbour basin. Minimum width 100 m (in the dredged part of the entrance). Vessel speed 11 knots from the position where the safe clearance depth alters.

Areas with meeting and overtaking prohibitions: The channel has one permanent area of meeting and overtaking prohibitions, look closer to Bothnia VTS Masters´Guide

<https://tmfg.fi/en/vts/masters-guide>

Anchorage and other special areas: There is an area for anchoring and overtaking in the approach, between Kemi 1 and Ristinmatala. Another area for anchoring and overtaking is situated in the entrance at Inakari, on the W side of the channel, about 2 km before harbour, depth 15-17 m, sand seabed, cardinal marks, unsheltered from sea winds.

NAVIGABILITY

Navigational conditions: After Hebe the channel narrows to 150 m and the rest of the channel is dredged, its width being 100 m. Strong winds and heavy seas may impede navigation between Hebe and the harbour; heavy sea state all the way to the harbour.

Ice conditions: In early winter the ice is in movement in the whole channel and buoys and spar buoys may be pressed under ice (surface). Between Kemi 1 and Kemi 2 heavy ice ridges difficult to force. In mid-winter 50-80 cm thick fast ice about 10-20 km off Ajos.

RECOMMENDATIONS (NB. Only applicable to the ice-free season.)

Wind: Critical wind forces for the design ship 15 m/s between Ristinmatala and Inakari, direction NE-S-NW; 10 m/s between Inakari and the harbour, direction NE-S-NW.

Towing assistance: Ships without advanced manoeuvring characteristics should employ tugs in the harbour if wind speed exceeds 10 m/s.

Wind gauges: Marine weather observations, Kemi 1 lighthouse.

Sea level: Kemi mareograph

TRAFFIC SERVICE

Pilotage: E-mail: pilotorder.west@finnpilot.fi. Order form www.pilotorder.fi. Tel. +358 (0) 400 907 979, fax +358 (0) 29 52 53012. Pilot boarding position Kemi S: 65°29,28' N, 24°19,02' E. Pilotage distance 10,8 nautical miles (20 km). NB. Boarding position to be agreed upon in winter and in difficult weather conditions. VTS: Bothnia VTS, VHF Channel 67. Tel. +358 204 48 7356.

Tugs: Arctia Karhu Ltd, e-mail: towing@arctia.fi tugs, Ahto 3600 kw, Jääsalo, 2 x 1294 kW, and Ulla, 883 kW. To be ordered from Kemi, tel. +358 400 392904 and +358 400 442904.

PORT

Quays: *Oil terminal: safe clearance depth -10.8 m.*
Quay I, berths 1-2: length 160 m, safe clearance depth -10.8 m, berths 3-4: length 179 m, depth -8.7 m.
Quay II, berths 5-7: length 292 m, depth -8.7 m.
Quay III, berths 8-9: length 178 m, safe clearance depth -11.4 m.
Quay IV, berths 10-11: length 178 m, safe clearance depth -11.4 m.

Cargo handling: Mobile cranes, 6-100 t, on all quays. Quays 1, 2, 3 and 4: ro-ro berths.

Harbour basins: Diameter 350 m, use of anchor permitted. Use of anchor prohibited 10 m from quay.

Contact Information:

Kemi Port Ltd.

technical manager Jari Heikkilä

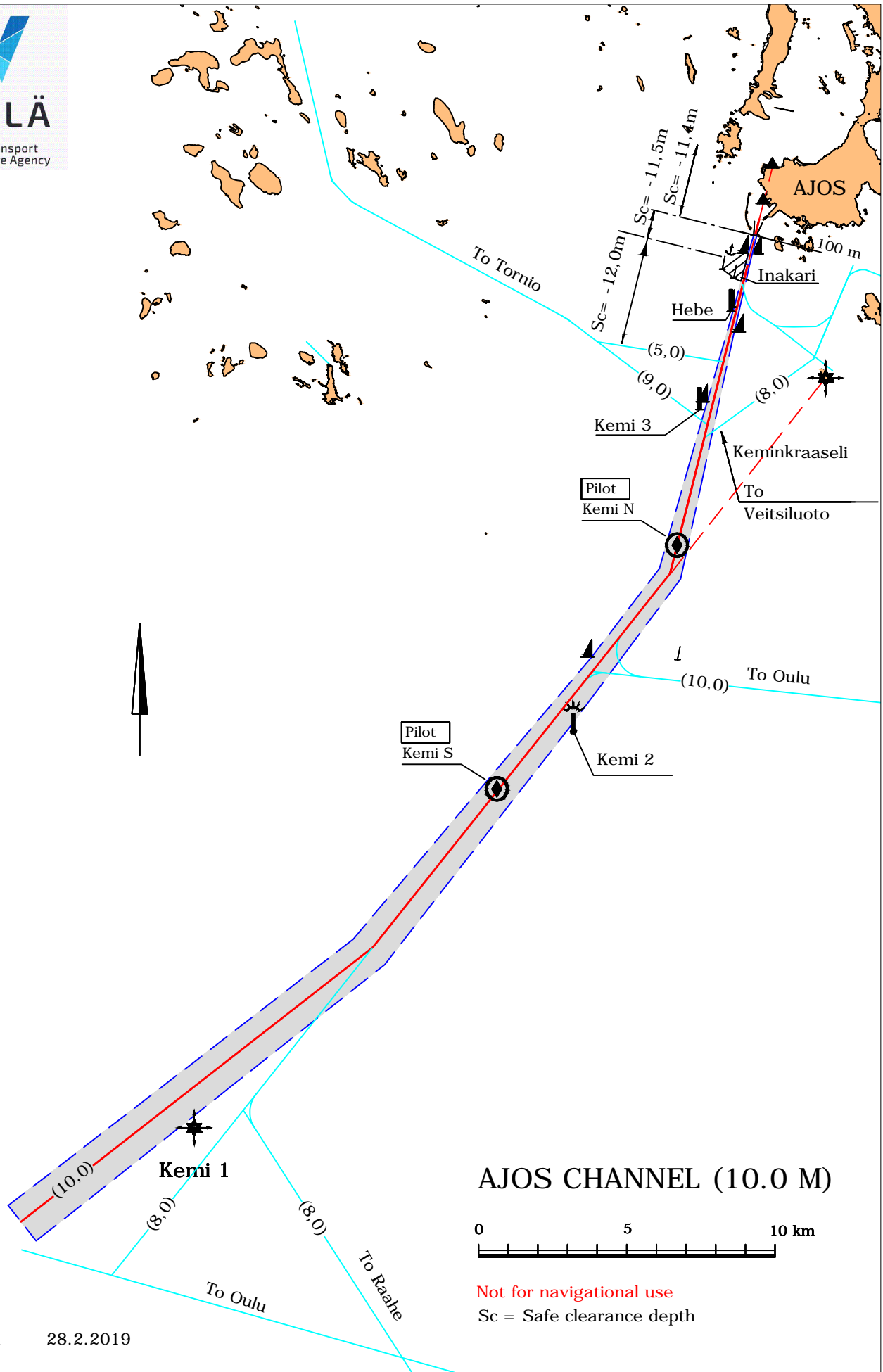
Linemen

tel. +358 16 258 100

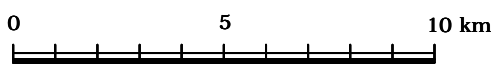
mobile. +358 (0) 40 545 6462

tel. +358 16 258 108

mobile +358 40 548 2065

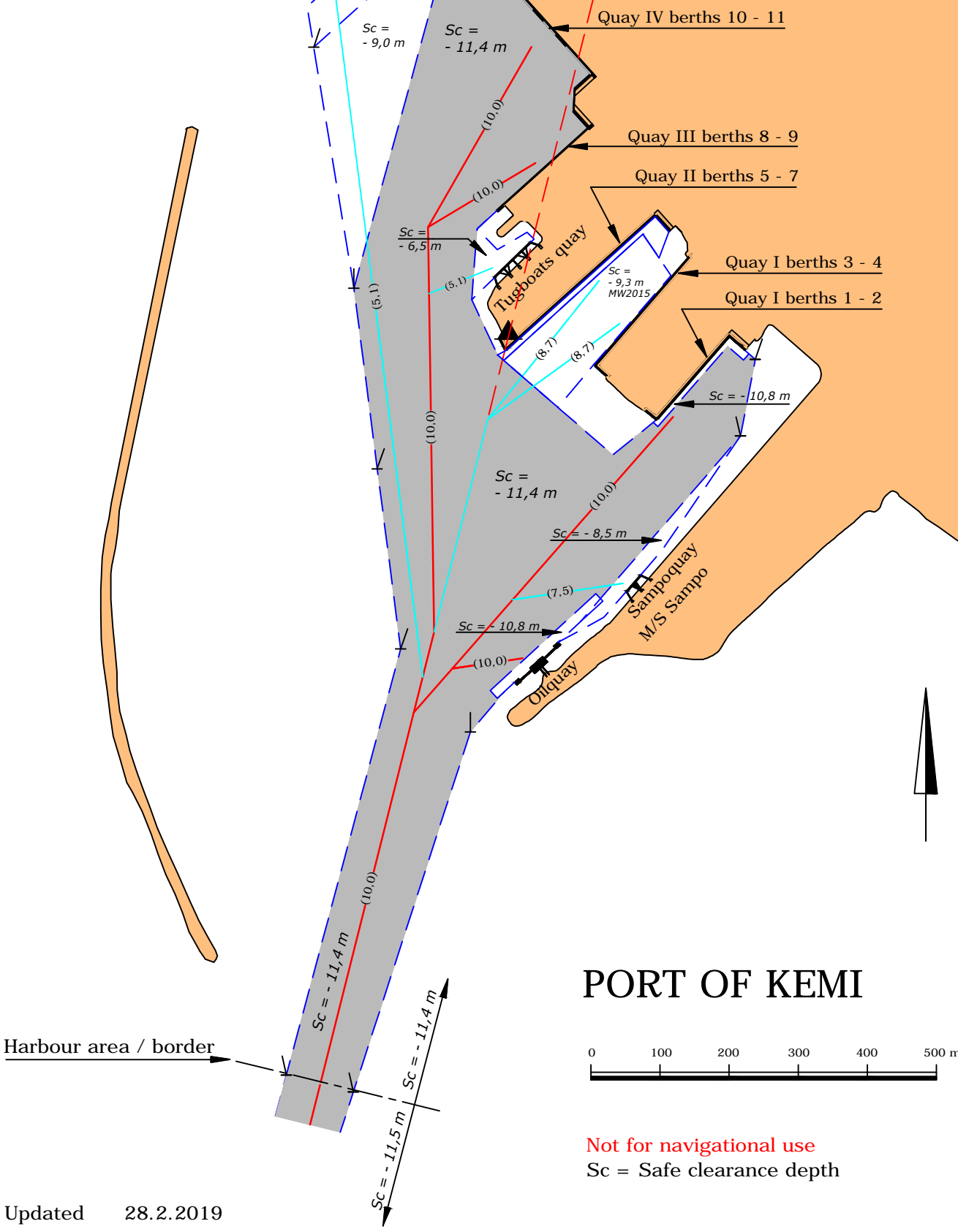


AJOS CHANNEL (10.0 M)

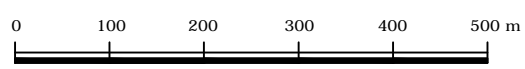


Not for navigational use
Sc = Safe clearance depth

AJOS



PORT OF KEMI



Not for navigational use
Sc = Safe clearance depth