




AUROLA
SUMMIT

OLOS
16.-17.1.2018



AURORA NETWORK



AURORA
SUMMIT

aurora



TESTING:

CONNECTED AND
AUTOMATED
VEHICLES

DIGITAL
TRANSPORT
INFRASTRUCTURE

INTELLIGENT
INFRASTRUCTURE
ASSET
MANAGEMENT

INTELLIGENT CORRIDOR E8

TESTING ON PUBLIC ROADS

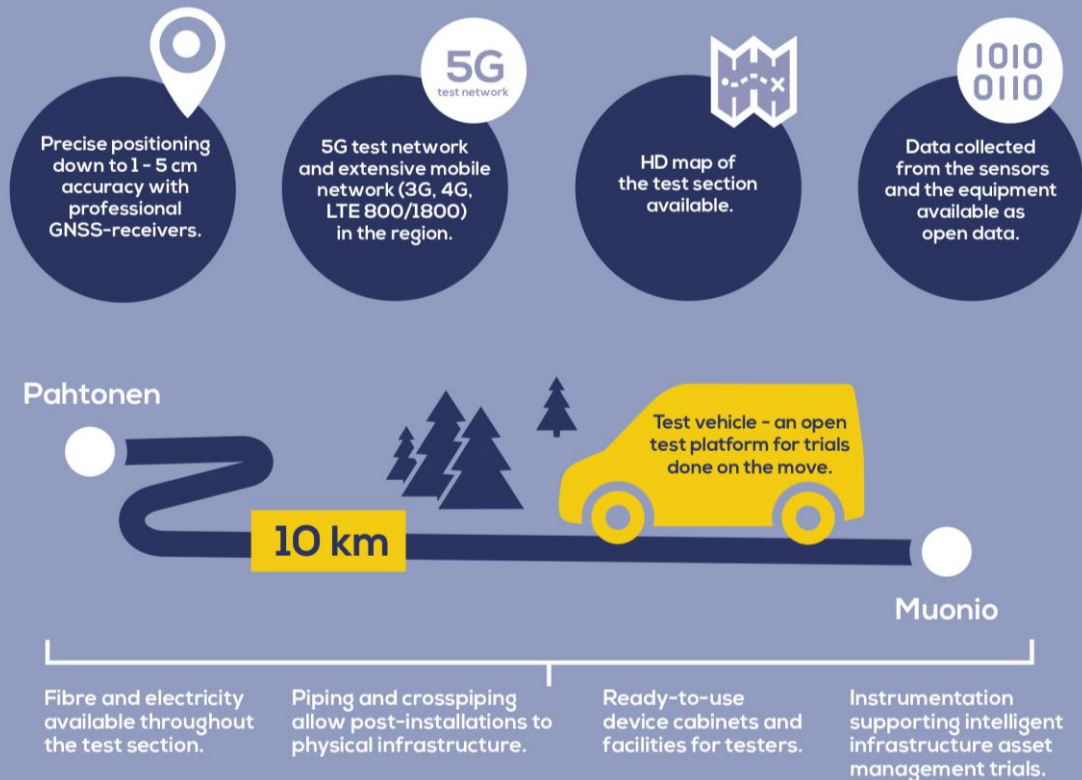
REGIONAL COOPERATION

ARCTIC CONDITIONS

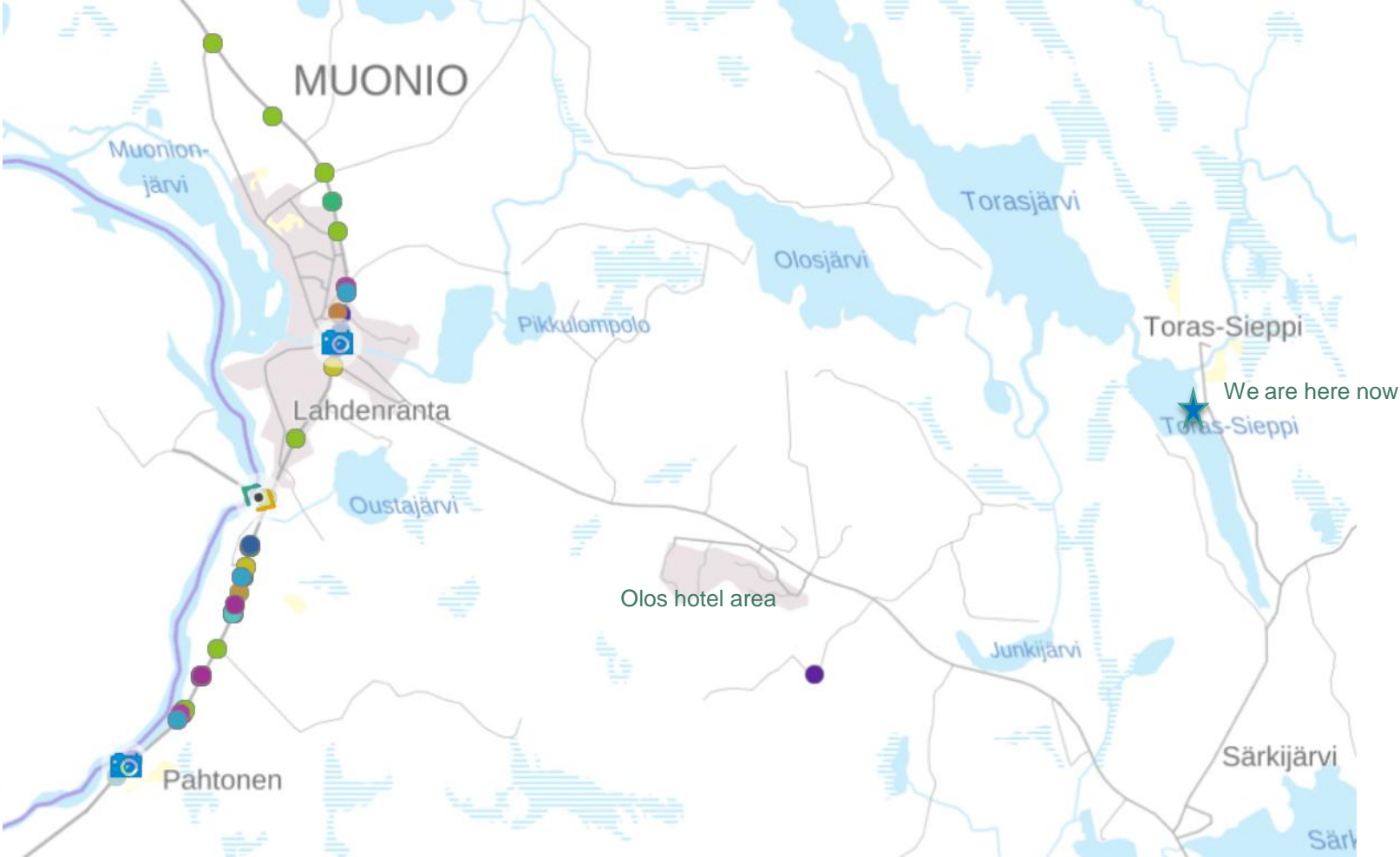
Public test section supports connected and automated driving trials in road traffic.



Testers can utilize a 10 km long test section on the main road E8. The physical infrastructure of the test section is equipped to support test activities and extensive information services are available for test use. In addition, a test vehicle can be used for trials done on the move.



Aurora test road and instrumentation spots



E8 - the Aurora Borealis Corridor

European digital cross-border corridor for CAD testing

