



Hydrographic survey program 2015-2020

Finnish Transport Agency, public 28 August 2015



Principles in Finland, part I

- All hydrographic surveys will be procured, based on EU and Finnish national procurement legislation, IHO S-44 ed. 5 and FSIS-44 (national realisation of S-44). Priorities:
 1. Commercial shipping routes;
 2. Other commercial and official use;
 3. Chart publishing program;
 4. Pleasure boating and fishing;
- Hydrographic survey field work season typically April – November (when ice does not prevent the field survey work);
- A first notice is published each fall, typically in October. Invitation to tender notices are published in Q1 for major works;
 - Annual/multiannual contracts with one service provider for each procurement;
 - Volume estimated ~4 M€ annually;





Principles in Finland, part II, territorial waters

- Hydrographic surveys within Finnish territorial waters need a permission. The competent authority is Finnish Defence Command;
- Hydrographic data in survey scale is **considered classified** and the data security status varies depending on the size of an area and location;
- Classified hydrographic data may not leave Finnish territory;
- Invitation to tender process is complex as facility security clearance is requested before a service contract is signed;

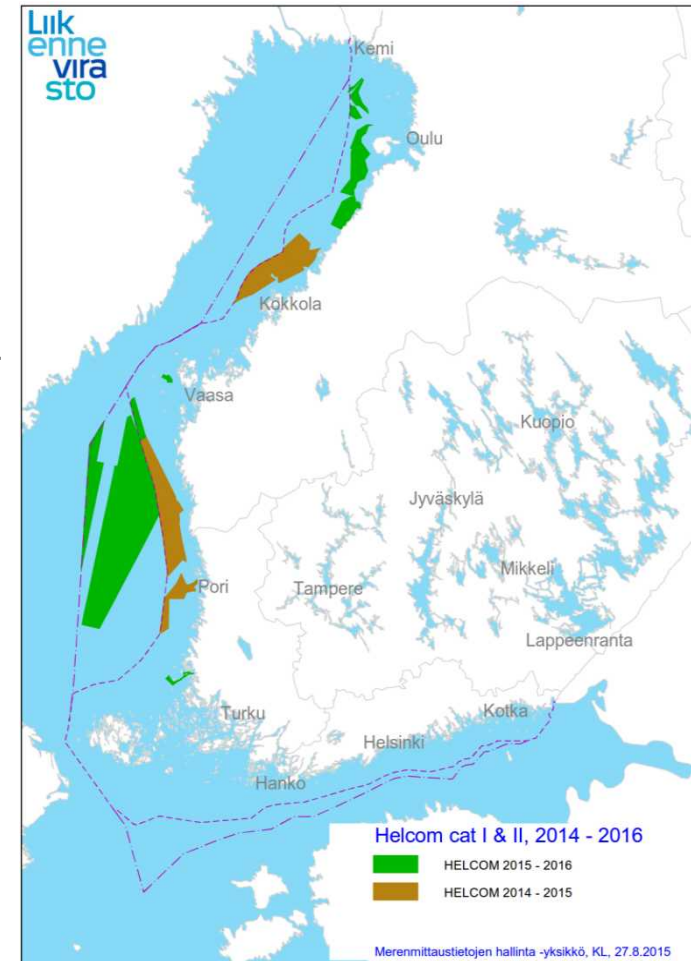




Hydrographic field work – in progress 2015

Commercial shipping areas (HELCOM cat I & II, > 10m)

1. **BBROK2015** Bay of Bothnia areal surveys, territorial waters (2015-16)
 - Clinton Mätkonsult Ab, Sweden (9.6.2015 ->)
 - about 1.200 km², Security Clearance Status IV (=restricted)
2. **BSEEZ2015** Bothnian Sea EEZ, areal surveys (2015-16)
 - Meritaito Oy (commenced 31.3.2015)
 - about 7.200 km², public
3. Shipping fairway surveys (planned & progress)
 - Approaches to Vaasa (Meritaito Oy, option completed 13.5.2015)
 - Uusikaupunki fairway (Meritaito Oy, option completed 6.7.2015)
 - Rauma fairway
 - Vuosaari fairway



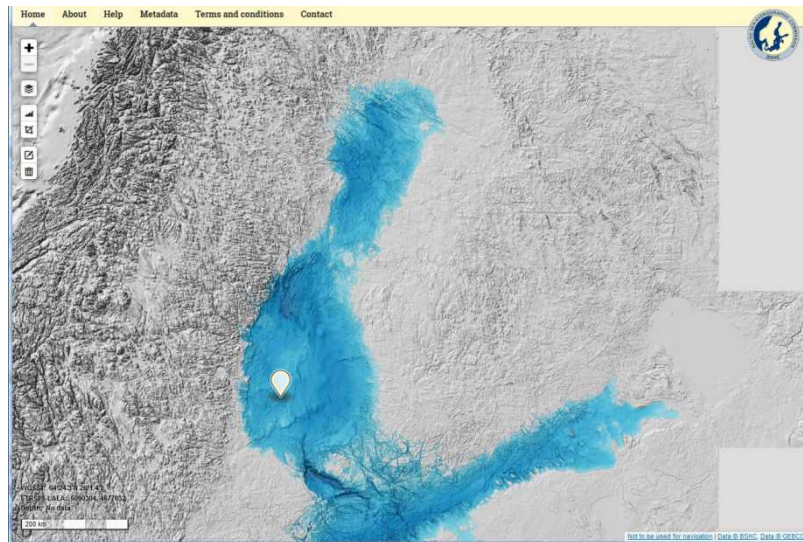
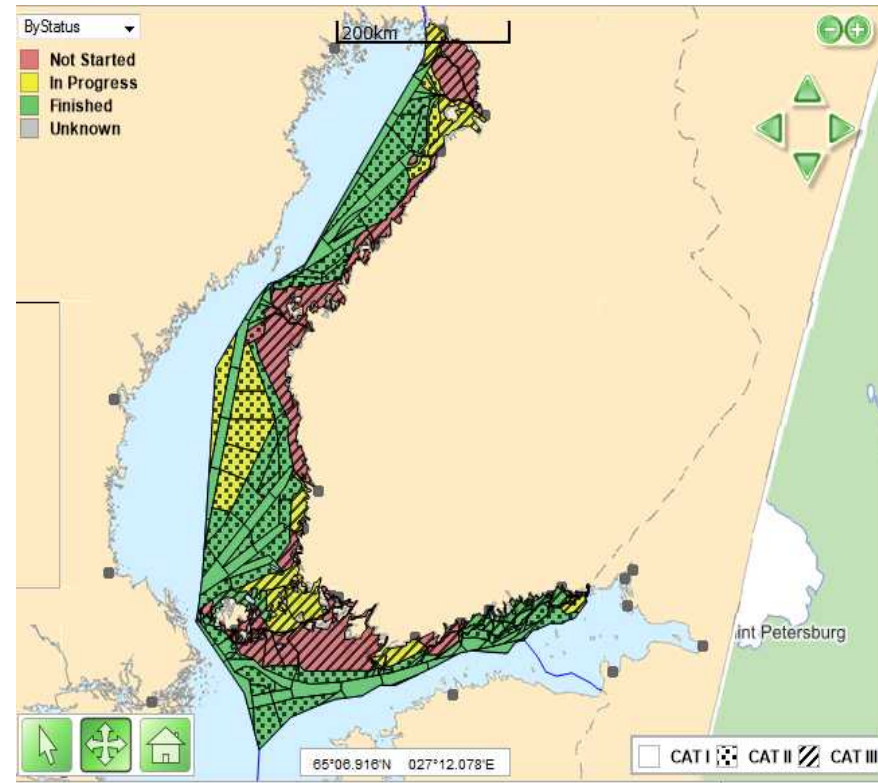
Co-financed by the European Union
Trans-European Transport Network (TEN-T)



Hydrographic field work – HELCOM CAT I&II

Full coverage and up to date hydrographic surveys covering the open sea commercial shipping areas (> 10m and shipping fairways) will be done 2017. Now few areas are still in yellow (ongoing).

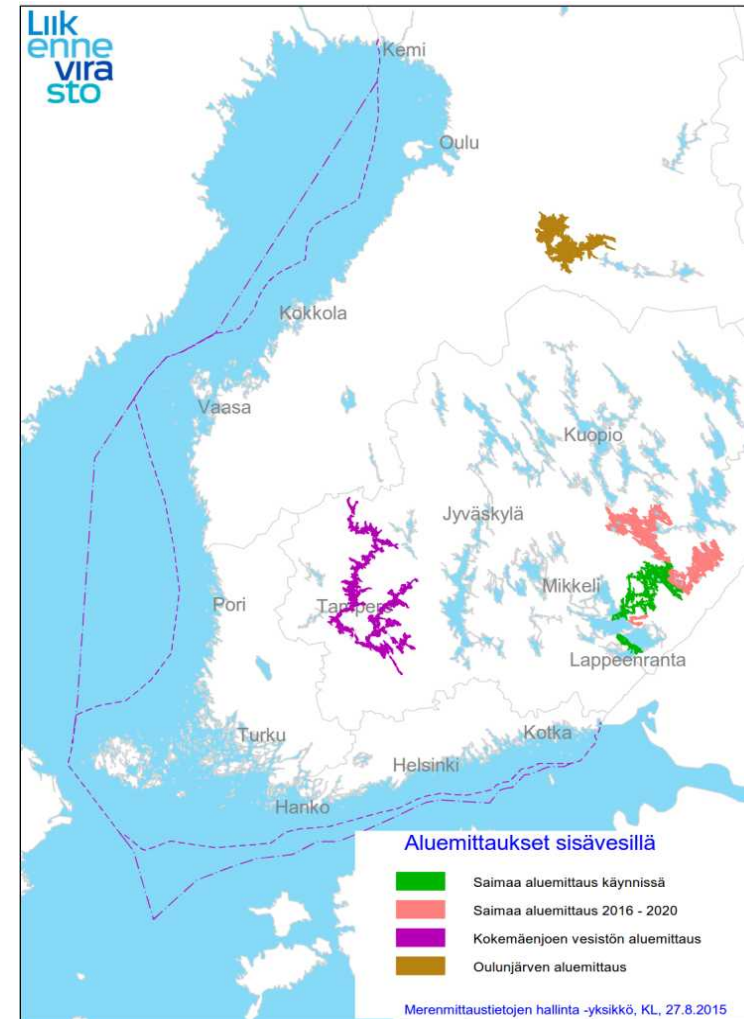
- > ENC and paper charts updated;
- > Baltic Sea Bathymetric Database updated (<http://data.bshc.pro/#>)





Hydrographic field work – in progress 2015

- Inland waters (Lake Saimaa: Suur-Saimaa Sulkava, 2015-16)
 - Suur-Saimaa – Sulkava (Meritaito Oy commenced 25.5.2015)
 - Multibeam surveys
 - Single beam surveys
 - Fairway surveys
 - public

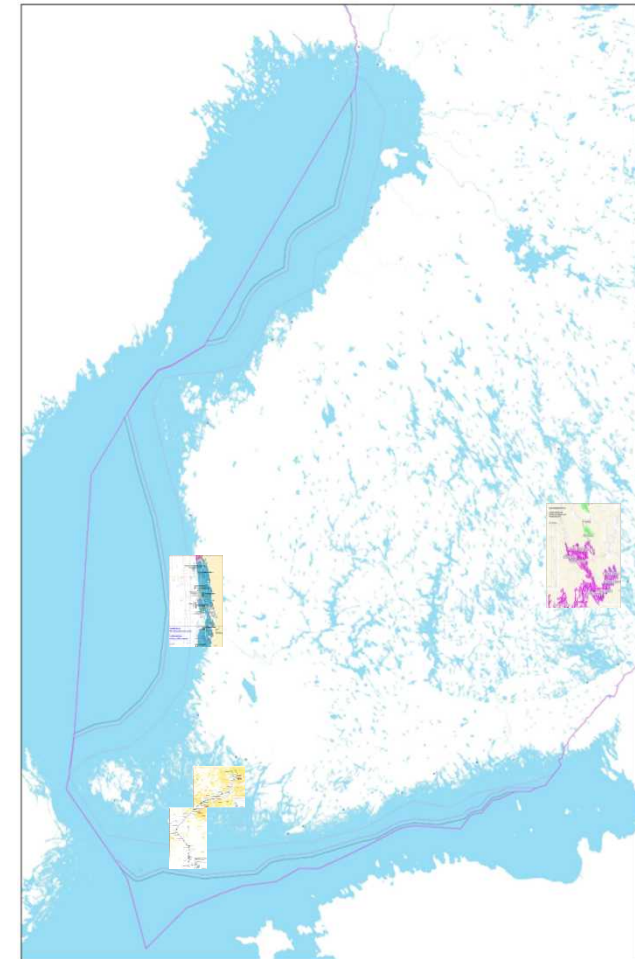




Hydrographic survey work – planned 2016-2020

Planned hydrographic survey work for 2016-2020

- **Areal surveys** in the Bothnian Sea, depth range 10 m – 3 m;
 - IHO S-44 ed 5 order 1a (in some areas with relaxed coverage);
 - **Security clearance needed;**
- Shipping fairway surveys, based on maintenance needs:
 - Pietarsaari Fairway;
 - Vuosaari Fairway
 - Utö – Naantali Fairway;
 - **Security clearance needed;**
- **Areal surveys** in inland waters (Lake Saimaa: Sulkava -> Varkaus & Kesälahti)
 - Sulkava -> (~French type procurement: fixed sum, request for area)
 - public

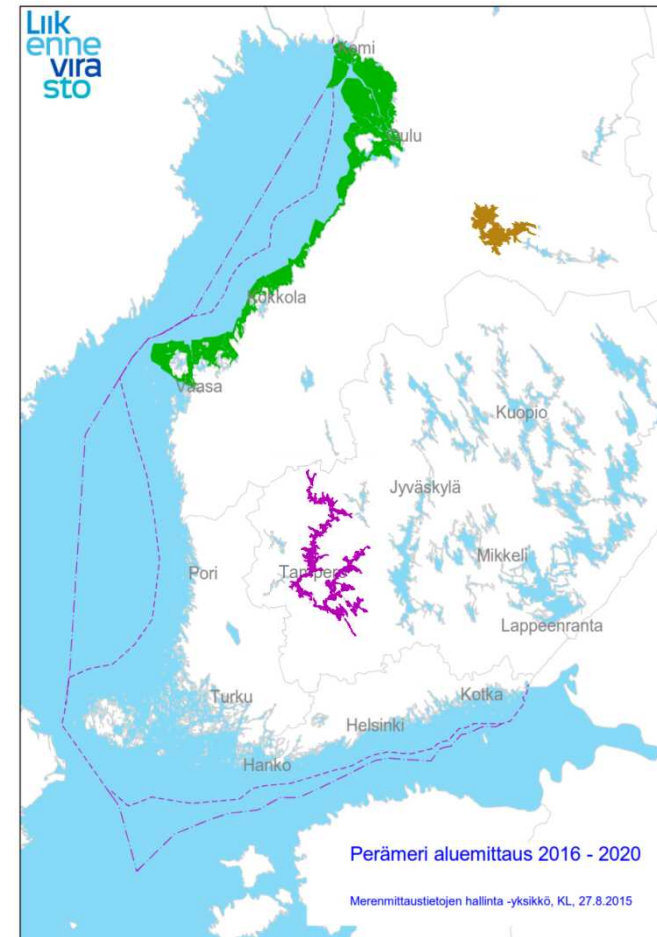




Hydrographic survey work – planned 2016-2020

Planned hydrographic survey work for 2016-2020

- **Areal surveys** on the coast of the Bay of Bothnia;
 - Depth range 10m – shoreline + 3 m topo contour;
 - S-44 ed 5 order 1a (with relaxed coverage in some areas) , LIDAR combination possible;
 - One responsible service provider;
 - **Security clearance needed;**
- Inland waters
 - **Näsijärvi, Pyhäjärvi and further;**
 - Or alternatively **Oulujärvi**
 - S-44 ed 5 order 1a (with relaxed coverage in some areas), LIDAR combination possible;
 - public

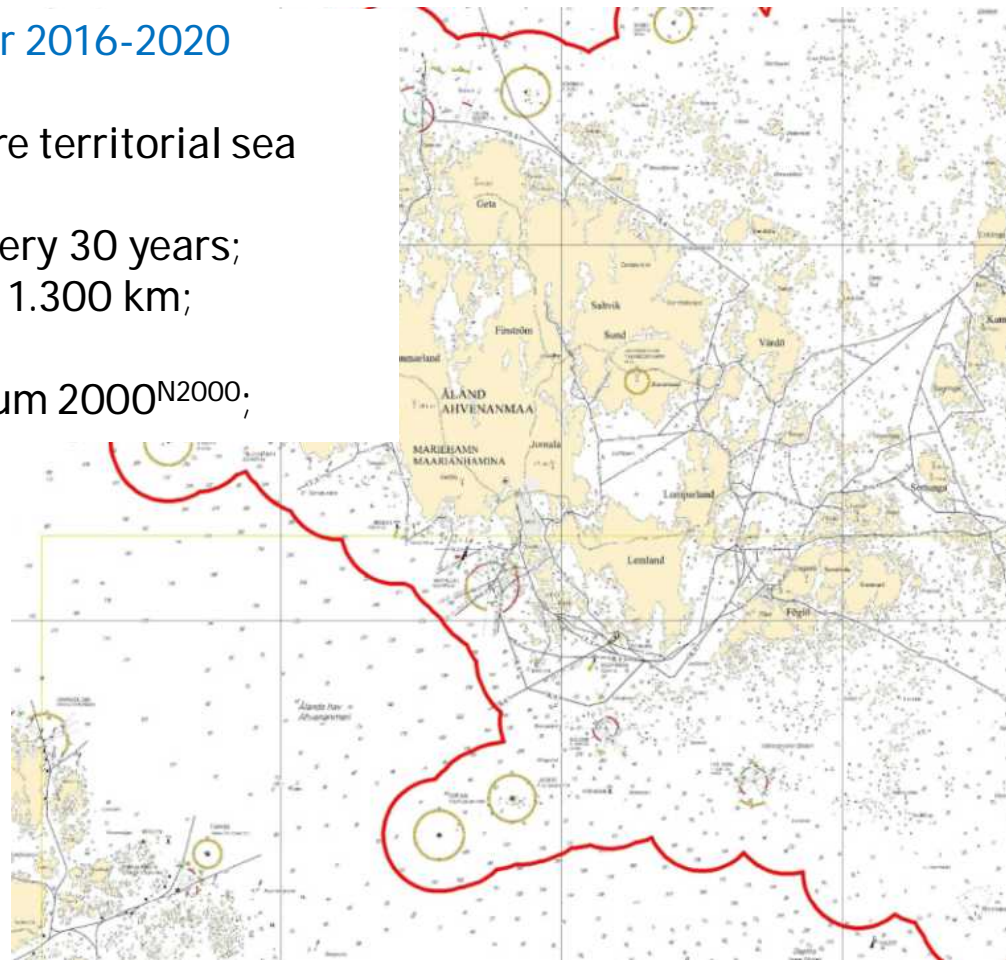




Hydrographic survey work – planned 2016-2020

Planned hydrographic survey work for 2016-2020

- Basepoint re-surveys for the entire territorial sea limit determination started;
 - Basepoint verification on every 30 years;
 - Territorial sea limit is about 1.300 km;
 - Outmost surface shoals;
 - Tie to Baltic Sea Chart Datum 2000^{N2000};





Hydrographic survey work – closing remarks

- Public procurement:
 - www.liikennevirasto.fi/hankinnat and respective folder;
 - EU Tenders Electronic Daily (TED);
- Contact:
 - Finnish Transport Agency / Hydrographic Survey Data Management
 - merenmittaus@fta.fi (common mailbox)
 - Seppo H Mäkinen [seppo.h.makinen@fta.fi tel: +358 295 343420]



Co-financed by the European Union
Trans-European Transport Network (TEN-T)